

- NOTES:**
- SANITARY SEWER SERVICE LATERALS AND DRAINAGE STRUCTURE LATERALS SHALL BE CONNECTED TO THE ASSOCIATED SEWER AT MANHOLE STRUCTURES, OR AT WYE OR TEE CONNECTIONS. THE EXACT LOCATION OF EACH SEWER SERVICE LATERAL SHALL BE CONFIRMED IN THE FIELD.
 - SANITARY SEWER SERVICES TO BE 6" SDR 26 PVC WITH A 1.00% MINIMUM SLOPE UNLESS OTHERWISE NOTED.
 - SEWER LENGTHS LISTED CENTER OF STRUCTURE TO CENTER OF STRUCTURE. SEWER SLOPES CALCULATED FROM CENTER OF STRUCTURE TO CENTER OF STRUCTURE.
 - TRENCH BACKFILL REQUIRED UNDER ALL AND WITHIN 2' OF ALL PAVED SURFACES.

REVISIONS	
NAME	DATE
PER IDOT	01-04-10

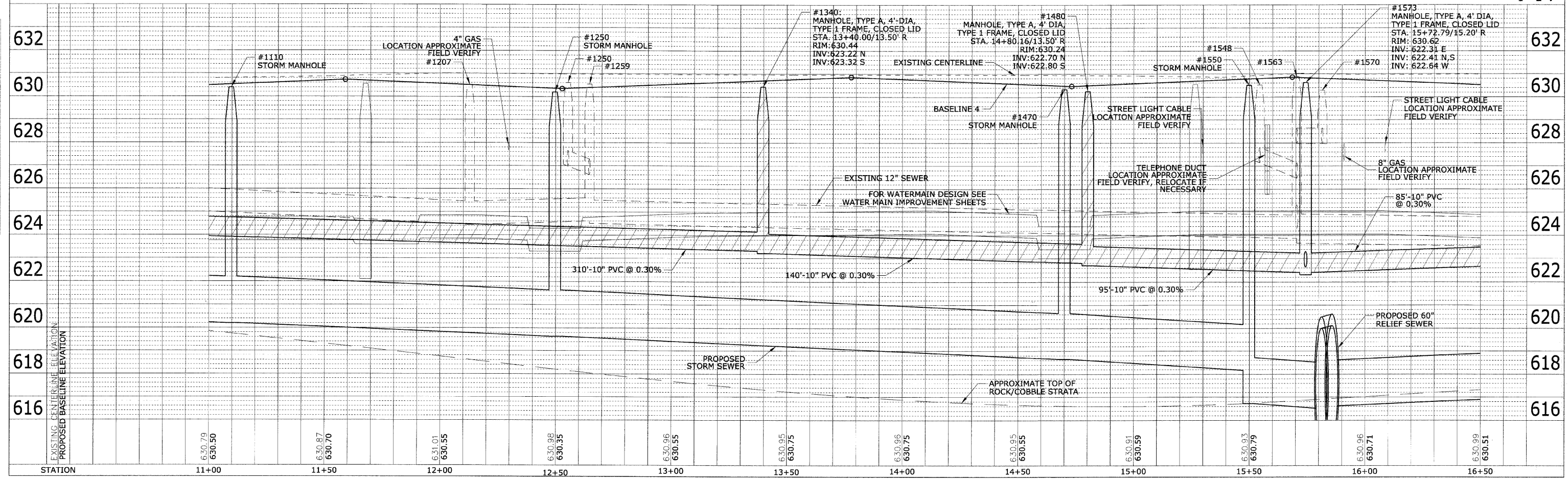
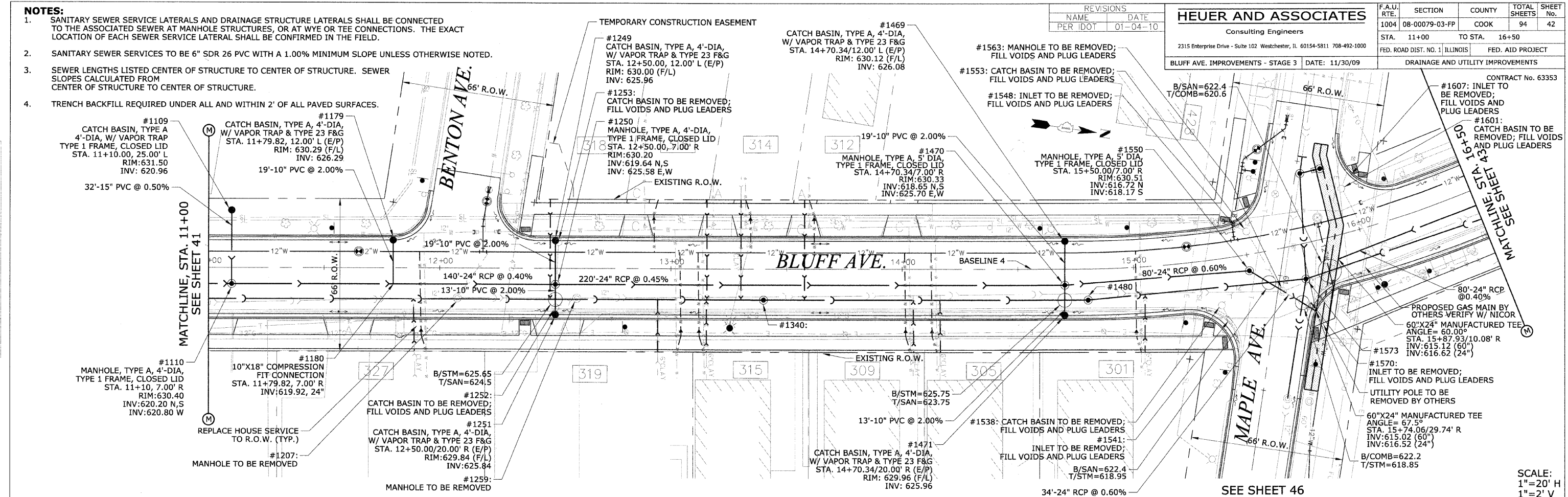
HEUER AND ASSOCIATES
 Consulting Engineers
 2315 Enterprise Drive - Suite 102 Westchester, IL 60154-5811 708-492-1000
 BLUFF AVE. IMPROVEMENTS - STAGE 3 DATE: 11/30/09

F.A.U. RTE.	SECTION	COUNTY	TOTAL SHEETS	SHEET No.
1004	08-00079-03-FP	COOK	94	42
STA. 11+00	TO STA. 16+50			
FED. ROAD DIST. NO. 1	ILLINOIS	FED. AID PROJECT		
DRAINAGE AND UTILITY IMPROVEMENTS				

CONTRACT No. 63353

PLAN	DATE	BY	DATE
SURVEYED			
GRADES CHECKED			
ALIGNMENT CHECKED			
PT. OF WAY CHECKED			
NO. OF FILE NAME			

PROFILE	DATE	BY	DATE
SURVEYED			
GRADES CHECKED			
STRUCTURE NOTATIONS OK'D			



SCALE: 1"=20' H
1"=2' V