

HEUER AND ASSOCIATES

Consulting Engineers

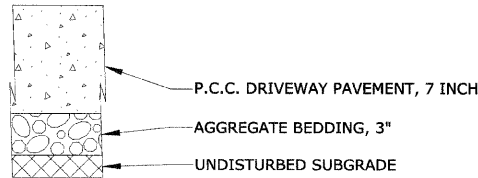
2315 Enterprise Drive - Suite 102 Westchester, IL 60154-5811 708-492-1000

F.A.U. RTE. 1004	SECTION 08-00079-03-FP	COUNTY COOK	TOTAL SHEETS 94	SHEET No. 82
STA.		TO STA.		
FED. ROAD DIST. NO. 1		ILLINOIS	FED. AID PROJECT	

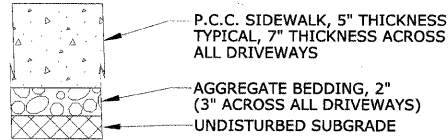
CONTRACT No. 63353

DATE	BY	REVISION

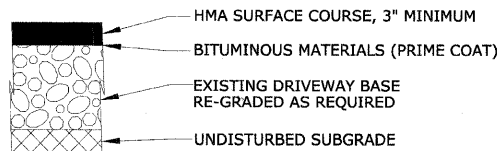
DATE	BY	REVISION



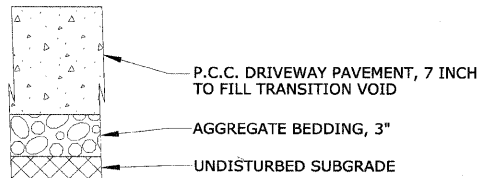
P.C.C. DRIVEWAY



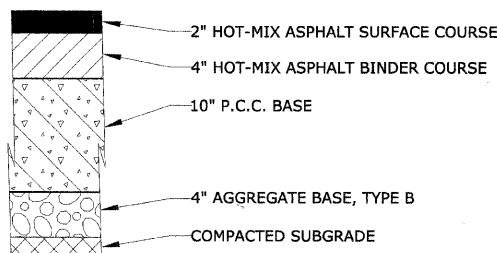
P.C.C. SIDEWALK



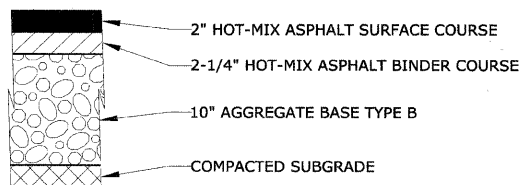
BITUMINOUS DRIVEWAY TRANSITION (CLASS D PATCH, 3" MINIMUM THICKNESS)



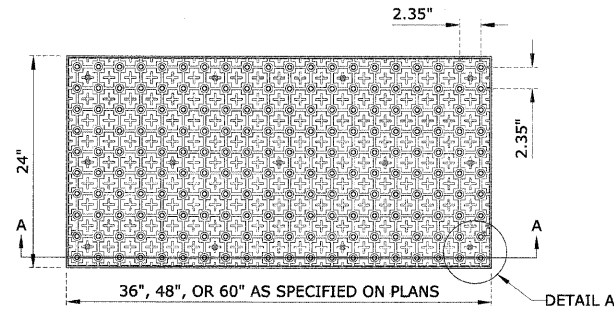
P.C.C. DRIVEWAY TRANSITION (CLASS C PATCH, 7" MINIMUM THICKNESS)



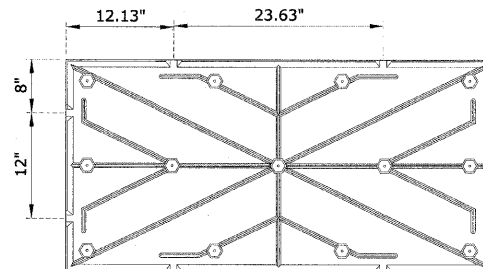
CLASS B PATCH



CLASS D PATCH



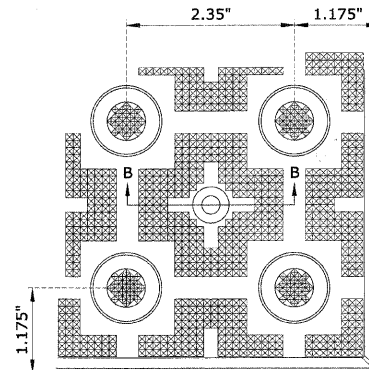
PLAN VIEW



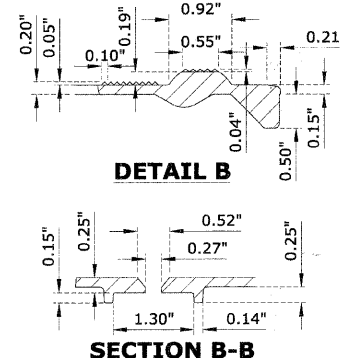
UNDERSIDE VIEW



SECTION A-A



DETAIL A

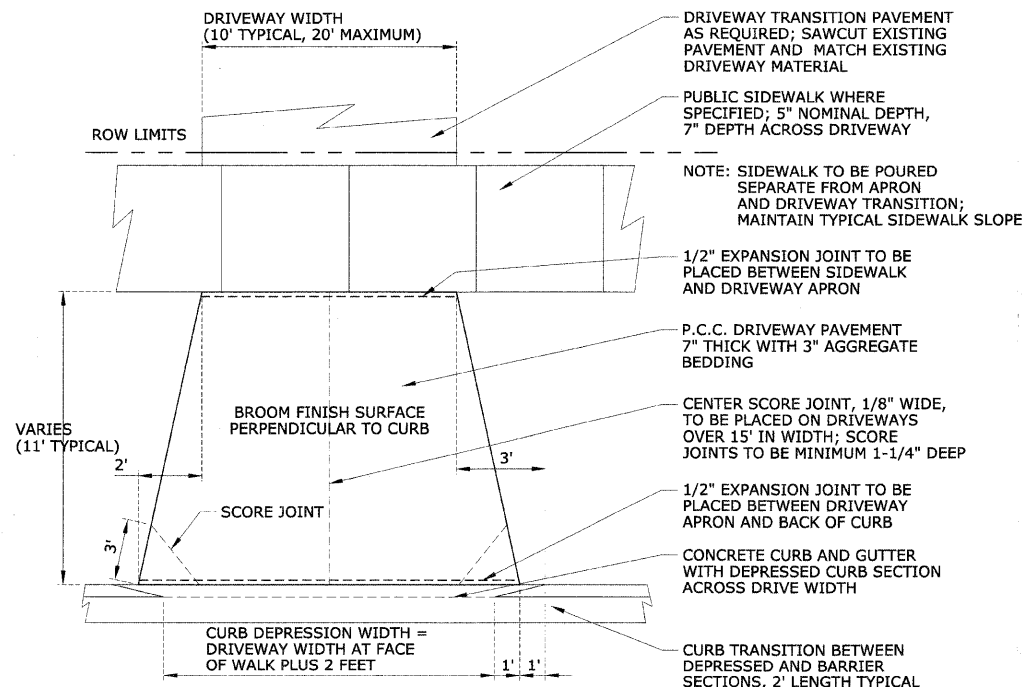


DETAIL B

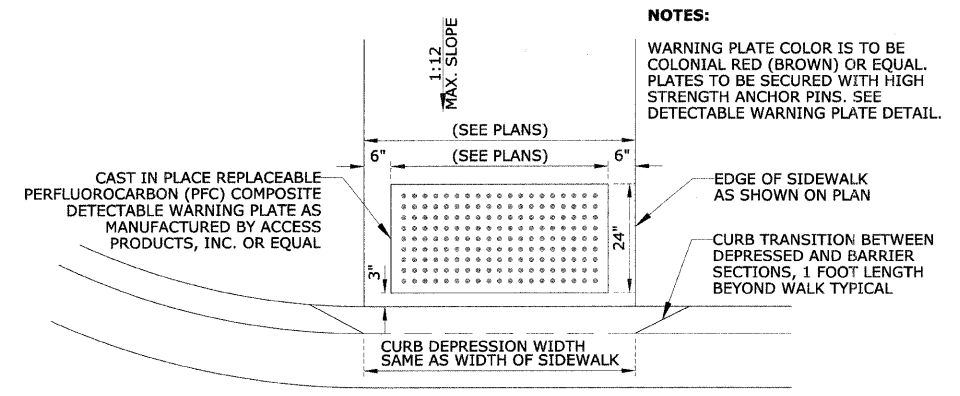
SECTION B-B

NOTES:
ALL WARNING PLATES TO BE SIZED ACCORDING TO PLAN SHEETS.
STANDARD COLOR TO BE COLONIAL RED (BROWN); (FED 20109).

CAST IN PLACE REPLACEABLE DETECTABLE WARNING PLATE

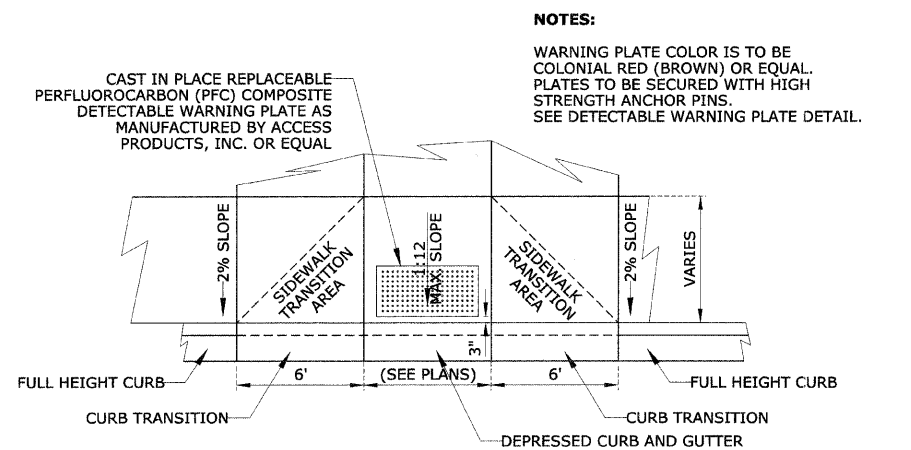


CURB DEPRESSION DETAIL
RESIDENTIAL P.C.C. DRIVEWAY APRON DETAIL



HANDICAP RAMPED SIDEWALK PERPENDICULAR CONFIGURATION

NOTES:
WARNING PLATE COLOR IS TO BE COLONIAL RED (BROWN) OR EQUAL. PLATES TO BE SECURED WITH HIGH STRENGTH ANCHOR PINS. SEE DETECTABLE WARNING PLATE DETAIL.



HANDICAP RAMPED SIDEWALK PARALLEL CONFIGURATION

NOTES:
WARNING PLATE COLOR IS TO BE COLONIAL RED (BROWN) OR EQUAL. PLATES TO BE SECURED WITH HIGH STRENGTH ANCHOR PINS. SEE DETECTABLE WARNING PLATE DETAIL.

REVISIONS	
NAME	DATE
PER IDOT	01-04-10

ILLINOIS DEPARTMENT OF TRANSPORTATION
**BLUFF AVENUE IMPROVEMENTS
STAGE 3**

CONSTRUCTION DETAILS - SPECIAL

SCALE: NTS
DATE 11/30/2009

DRAWN BY H&A
CHECKED BY JRH