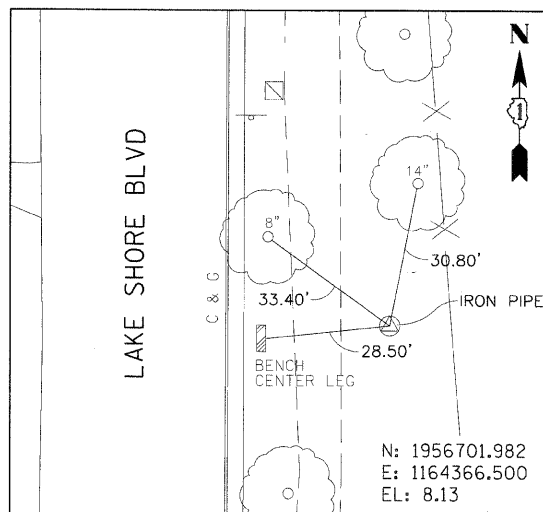
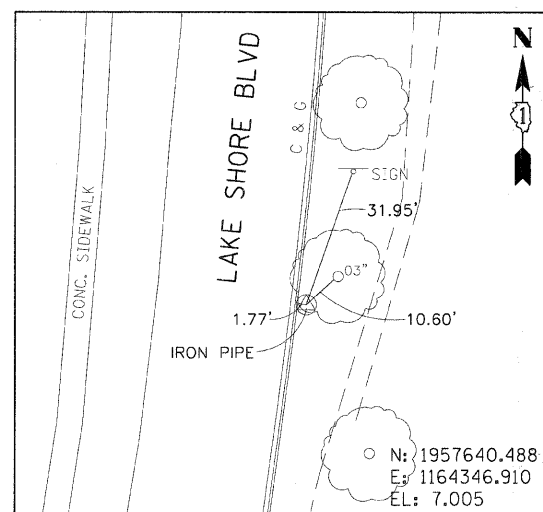


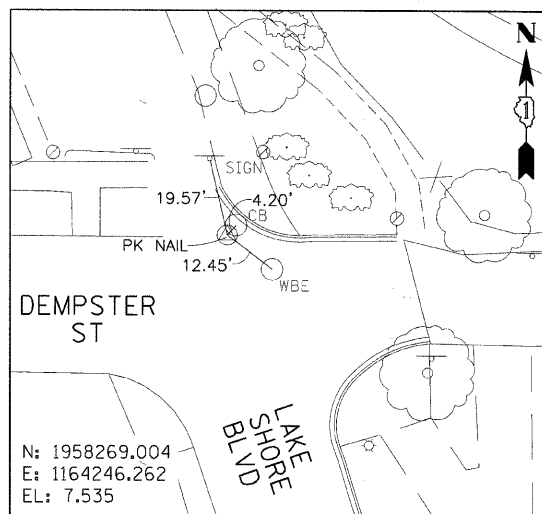
CONTROL POINT 1



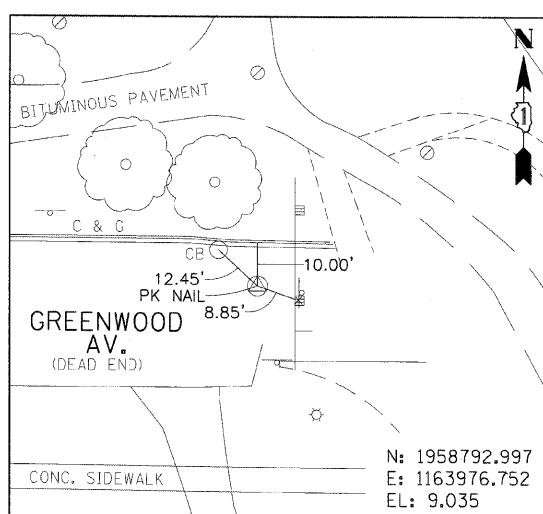
CONTROL POINT 2



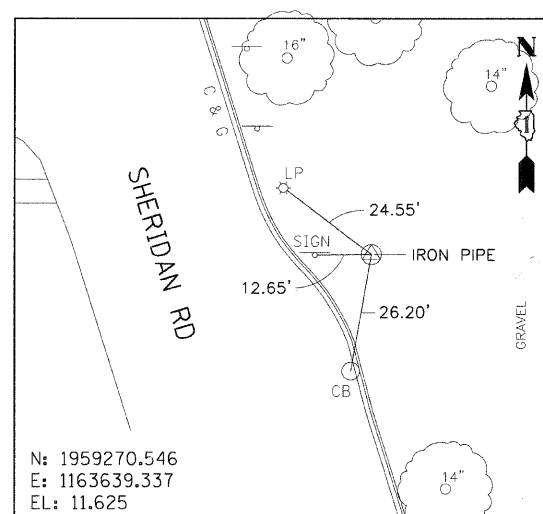
CONTROL POINT 3



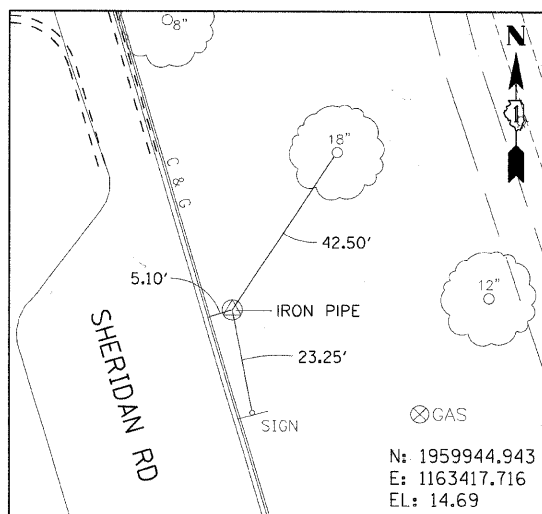
CONTROL POINT 4



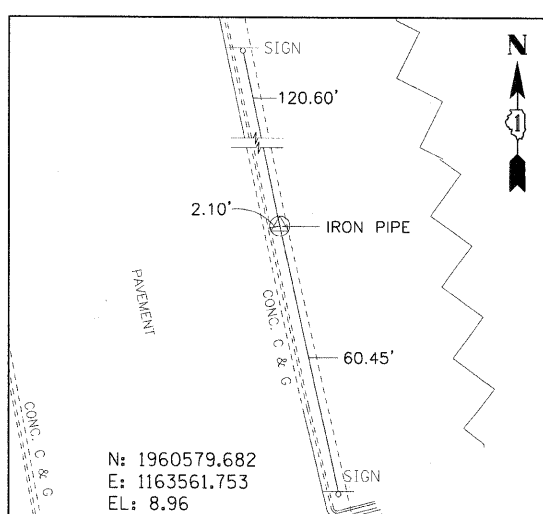
CONTROL POINT 5



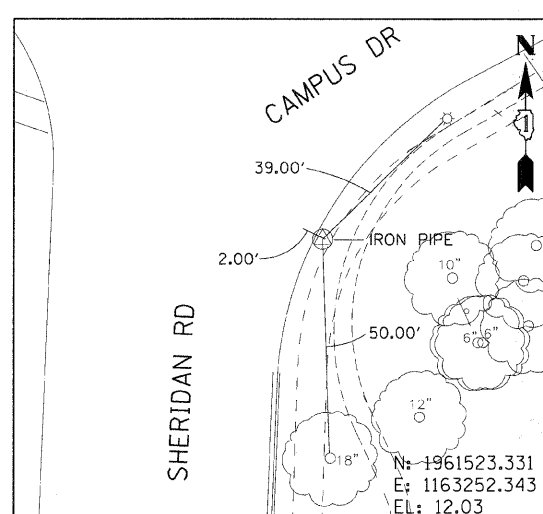
CONTROL POINT 6



CONTROL POINT 7



CONTROL POINT 8



CONTROL POINT 9

BENCH MARK NO. 42
ELEVATION: 16.254

LOCATION:
NORTH EAST CORNER OF DAVIS ST. AND FORREST PL.

DESCRIPTION:
ABOUT 1' NORTH OF SIDEWALK AND 1' EAST BACK OF CURB.

BENCH MARK NO. 47
ELEVATION: 9.739

LOCATION:
NORTH EAST CORNER OF KEDZIE ST. AND SHERIDAN RD.

DESCRIPTION:
ABOUT 1' NORTH AND 1' EAST BACK OF SIDEWALK.

TEMPORARY BENCH MARK NO. 1
ELEVATION: 10.32

CHISELED SQUARE ON THE EAST SIDE OF FIRST LIGHT POLE ON THE NORTH-WEST CORNER OF LEE ST. AND LAKE SHORE BLVD. "CONC. FOUNDATION"

TEMPORARY BENCH MARK NO. 2
ELEVATION: 7.08

CHISELED SQUARE ON THE EAST SIDE OF LIGHT POLE FOUNDATION ON THE NORTH-WEST SIDE OF HAMILTON ST. AND LAKE SHORE BLVD.

TEMPORARY BENCH MARK NO. 3
ELEVATION: 13.465

CHISELED SQUARE ON THE EAST SIDE OF LIGHT POLE CONCRETE FOUNDATION ON THE SOUTH-WEST CORNER OF DAVIS ST. AND LAKE SHORE BLVD.

TEMPORARY BENCH MARK NO. 4
ELEVATION: 12.375

SOUTH-EAST CORNER OF SHERIDAN RD. AND ENTRANCE TO NORTH WESTERN UNIVERSITY CHISELED SQUARE ON THE EAST SIDE OF LIGHT POLE FOUNDATION "SOUTH OF INTERSECTION"

12/01/2009 \\lucy\p01\p0201\p060099576\300_cad\301\301\c\as\rgs\sheet\100_018\1807-sht-ATB-02.dgn



USER NAME = ozonykab	DESIGNED - BMC	REVISED -
PLOT SCALE =	DRAWN - LM	REVISED -
PLOT DATE = 12/01/2009	CHECKED - SLW	REVISED -
	DATE - 12/01/2009	REVISED -

STATE OF ILLINOIS
DEPARTMENT OF TRANSPORTATION

BENCH MARKS AND CONTROL POINTS

SCALE: NONE SHEET NO. OF SHEETS STA. TO STA.

F.A. RTE.	SECTION	COUNTY	TOTAL SHEETS	SHEET NO.
	07-00246-00-BT	COOK	81	10
ITEP NO. 102121			CONTRACT NO. 63423	
FED. ROAD DIST. NO.		ILLINOIS FED. AID PROJECT		

C-91-338-07