

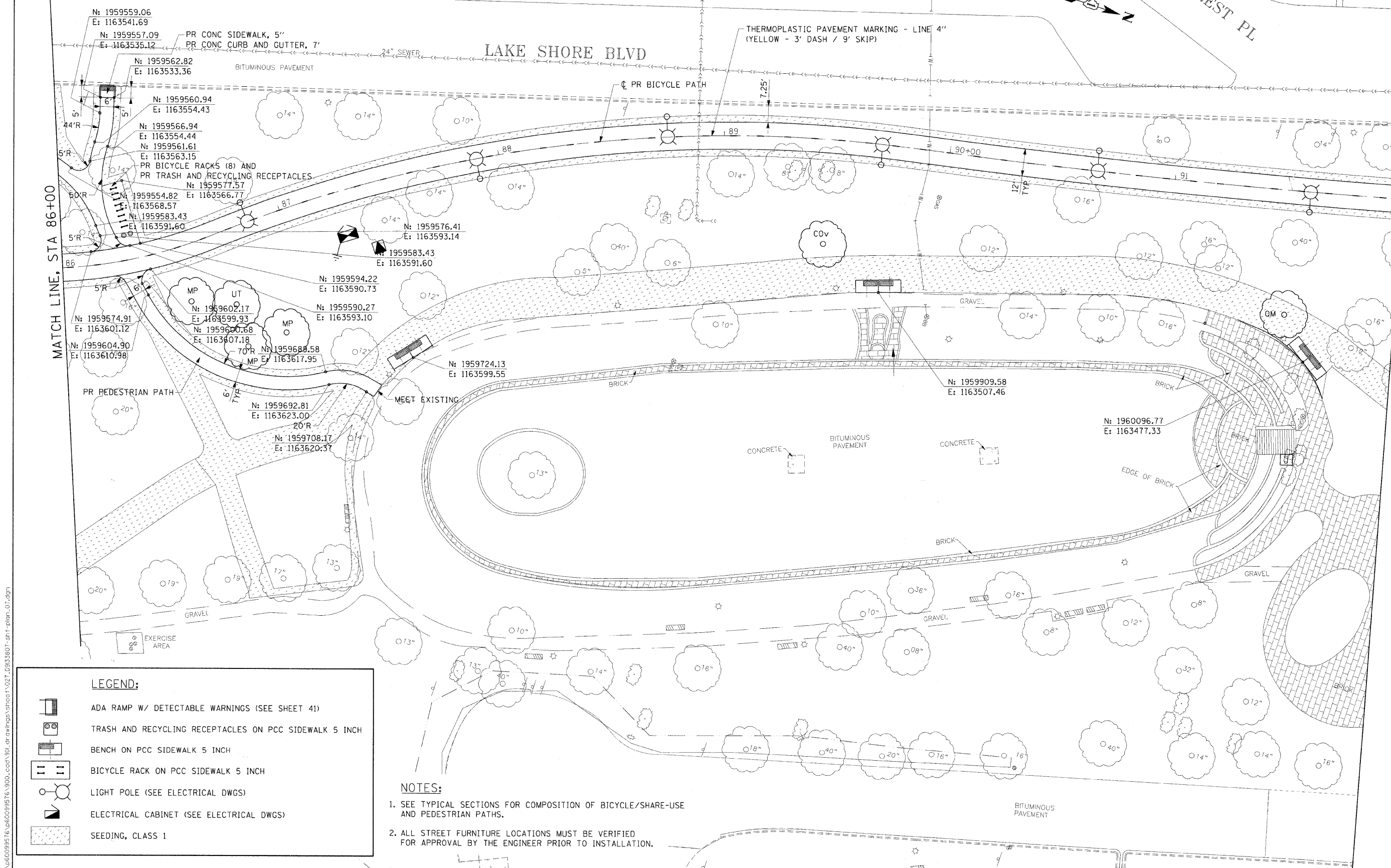
DAVIS ST

FOREST PL




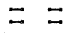
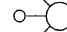

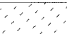
LAKE SHORE BLVD

MATCH LINE, STA 86+00

MATCH LINE, STA 92+00



LEGEND:

-  ADA RAMP W/ DETECTABLE WARNINGS (SEE SHEET 41)
-  TRASH AND RECYCLING RECEPTACLES ON PCC SIDEWALK 5 INCH
-  BENCH ON PCC SIDEWALK 5 INCH
-  BICYCLE RACK ON PCC SIDEWALK 5 INCH
-  LIGHT POLE (SEE ELECTRICAL DWGS)
-  ELECTRICAL CABINET (SEE ELECTRICAL DWGS)
-  SEEDING, CLASS 1

NOTES:

1. SEE TYPICAL SECTIONS FOR COMPOSITION OF BICYCLE/SHARE-USE AND PEDESTRIAN PATHS.
2. ALL STREET FURNITURE LOCATIONS MUST BE VERIFIED FOR APPROVAL BY THE ENGINEER PRIOR TO INSTALLATION.

AECOM

USER NAME	o.ozungkab	DESIGNED	BMC	REVISED	-
PLOT SCALE		DRAWN	LM	REVISED	-
PLOT DATE	12/01/2009	CHECKED	SLW	REVISED	-
		DATE	12/01/2009	REVISED	-

**STATE OF ILLINOIS
DEPARTMENT OF TRANSPORTATION**

PROPOSED IMPROVEMENTS PLAN

SCALE: 1"=20' SHEET NO. OF SHEETS STA. 86+00 TO STA. 92+00

F.A. RTE.	SECTION	COUNTY	TOTAL SHEETS	SHEET NO.
	07-00246-00-BT	COOK	81	27
ITEM NO. 102121		CONTRACT NO. 63423		
FED. ROAD DIST. NO. [ILLINOIS] FED. AID PROJECT				

12/01/2009 \\nasg\p2071\p6009576.p6009576_v900.ccd\900-drawings\c:\root\027_09033807-dht-plan-07.dgn

C-91-338-07