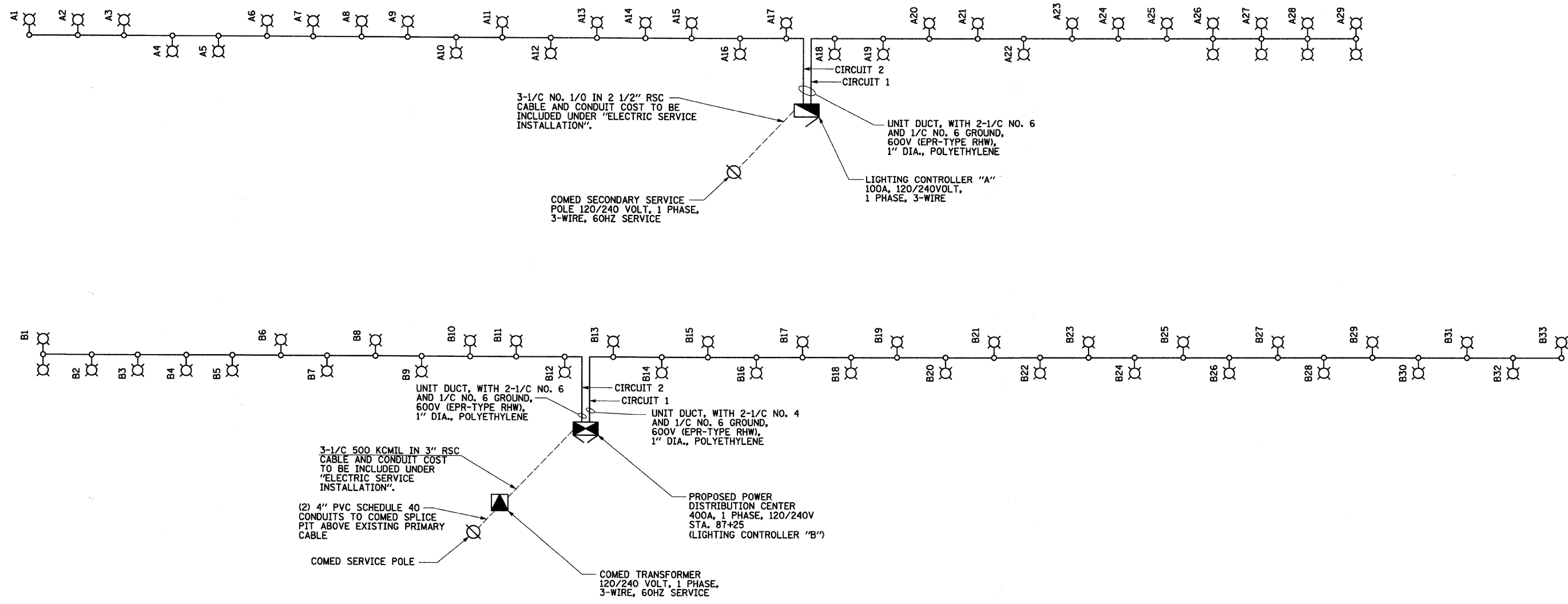


LOAD TABLE LIGHTING CONTROLLER "A"		
CIRCUIT	SINGLE PHASE	
	AMPS	WATTS
1	8.4	1,812
2	12.0	2,567
3	SPARE	0
4	SPARE	0
TOTAL	20.4	4,379

LOAD TABLE LIGHTING CONTROLLER "B"		
CIRCUIT	SINGLE PHASE	
	AMPS	WATTS
1	14.7	3,171
2	8.4	1,812
3	SPARE	0
4	SPARE	0
TOTAL	23.1	4,983



J:\258\Drawings\Sheet\Elec\1\101\10133807-sht-11.dgn
 8/1/09

FILE NAME =	USER NAME = #USER#	DESIGNED - AM	REVISED -
#FILES#		DRAWN - AM	REVISED -
	PLOT SCALE = #SCALE#	CHECKED - GR	REVISED -
	PLOT DATE = #DATE#	DATE - 12/01/2009	REVISED

STATE OF ILLINOIS
DEPARTMENT OF TRANSPORTATION

EVANSTON LAKE FRONT PATH
LIGHTING CONTROLLER
"A" AND "B" WIRING DIAGRAM

SCALE: 1"=40' SHEET NO. OF SHEETS STA. 97+00 TO STA. 106+83

F.A. RTE.	SECTION	COUNTY	TOTAL SHEETS	SHEET NO.
	07-00246-00-BT	COOK	81	50
ITEP NO. 102121		CONTRACT NO. 63423		
FED. ROAD DIST. NO. [ILLINOIS] FED. AID PROJECT				

SINGH 300 W. ADAMS ST.
 CHICAGO, IL 60606
 SINGH & ASSOCIATES, INC. TEL: (312) 629-0240
 CONSULTING ENGINEERS FAX: (312) 629-8449