

**POWER DISTRIBUTION CENTER**  
NOT TO SCALE

PANEL NAME: FPDC		SERVED FROM: ELECTRIC SERVICE		CONNECTED LOAD (kVA):			
PANEL MOUNTING: SURFACE		OPTIONS:		CONNECTED LOAD (AMPS):			
NO. OF CIRCUITS: 30		<input checked="" type="checkbox"/> EQUIPMENT GROUND BUS		L DEMAND %:			
MAIN OCD: 400A MCB		<input type="checkbox"/> ISOLATED GROUND BUS		R DEMAND %:			
BUS: 400A		<input type="checkbox"/> TVSS		M DEMAND %:			
LUGS: 500KCMIL		<input type="checkbox"/> OVERSIZED NEUTRAL		DEMAND LOAD (kVA):			
VOLTAGE: 120 / 240V, 1P, 3W		NEMA ENCLOSURE: NEMA 1		DEMAND LOAD (AMPS):			
A.I.C. SYM: 65,000		REMARKS:					
BUS MATERIAL: PLATED COPPER							
CCT NO.	TRIP	LOAD DESCRIPTION	CONNECTED LOAD		TRIP	LOAD DESCRIPTION	CCT NO.
			A	B			
1	20A	RECP	X		20A	RECP	2
3	20A	RECP		X	20A	RECP	4
5	30A	TWIST LOCK RECP	X		30A	TWIST LOCK RECP	6
7	2P			X	2P		8
9	30A	TWIST LOCK RECP	X		30A	TWIST LOCK RECP	10
11	2P			X	2P		12
13	50A	TWIST LOCK RECP	X		50A	TWIST LOCK RECP	14
15	2P			X	2P		16
17	50A	TWIST LOCK RECP	X		50A	TWIST LOCK RECP	18
19	2P			X	2P		20
21	100A	LIGHTING CONTROL PANEL "B"	X		-	SPACE	22
23	2P			X	-	SPACE	24
25	-	SPACE	X		-	SPACE	26
27	-	SPACE		X	-	SPACE	28
29	-	SPACE	X		-	SPACE	30
TOTAL							

4-1-98  
**C5288** —  
PAGE 1 OF 1

REVISE STANDARD DATED 12-1-93

4-1-98  
**C5288**  
PAGE 1 OF 1

**1-PH COMPT TR PAD - ESS/RSS**  
167kVA MAXIMUM CAPACITY

ITEM	MATERIAL DESCRIPTION (BY ComEd)	MIG	SI	UNIT	QTY
A	GROUNDING INSTALLATION				1
	(1) C8550_G0				1
C	Wire, Copper: #1/0-19 Strand, Soft Drawn, Tin Coated, Bare.	(1)	G	355082 FT	35
D	Connector, Compression: 1/0 Gr 2/0 Strd Cu. Run & Top.		U	368545 EA	1

- NOTES:**
- APPLICATION**
- THIS STANDARD SHALL BE USED FOR THE INSTALLATION OF AN ELECTRIC OR RESIDENTIAL SERVICE STATION FOUNDATION AS DESCRIBED IN THE "INFORMATION AND REQUIREMENTS FOR THE SUPPLY OF ELECTRIC SERVICE BOOK", SECTIONS 2.02 AND 2.07.
- SUPPLEMENTARY MATERIAL**
- WHEN BARE LEAD COVERED CABLES ARE LOCATED OR PLANNED WITHIN 200 FEET, OMIT ITEM "C" AND REPLACE WITH 1/0 LEAD CLAD COPPER CONDUCTOR (SI 350809). SPECIFY STAINLESS STEEL GROUNDING PER C8550.G00.
  - PRECAST ALTERNATIVES TO THIS POURED DESIGN MAY BE AVAILABLE. CONTACT CONSTRUCTION STANDARDS GROUP.
- INFORMATION**
- THE CUSTOMER TO INSTALL THE TRANSFORMER FOUNDATION, 1 INCH CONDUITS, AND TRENCH FOR ComEd GROUND WIRE.
  - ComEd TO PROVIDE AND INSTALL THE GROUND WIRE AND GRID.
  - AFTER PRIMARY AND SECONDARY CONDUITS ARE IN PLACE, BACKFILL WITH SCREENINGS, SAND, OR FINE EXCAVATED MATERIAL, COMPACT THOROUGHLY BEFORE POURING FOUNDATION.
  - CONCRETE TO BE IN ACCORDANCE WITH THE LATEST EDITION OF THE APPLICABLE ACI CODE AND AIR ENTRAINMENT. IT SHALL HAVE A MINIMUM COMPRESSIVE STRENGTH OF 3000 PSI AT 28 DAYS. AIR ENTRAINMENT SHALL BE 4 TO 7 PERCENT OF THE VOLUME OF CONCRETE.
  - TOP OF FOUNDATION TO BE SMOOTH AND LEVEL.
  - GRADE AWAY FROM FOUNDATION. FINAL GRADE SHALL BE WELL DRAINED AT ALL TIMES.
  - PRIMARY AND SECONDARY CONDUIT MUST COME THROUGH FOUNDATION IN DESIGNATED AREAS.
  - SEE C7723 FOR BURNDY-HUSKY DIE SET CROSS REFERENCE.
  - DO NOT PLACE CONDUITS UNDER THIS SECTION OF FOUNDATION IF AVOIDABLE.
  - DO NOT DISTURB EARTH IN FOUNDATION AREA MORE THAN NECESSARY WHEN INSTALLING CONDUIT.
  - TERMINATE PRIMARY AND SECONDARY CONDUITS FLUSH WITH TOP OF FOUNDATION.
  - BOX OUT CONDUIT OPENING.
  - SECONDARY CONDUIT LOCATION.
  - PRIMARY CONDUIT LOCATION.
  - PLEASE CONSULT GP 346 (SPCC) OR ENVIRONMENTAL SERVICES IF EITHER OF THE FOLLOWING EXISTS:
    - A SINGLE ABOVE GROUND TANK WITH A CAPACITY OF 660 GALLONS OR MORE.
    - MORE THAN ONE ABOVE GROUND TANK WITH TOTAL CAPACITY EQUAL TO OR EXCEEDING 1320 GALLONS.

**PRESSING TABLE (10)**

ITEM	TOOL & DIE	NO. OF GRIMPS
	Y-35	
D	U-0	1
	U-E	3

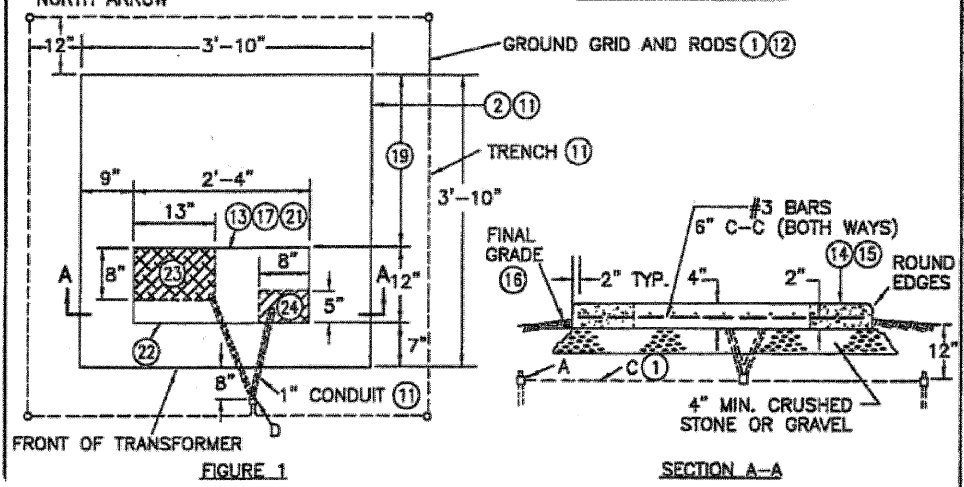


FIGURE 1

SECTION A-A

ACAD

**Exelon** SYSTEM STANDARD  
Energy Delivery

© Notice: The information contained on this page is the sole property of EXELON and is to be used only in conjunction with electric service provided by EXELON.

J:\258\Drawn\Sheet\Electrical\09\33807-sh1-Figplan-L2.dgn

FILE NAME =	USER NAME = #USER#	DESIGNED - AM	REVISED -
#FILES#		DRAWN - AM	REVISED -
	PLOT SCALE = #SCALE#	CHECKED - GR	REVISED -
	PLOT DATE = #DATE#	DATE - 12/01/2009	REVISED -

**STATE OF ILLINOIS**  
**DEPARTMENT OF TRANSPORTATION**

**EVANSTON LAKE FRONT PATH**  
**MISC ELECTRICAL DETAILS**

SCALE: 1/6 SHEET NO. OF SHEETS STA. 97+00 TO STA. 106+83

C-91-338-07

F.A. RTE.	SECTION	COUNTY	TOTAL SHEETS	SHEET NO.
	07-00246-00-BT	COOK	81	55
ITEM NO. 102121		CONTRACT NO. 63423		
FED. ROAD DIST. NO. [ILLINOIS] FED. AID PROJECT				

**SINGH** 300 W. ADAMS ST.  
CHICAGO, IL 60606  
TEL: (312) 629-0240  
SINGH & ASSOCIATES, INC.  
CONSULTING ENGINEERS FAX: (312) 629-8449

L-12