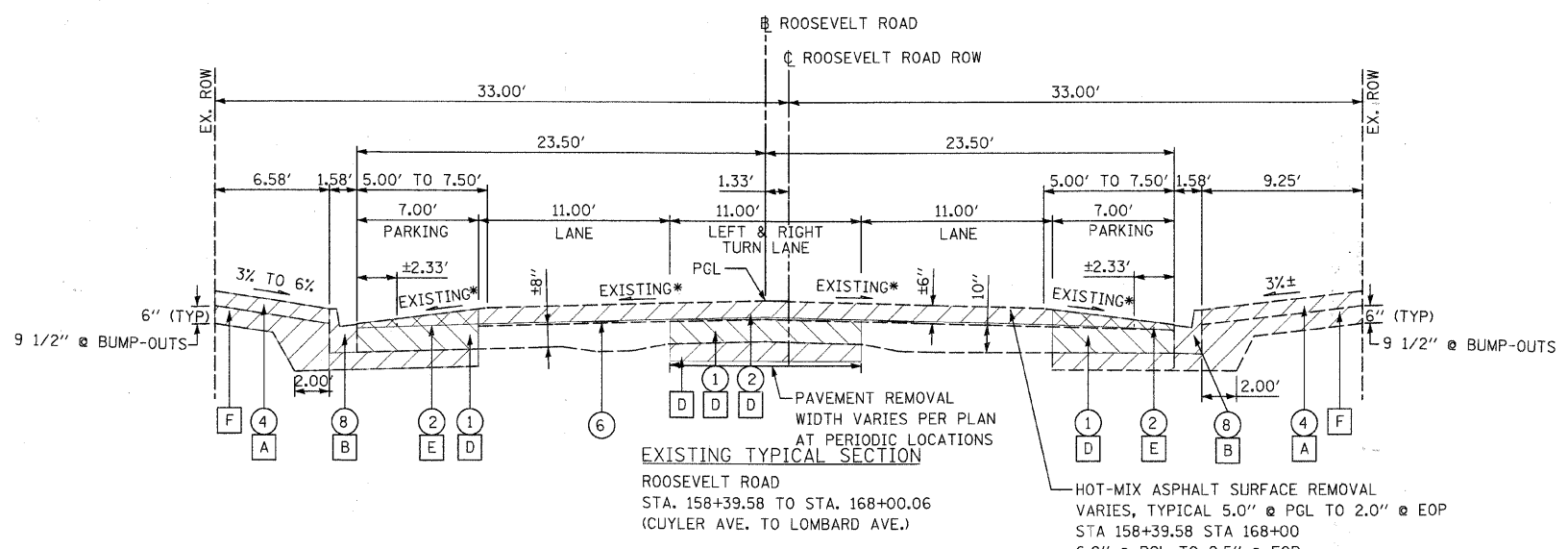
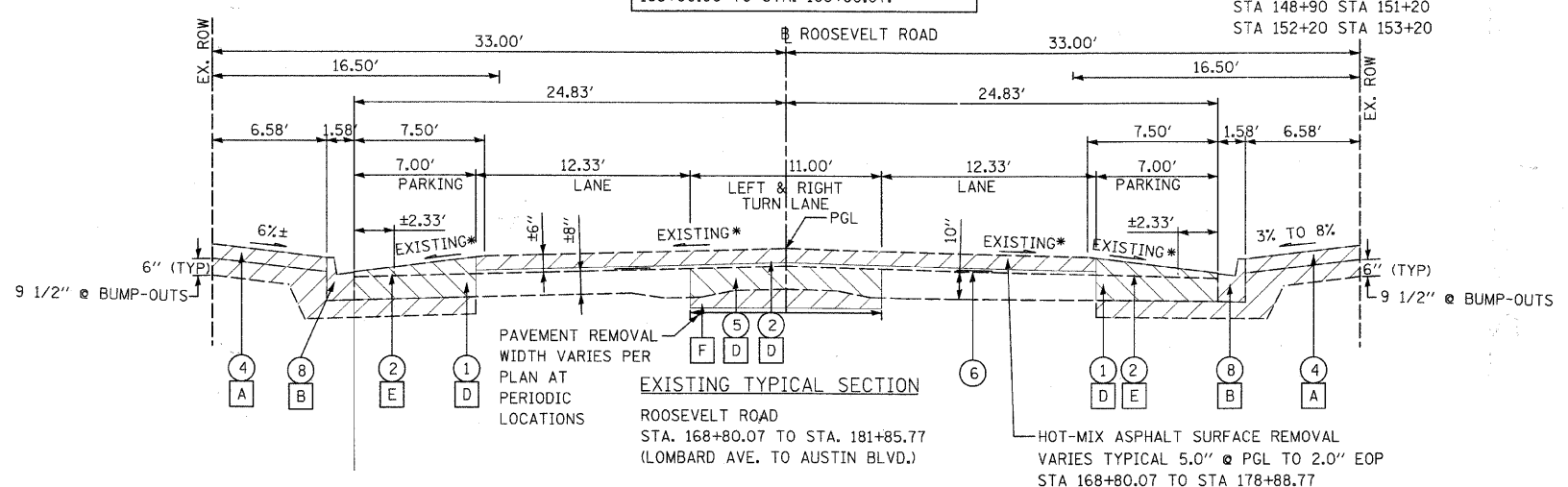


HOT-MIX ASPHALT SURFACE REMOVAL VARIES 5.0' @ PGL TO 2.5' @ LEFT EOP



HOT-MIX ASPHALT SURFACE REMOVAL VARIES, TYPICAL 5.0' @ PGL TO 2.0' @ EOP  
 STA 158+39.58 STA 168+00  
 6.0' @ PGL TO 2.5' @ EOP  
 STA 124+40 STA 125+00  
 STA 133+20 STA 134+00  
 STA 137+40 STA 138+60  
 STA 148+90 STA 151+20  
 STA 152+20 STA 153+20

1.33' CENTERLINE TRANSITION ACROSS LOMBARD AVE. INTERSECTION, STA. 168+00.06 TO STA. 168+80.07.



HOT-MIX ASPHALT SURFACE REMOVAL VARIES TYPICAL 5.0' @ PGL TO 2.0' EOP  
 STA 168+80.07 TO STA 178+88.77

LEGEND

- ① EXISTING P.C.C. PAVEMENT (6"-10")
- ② EXISTING BITUMINOUS RESURFACING ( ±6")
- ③ EXISTING CONCRETE CURB & GUTTER TYPE B-6.12
- ④ EXISTING P.C.C. SIDEWALK ( ±5")
- ⑤ EXISTING P.C.C. BASE COURSE ( ±9")
- ⑥ EXISTING STRIP REFLECTIVE CRACK CONTROL TREATMENT
- ⑦ EXISTING SUBBASE GRANULAR MATERIAL, TYBE B. ( ±4")
- ⑧ EXISTING VARIABLE HEIGHT CONCRETE CURB (3" TO 11") WITH 12" GUTTER

- REMOVAL PAY ITEMS
- A SIDEWALK REMOVAL
  - B COMBINATION CURB AND GUTTER REMOVAL
  - C PAVEMENT REMOVAL
  - D PAVEMENT REMOVAL (FOR BUMP-OUT AND DECORATIVE MEDIAN AREAS ONLY)
  - E HOT-MIX ASPHALT SURFACE REMOVAL, VARIABLE DEPTH
  - F EARTHWORK EXCAVATION

\* THE EXISTING HMA PAVEMENT CROWN IS WARPED WITH CROWN SLOPES RANGING FROM 3.2% TO 6% EVERY BLOCK

FILE NAME = DIRTE38-shr-typical02.dgn	USER NAME = ID01	DESIGNED - DA	REVISED -	<b>STATE OF ILLINOIS DEPARTMENT OF TRANSPORTATION</b>	<b>EXISTING TYPICAL ROADWAY SECTIONS ROOSEVELT ROAD - HARLEM AVE TO AUSTIN BLVD</b>		F.A.P. RTE. 347	SECTION 09-00248-00-RS	COUNTY COOK	TOTAL SHEETS 274	SHEET NO. 10	
PLOT SCALE = 5.0000' / IN.	CHECKED - JB	DATE	REVISED -		SCALE: 1" = 20'	SHEET NO. OF SHEETS	STA. TO STA.	CONTRACT NO. 63432				
PLOT DATE = 3/11/2010			REVISED -		ILLINOIS FED. AID PROJECT							
			REVISED -									