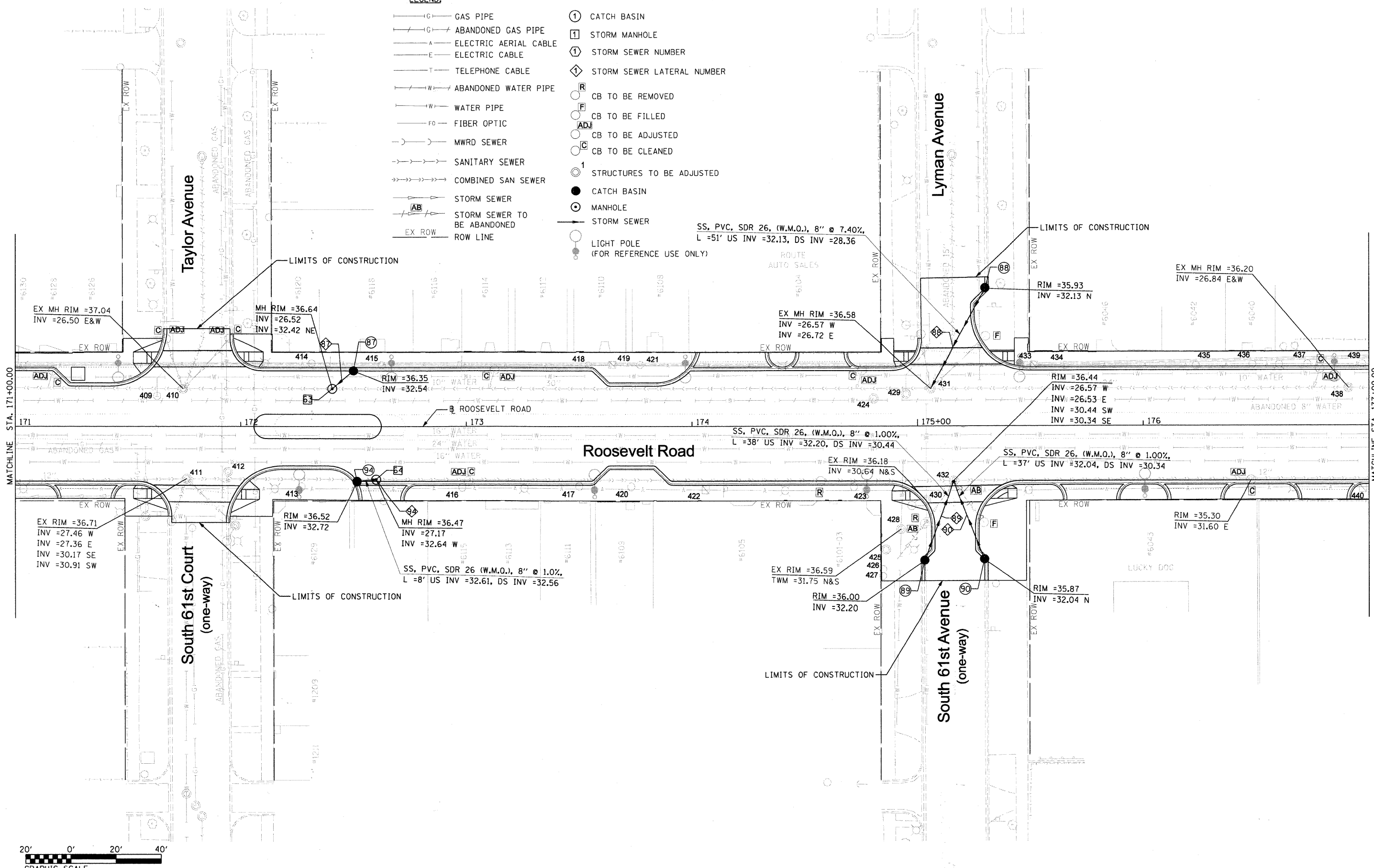




LEGEND:

- GAS PIPE
- ABANDONED GAS PIPE
- ELECTRIC AERIAL CABLE
- ELECTRIC CABLE
- TELEPHONE CABLE
- ABANDONED WATER PIPE
- WATER PIPE
- FIBER OPTIC
- MWRD SEWER
- SANITARY SEWER
- COMBINED SAN SEWER
- STORM SEWER
- STORM SEWER TO BE ABANDONED
- ROW LINE
- CATCH BASIN
- STORM MANHOLE
- STORM SEWER NUMBER
- STORM SEWER LATERAL NUMBER
- CB TO BE REMOVED
- CB TO BE FILLED
- CB TO BE ADJUSTED
- CB TO BE CLEANED
- STRUCTURES TO BE ADJUSTED
- CATCH BASIN
- MANHOLE
- STORM SEWER
- LIGHT POLE (FOR REFERENCE USE ONLY)



FILE NAME = DIRTE38-aht-drain14.dgn	USER NAME = IDOT	DESIGNED - DA	REVISED -	STATE OF ILLINOIS DEPARTMENT OF TRANSPORTATION	DRAINAGE AND UTILITIES PLAN	F.A.P. RTE. 347	SECTION 09-00248-00-RS	COUNTY COOK	TOTAL SHEETS 274	SHEET NO. 107	
PLOT SCALE = 20,000' / IN.						SCALE: 1" = 20' SHEET NO. 14 OF 30 SHEETS STA. 171+00.00 TO STA. 177+00.00					
PLOT DATE = 3/23/2010						CONTRACT NO. 63432					
						ILLINOIS FED. AID PROJECT					