

| ITEM | QUANTITY | MAIN CIRCUIT, 1 POLE, 240 VOLT |
|------|----------|---|
| A | 1 | MAIN CIRCUIT, 1 POLE, 240 VOLT 5AMP,FRAME. 5AMP NON-INTERCHANGEABLE TRIP INTERRUPTING RATING NEMA-22000 AMP. AT 240 VOLT. |
| B | 1 | 1.5 KVA, SINGLE PHASE, ENCAPSULATED TRANSFORMER 240X480/120X240 VOLT, 60 HZ. TRIP INTERRUPTING RATING NEMA-22000 AMP. AT 240 VOLT. |
| C | 2 | COPPER GROUND BUS 1/4" X 1" X 6" LONG MOUNTED ON PANEL WITH LUGS AND SPARE LUGS |
| D | 1 | BRANCH CIRCUIT, 1 POLE, 120 VOLT 20AMP,FRAME. 20AMP NON-INTERCHANGEABLE TRIP INTERRUPTING RATING NEMA-22000 AMP. AT 120 VOLT. |

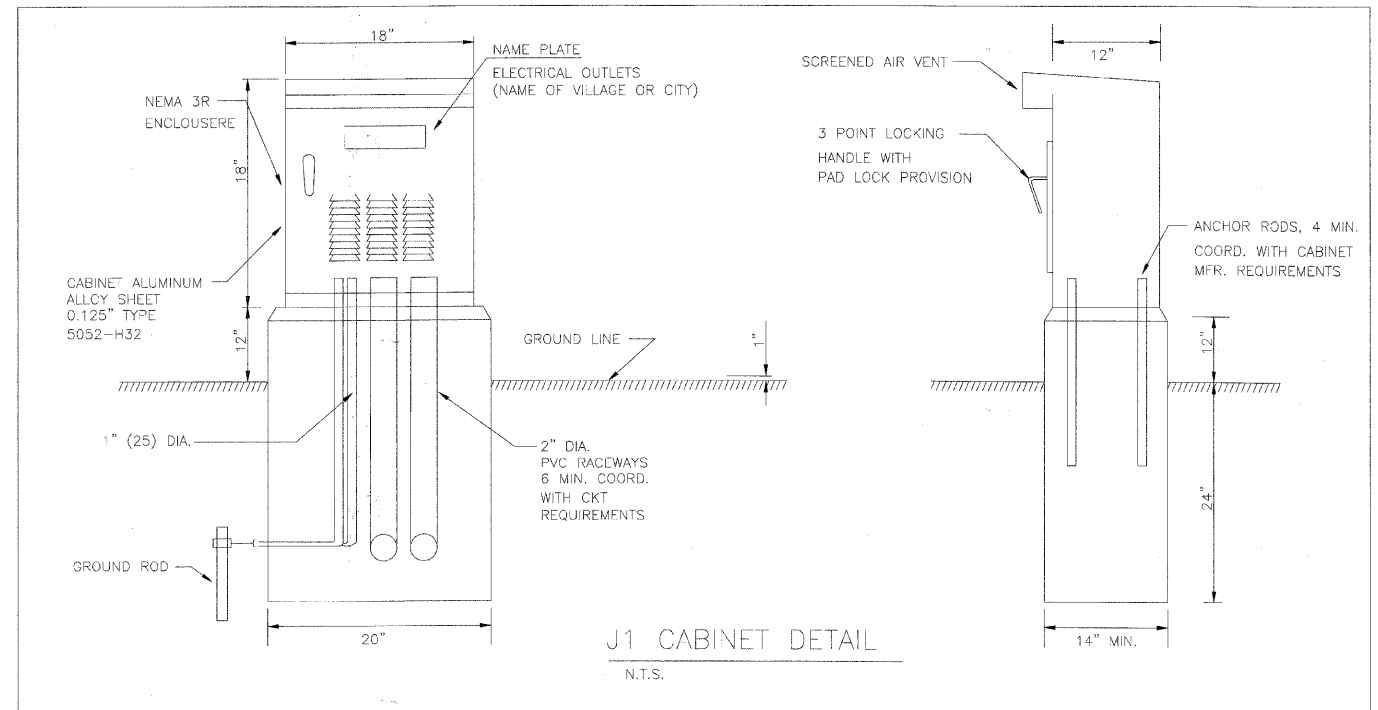
**WIRING DIAGRAM FOR J1 CABINET
FOR ONE RECEPTACLE**

N.T.S.
REFER TO LANDSCAPE PLAN FOR EXACT LOCATION OF CABINET, HANDHOLE, AND RECEPTACLE.
FINAL LOCATION TO BE COORDINATED WITH LANDSCAPE ARCHITECT.

LEGEND

- Proposed handhole
- Proposed vandal proof receptacle (Weatherproof and Ground Fault Interrupter)
UL listed, corrosion resistant and cover NEC 406.8.B.2a compliant
- Ground Rod

- NOTES:
- ALL EXTERNAL HARDWARE SHALL BE STAINLESS STEEL.
 - THE HEADS OF CONNECTORS SCREWS SHALL BE PAINTED WHITE FOR NEUTRAL BAR CONNECTION AND GREEN FOR GROUND BAR CONNECTORS.
 - ALL WIRING WITHIN THE CABINET SHALL BE COLOR CODED AS INDICATED
R = RED BL = BLUE W = WHITE FOR NEUTRAL
B = BLACK Y = YELLOW G = GREEN FOR GROUND
 - PROVIDE SEALING GROMMETS FOR ALL OPEN WIRING EXTENDED FROM DEVICES IN BOXES OR CABINETS WITHIN THE CONTROL CABINET.
 - ALL WIRING SHALL BE NEATLY DRESSED AND SUPPORTED.
 - FOUNDATION SIZE SHALL BE COORDINATED WITH CABINET SIZE AND MFR.
 - DOOR SHALL BE CONSTRUCTED FROM SAME TYPE OF MATERIAL AND THICKNESS AS CABINET.
 - DOOR SHALL BE EQUIPPED WITH THREE POINT LATCHING MECHANISM WITH NYLON ROLLERS AT TOP THE BOTTOM.
 - DOOR HINGE SHALL BE A HEAVY GAUGE CONTINUOUS HINGE WITH A 1/4" (6.35 mm) DIA. STAINLESS STEEL HINGE P.I.N.
 - CABINETS SHALL BE PRIMED AND PAINTED AS SPECIFIED.
 - ALL CONNECTIONS SHALL BE ABOVE GROUND (NO UNDERGROUND SPLICING)
 - REFER TO LANDSCAPE PLANS FOR EXACT LOCATION OF RECEPTACLE ENCLOSURE.
RECEPTABLES ENCLOSURE SHALL NOT BE INSTALLED ON THE SIDEWALK OR AT GRADE LEVELS CAUSING SAFETY HAZARDS OR OBSTRUCTIONS TO PEDESTRIANS.



TERRA ENGINEERING LTD. 225 W. OHIO ST., FOURTH FL.
CHICAGO, IL 60654
(312)467-0123

**STATE OF ILLINOIS
DEPARTMENT OF TRANSPORTATION**

WIRING DIAGRAM FOR RECEPTACLE CABINET FOR ONE RECEPTACLE

| | | | |
|-------------------------------------|------------------------------|---------------|-----------|
| FILE NAME = DIRTE38-shr-light84.dgn | USER NAME = IDOT | DESIGNED - EE | REVISED - |
| | | DRAWN - PY | REVISED - |
| | | CHECKED - JB | REVISED - |
| | | DATE - | REVISED - |
| | PLOT SCALE = 20.0000 1 / IN. | | |
| | PLOT DATE = 3/11/2018 | | |

SCALE: 1" = 20' SHEET NO. 4 OF 29 SHEETS STA. TO STA.

| F.A.P. RTE. | SECTION | COUNTY | TOTAL SHEETS | SHEET NO. |
|---------------------------|----------------|--------|--------------|-----------|
| 347 | 09-00248-00-RS | COOK | 274 | 224 |
| CONTRACT NO. 63432 | | | | |
| ILLINOIS FED. AID PROJECT | | | | |