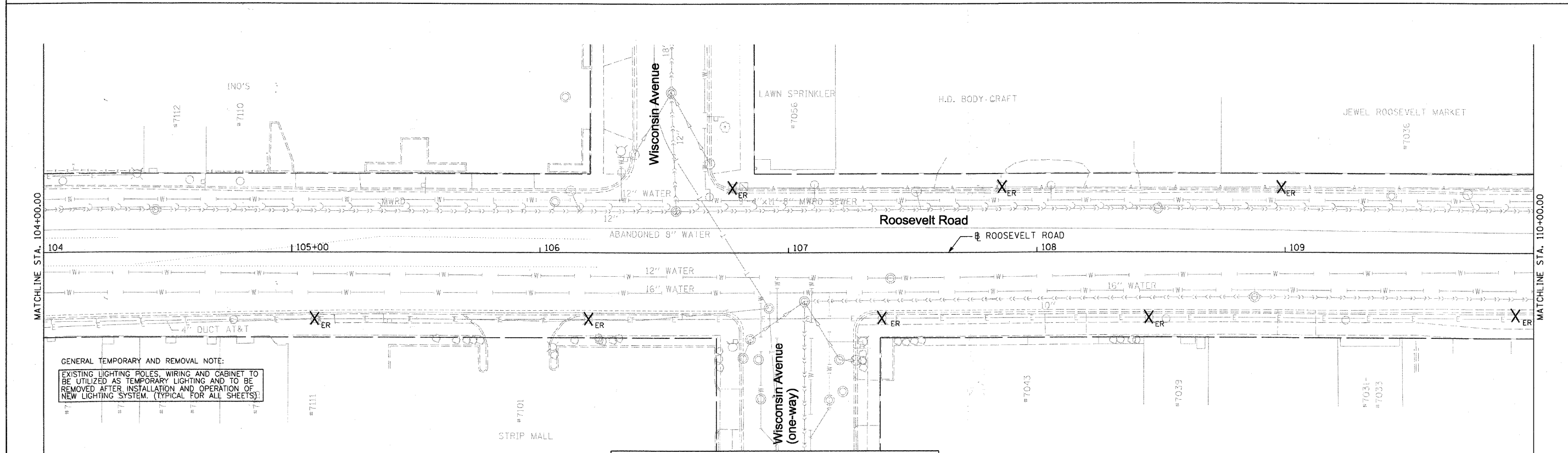
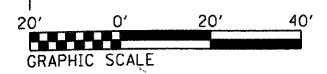


PROPOSED PLAN



GENERAL TEMPORARY AND REMOVAL NOTE:
 EXISTING LIGHTING POLES, WIRING AND CABINET TO BE UTILIZED AS TEMPORARY LIGHTING AND TO BE REMOVED AFTER INSTALLATION AND OPERATION OF NEW LIGHTING SYSTEM. (TYPICAL FOR ALL SHEETS)



TERRA ENGINEERING LTD.
 225 W. OHIO ST., FOURTH FL.
 CHICAGO, IL 60654
 (312)467-0123

**STATE OF ILLINOIS
 DEPARTMENT OF TRANSPORTATION**

**LIGHTING INSTALLATION
 AND REMOVAL PLAN**

SCALE: 1" = 20' SHEET NO. 8 OF 29 SHEETS STA. 104+00.00 TO STA. 110+00.00

REMOVAL PLAN

F.A.P. RTE.	SECTION	COUNTY	TOTAL SHEETS	SHEET NO.
347	09-00248-00-RS	COOK	274	228
				CONTRACT NO. 63432
ILLINOIS FED. AID PROJECT				

FILE NAME = DIRTE38-shr-light88.dgn	USER NAME = IDOT	DESIGNED - EE	REVISED -
	PLOT SCALE = 20.0000' / IN.	DRAWN - PY	REVISED -
	PLOT DATE = 3/11/2018	CHECKED - JB	REVISED -
		DATE -	REVISED -