

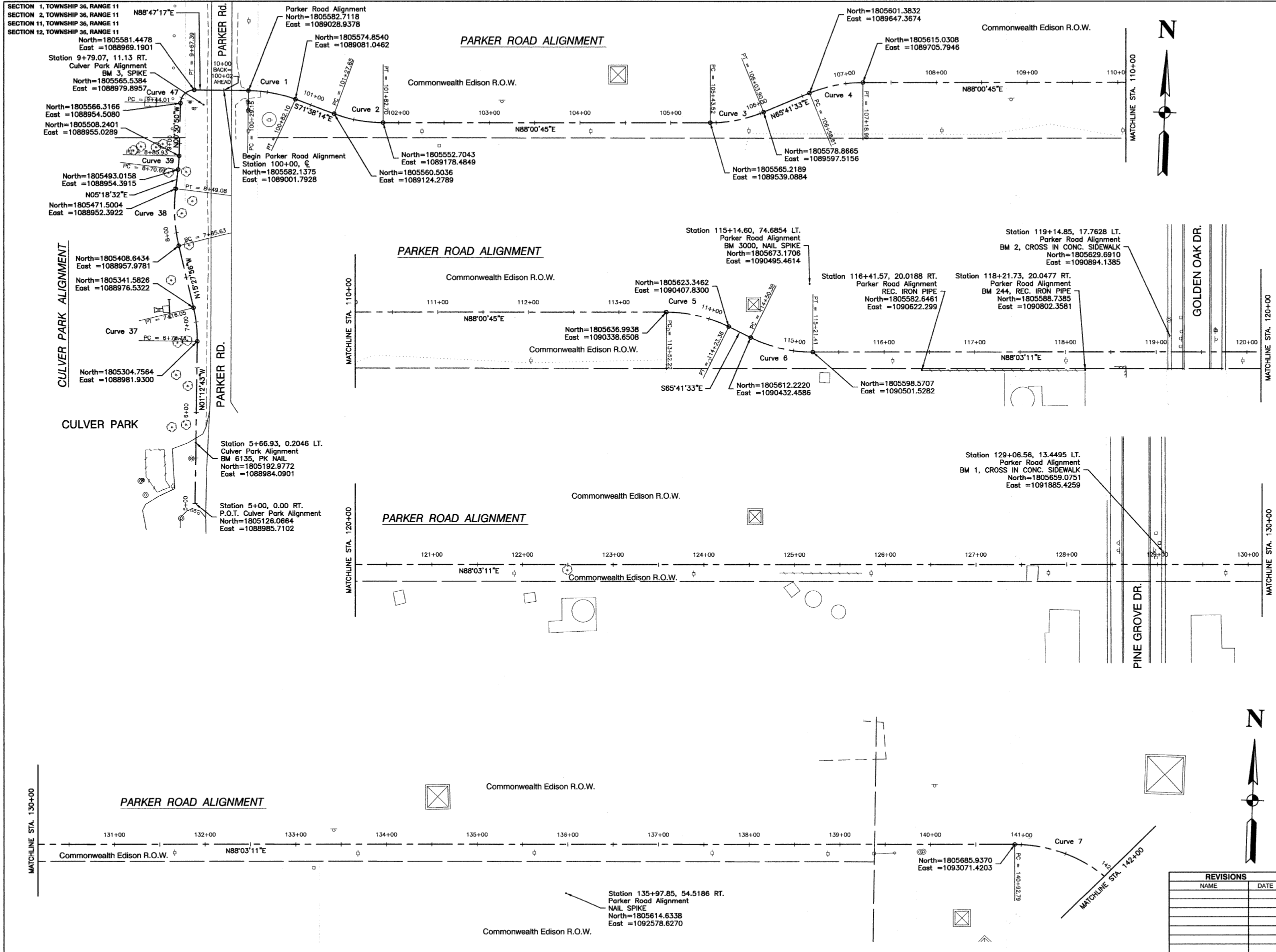
SECTION 1, TOWNSHIP 36, RANGE 11  
SECTION 2, TOWNSHIP 36, RANGE 11  
SECTION 11, TOWNSHIP 36, RANGE 11  
SECTION 12, TOWNSHIP 36, RANGE 11

F. A. U. MILE	SECTION	COUNTY	TOTAL SHEETS	SHEET NO.
1600	06-00008-00-BT	WILL	73	6
STA.		TO STA.		
FED. ROAD DIST. NO. 1		ILLINOIS	FED. AID PROJECT	CMM-0001 (673)

CONTRACT #63440



SCALE: 1"=50'



<p><b>CURVE 37</b> PI= STA. 6+97.48 Δ = 14°15'13" D = 38°11'50" R = 150.00' T = 18.75' L = 37.32' E = 1.17'</p>	<p><b>CURVE 3</b> PI= STA. 105+74.10 Δ = 22°19'12" D = 36°57'54" R = 155.00' T = 30.58' L = 60.38' E = 2.99'</p>
<p><b>CURVE 38</b> PI= STA. 8+17.71 Δ = 20°46'28" D = 32°44'26" R = 175.00' T = 32.08' L = 63.45' E = 2.92'</p>	<p><b>CURVE 4</b> PI= STA. 106+89.19 Δ = 22°19'12" D = 36°57'54" R = 155.00' T = 30.58' L = 60.38' E = 2.99'</p>
<p><b>CURVE 39</b> PI= STA. 8+78.32 Δ = 05°49'22" D = 38°11'50" R = 150.00' T = 7.63' L = 15.42' E = 0.19'</p>	<p><b>CURVE 5</b> PI= STA. 113+88.43 Δ = 28°17'42" D = 36°57'54" R = 155.00' T = 36.21' L = 71.14' E = 4.17'</p>
<p><b>CURVE 47</b> PI= STA. 9+58.83 Δ = 89°18'07" D = 21°58'19" R = 15.00' T = 14.82' L = 23.38' E = 6.09'</p>	<p><b>CURVE 6</b> PI= STA. 114+86.53 Δ = 28°15'18" D = 36°57'54" R = 155.00' T = 36.15' L = 71.03' E = 4.16'</p>
<p><b>CURVE 1</b> PI= STA. 100+55.89 Δ = 19°34'29" D = 36°57'54" R = 155.00' T = 27.82' L = 55.05' E = 2.48'</p>	<p><b>CURVE 7</b> PI= STA. 142+47.59 Δ = 89°55'40" D = 36°57'54" R = 155.00' T = 154.80' L = 243.28' E = 64.06'</p>
<p><b>CURVE 2</b> PI= STA. 101+55.47 Δ = 20°21'01" D = 36°57'54" R = 155.00' T = 27.82' L = 55.05' E = 2.48'</p>	

**ALIGNMENT DATUM:**  
1. COORDINATES: ILLINOIS STATE PLANE EASTERN ZONE  
2. ELEVATIONS: FEMA (NGVD '29)

REVISIONS	
NAME	DATE

ILLINOIS DEPARTMENT OF TRANSPORTATION  
**HOMER GLEN GMAQ COMMUNITY BIKE TRAIL AND EAST EXTENSION ALIGNMENT PLAN**  
Culver Park & Parker Road to Bell Road

SCALE: VERT. N/A  
HORIZ. 1"=50'  
DATE: FEBRUARY 2, 2010  
DRAWN BY: JJB  
CHECKED BY: BDB