

SECTION 1, TOWNSHIP 36, RANGE 11
 SECTION 2, TOWNSHIP 36, RANGE 11
 SECTION 11, TOWNSHIP 36, RANGE 11
 SECTION 12, TOWNSHIP 36, RANGE 11

| | | | | |
|-----------------------|----------------|------------------|----------------|-----------|
| P. A. U. R.T.C. | SECTION | COUNTY | TOTAL SHEETS | SHEET NO. |
| 1600 | 06-00008-00-BT | WILL | 73 | 7 |
| STA. | TO STA. | | | |
| FED. ROAD DIST. NO. 1 | ILLINOIS | FED. AID PROJECT | CMM-0001 (673) | |

CONTRACT #63440



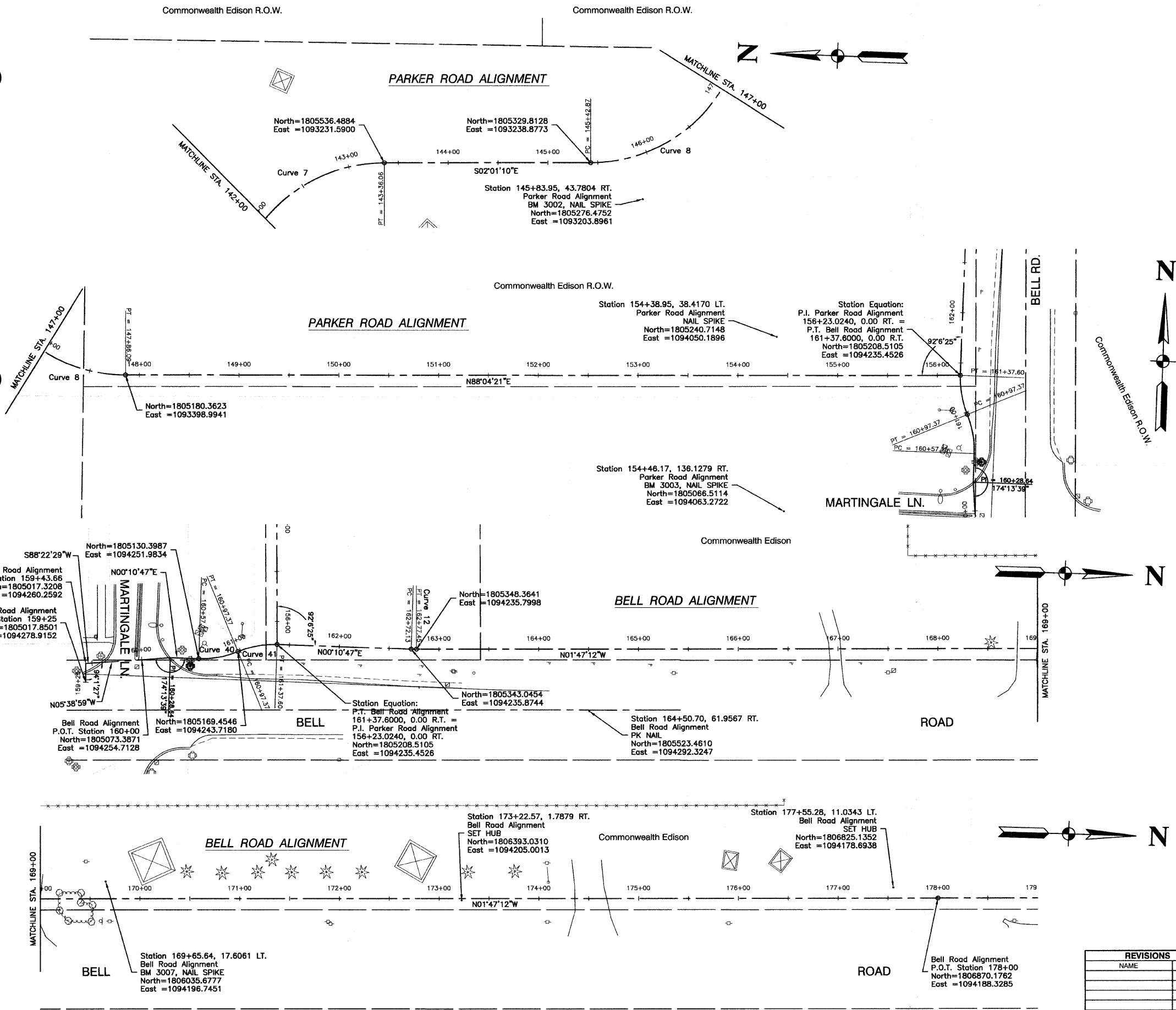
SCALE: 1" = 50'

From:
PARKER ROAD

From:
PARKER ROAD

Along:
BELL ROAD

Along:
BELL ROAD



- CURVE 7**
 PI= STA. 142+47.59
 $\Delta = 89^{\circ}55'40''$
 $D = 36^{\circ}57'54''$
 $R = 155.00'$
 $T = 154.80'$
 $L = 243.28'$
 $E = 64.06'$
- CURVE 8**
 PI= STA. 146+97.62
 $\Delta = 89^{\circ}54'29''$
 $D = 36^{\circ}57'54''$
 $R = 155.00'$
 $T = 154.75'$
 $L = 243.22'$
 $E = 64.03'$
- CURVE 40**
 PI= STA. 160+77.57
 $\Delta = 24^{\circ}15'27''$
 $D = 60^{\circ}18'41''$
 $R = 95.00'$
 $T = 20.42'$
 $L = 40.22'$
 $E = 2.17'$
- CURVE 41**
 PI= STA. 161+17.79
 $\Delta = 24^{\circ}15'27''$
 $D = 60^{\circ}18'41''$
 $R = 95.00'$
 $T = 20.42'$
 $L = 40.22'$
 $E = 2.17'$
- CURVE 12**
 PI= STA. 162+74.79
 $\Delta = 1^{\circ}57'59''$
 $D = 36^{\circ}57'54''$
 $R = 155.00'$
 $T = 2.86'$
 $L = 5.32'$
 $E = 0.02'$

ALIGNMENT DATUM:
 1. COORDINATES: ILLINOIS STATE PLANE EASTERN ZONE
 2. ELEVATIONS: FEMA (NGVD '29)

| REVISIONS | |
|-----------|------|
| NAME | DATE |
| | |
| | |
| | |
| | |
| | |

ILLINOIS DEPARTMENT OF TRANSPORTATION
HOMER GLEN GMAQ COMMUNITY BIKE TRAIL AND EAST EXTENSION ALIGNMENT PLAN
 Culver Park & Parker Road to Bell Road
 SCALE: VERT. N/A
 HORIZ. 1" = 50'
 DATE: FEBRUARY 2, 2010
 DRAWN BY: JJB
 CHECKED BY: BDB