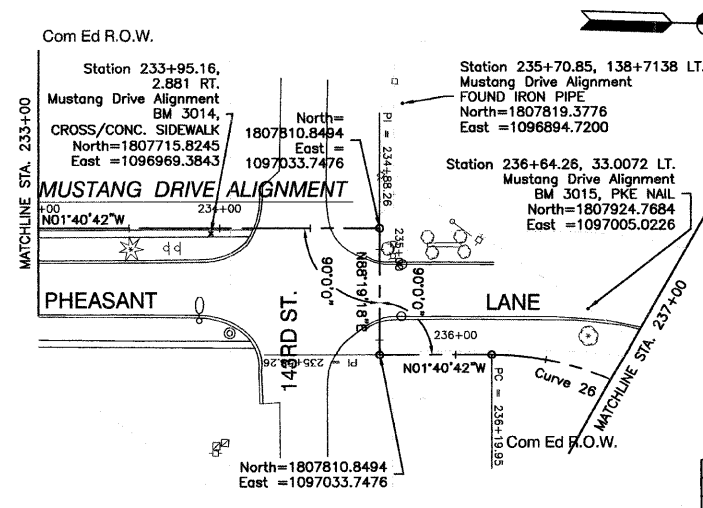
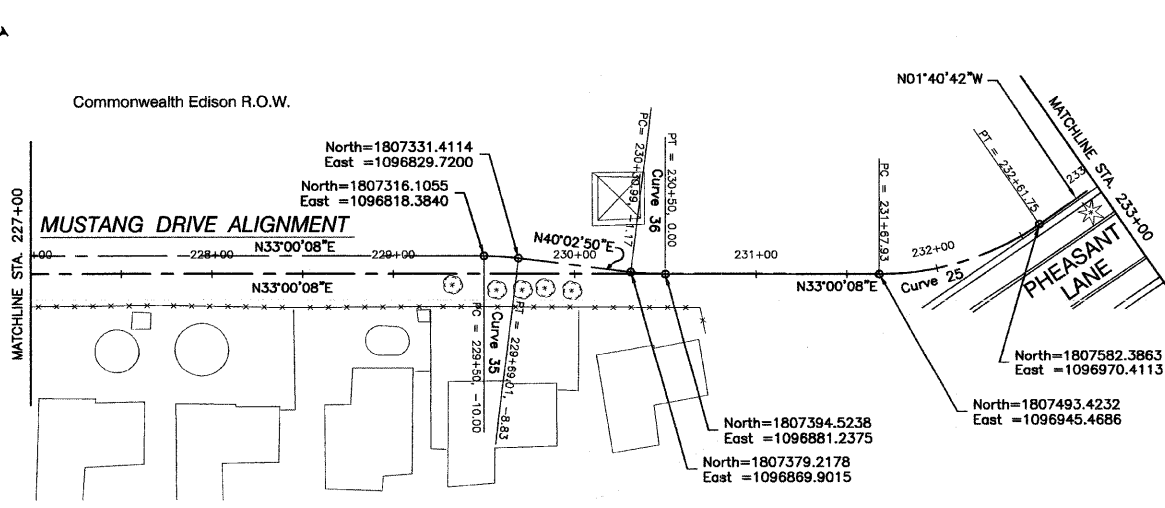
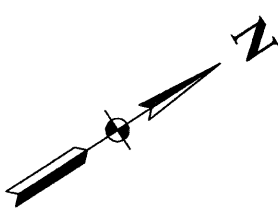
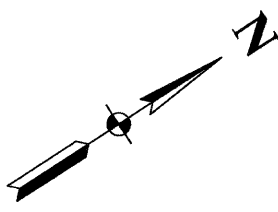
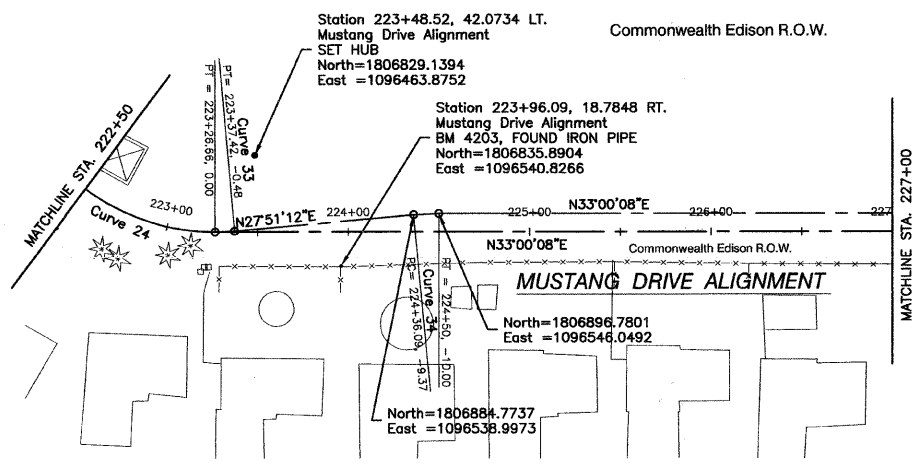
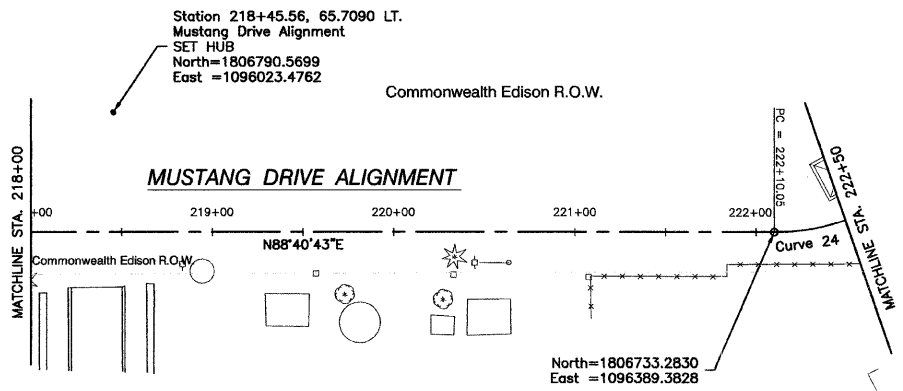
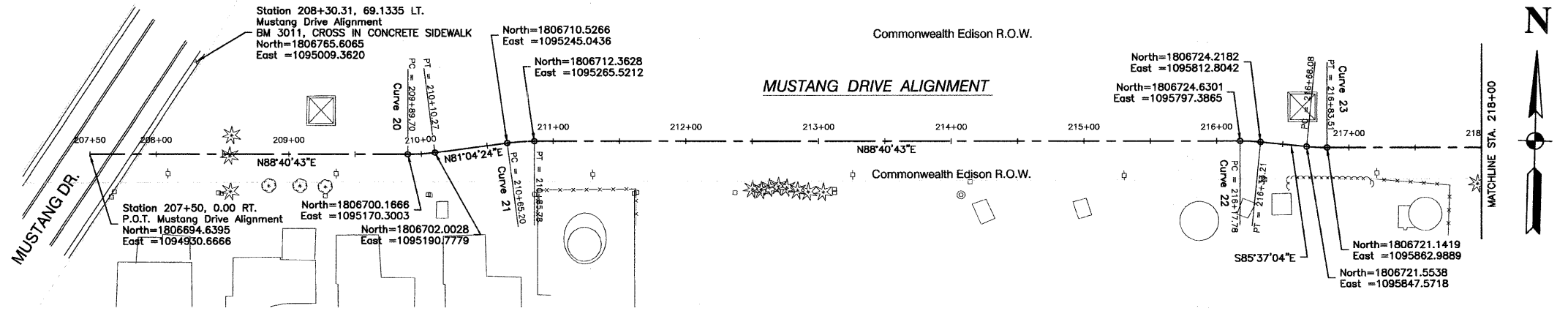
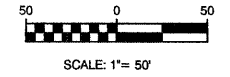


SECTION 1, TOWNSHIP 36, RANGE 11
 SECTION 2, TOWNSHIP 36, RANGE 11
 SECTION 11, TOWNSHIP 36, RANGE 11
 SECTION 12, TOWNSHIP 36, RANGE 11

F. A. L. REC.	SECTION	COUNTY	TOTAL SHEETS	SHEET NO.
1600	06-00008-00-BT	WILL	73	9
STA.	TO STA.			
FED. ROAD DIST. NO. 1	ILLINOIS	FED. AID PROJECT	CMM-0001 (673)	

CONTRACT #63440



CURVE 20 PI= STA. 210+00.00 Δ = 7°36'20" D = 36°57'54" R = 155.00' T = 10.30' L = 20.57' E = 0.34'	CURVE 26 PI= STA. 236+68.42 Δ = 34°43'40" D = 36°57'54" R = 155.00' T = 48.47' L = 93.95' E = 7.40'
CURVE 21 PI= STA. 210+75.50 Δ = 7°36'20" D = 36°57'54" R = 155.00' T = 10.30' L = 20.57' E = 0.34'	CURVE 33 PI= STA. 223+32.06 Δ = 05°08'56" D = 47°44'47" R = 120.00' T = 5.40' L = 10.78' E = 0.12'
CURVE 22 PI= STA. 216+25.50 Δ = 05°42'13" D = 36°57'54" R = 155.00' T = 7.72' L = 15.43' E = 0.19'	CURVE 34 PI= STA. 224+43.06 Δ = 05°08'56" D = 36°57'54" R = 155.00' T = 6.97' L = 13.93' E = 0.16'
CURVE 23 PI= STA. 216+75.80 Δ = 5°42'13" D = 36°57'54" R = 155.00' T = 7.72' L = 15.43' E = 0.19'	CURVE 35 PI= STA. 229+59.54 Δ = 07°02'42" D = 36°57'54" R = 155.00' T = 9.54' L = 19.06' E = 0.29'
CURVE 24 PI= STA. 222+73.42 Δ = 55°40'36" D = 47°44'47" R = 120.00' T = 63.37' L = 18.61' E = 15.71'	CURVE 36 PI= STA. 230+40.53 Δ = 07°02'42" D = 36°57'54" R = 155.00' T = 9.54' L = 19.06' E = 0.29'
CURVE 25 PI= STA. 232+16.33 Δ = 34°40'49" D = 36°57'54" R = 155.00' T = 48.40' L = 93.82' E = 7.38'	

ALIGNMENT DATUM:
 1. COORDINATES: ILLINOIS STATE PLANE EASTERN ZONE
 2. ELEVATIONS: FEMA (NGVD '29)

REVISIONS	
NAME	DATE

ILLINOIS DEPARTMENT OF TRANSPORTATION
**HOMER GLEN GMAQ COMMUNITY BIKE TRAIL
 AND EAST EXTENSION
 ALIGNMENT PLAN
 Mustang Drive to Venetian Way**

SCALE: VERT. N/A
 HORIZ. 1"=50'
 DATE: FEBRUARY 2, 2010
 DRAWN BY: JJB
 CHECKED BY: BDB