

SECTION 1, TOWNSHIP 36, RANGE 11  
 SECTION 2, TOWNSHIP 36, RANGE 11  
 SECTION 11, TOWNSHIP 36, RANGE 11  
 SECTION 12, TOWNSHIP 36, RANGE 11

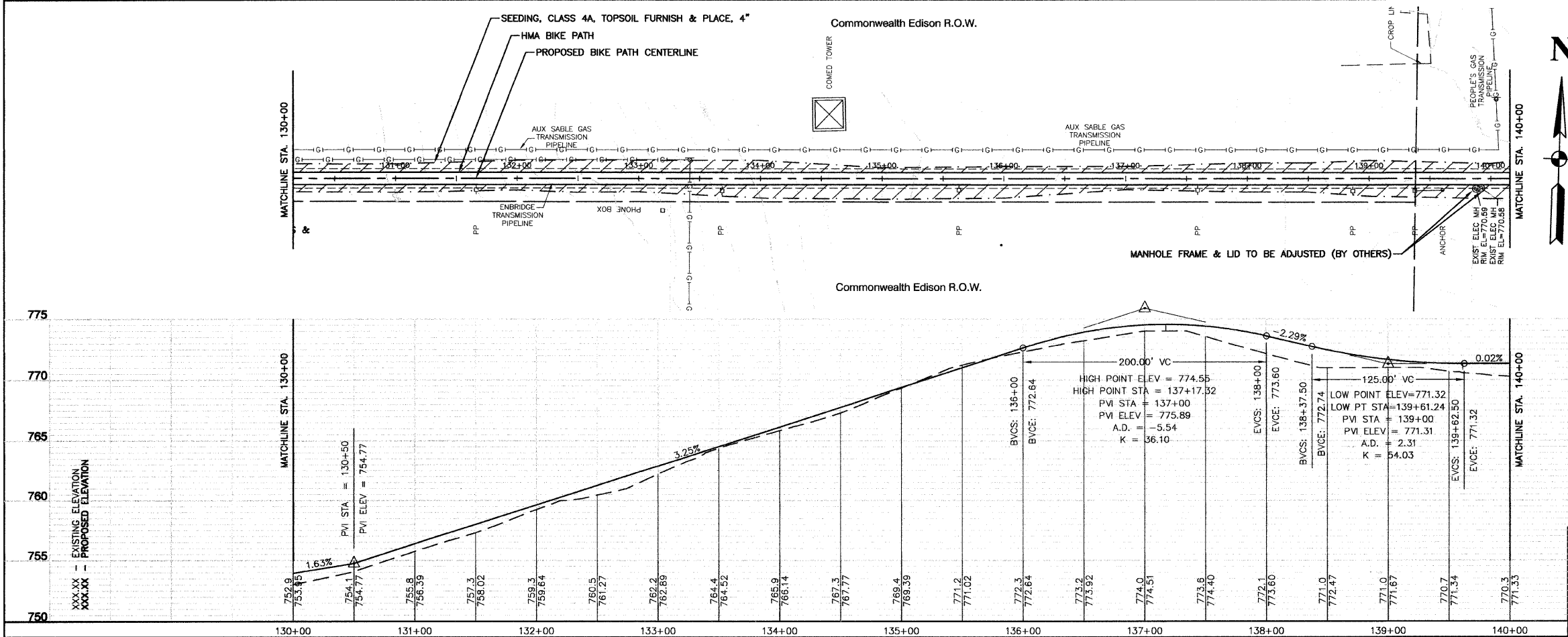
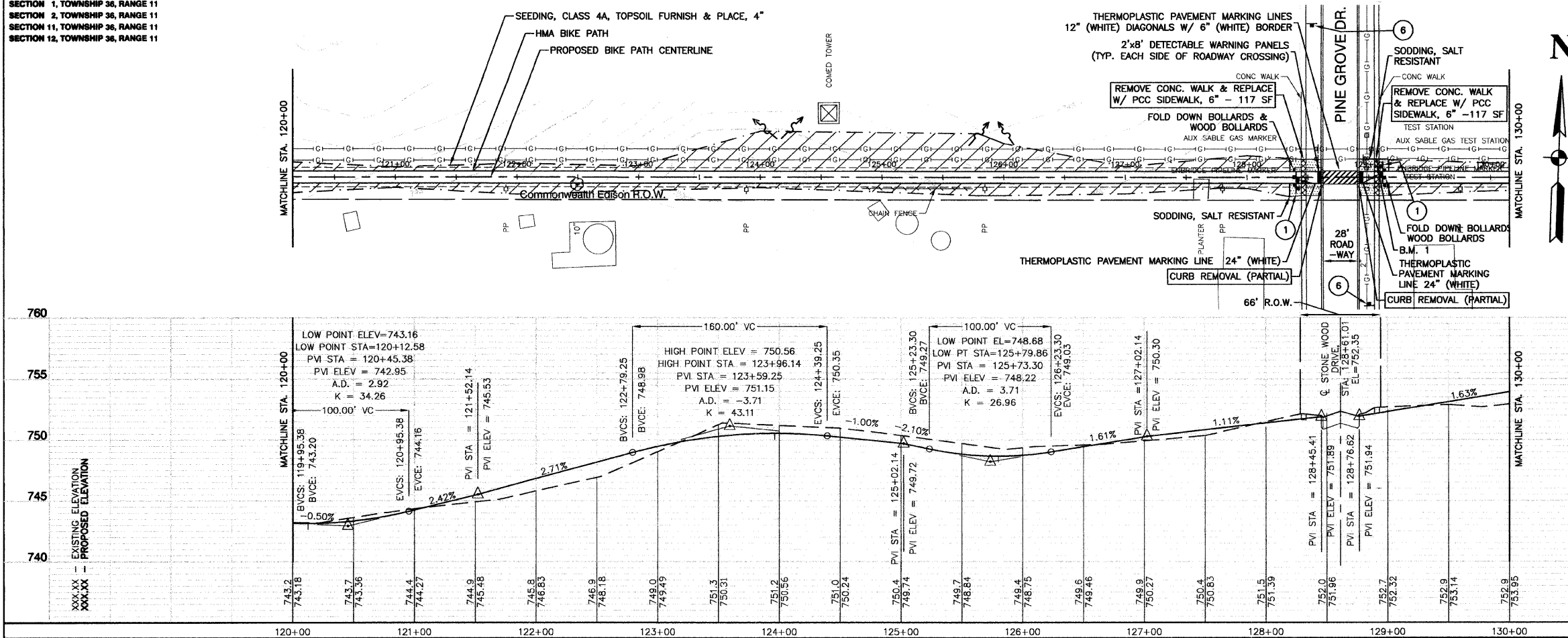
F. A. U. NO.	SECTION	COUNTY	TOTAL SHEETS	SHEET NO.
1600	06-00008-00-BT	WILL	73	14
STA. 120+00		TD STA. 140+00		
FED. ROAD DIST. NO. 1		ILLINOIS	FED. AID PROJECT CMM-0001 (873)	

CONTRACT #63440

**BENCH MARK: 1**  
 CROSS IN CONCRETE SIDEWALK, ON EAST SIDE OF PINE GROVE DRIVE, APPROXIMATELY 400' SOUTH OF OAKWOOD DRIVE INTERSECTION.  
 ELEVATION = 752.66

**BIKE TRAIL SIGN LEGEND:**

1 STOP R1-1 18"x18"	2 W1-1R 18"x18" SLOW 12"x4"	3 W1-1L 18"x18" SLOW 12"x4"	4 END M4-6 6"x4"	5 BIKE ROUTE D11-1 24"x18"	6 W11-1 24"x24"
------------------------------	---	---	---------------------------	-------------------------------------	-----------------------



**LEGEND:**

- [Hatched pattern] SODDING/LIMITS OF GRADING
- [Dotted pattern] SEEDING/LIMITS OF GRADING

REVISIONS		
NO.	NAME	DATE

ILLINOIS DEPARTMENT OF TRANSPORTATION

**HOMER GLEN GMAQ COMMUNITY BIKE TRAIL AND EAST EXTENSION PLAN & PROFILE SHEETS**  
 PARKER Rd. to Bell Rd. STA 120+00 TO STA 140+00

SCALE: VERT. 1"=5'  
 HORIZ. 1"=50'

DATE: FEBRUARY 2, 2010

DRAWN BY: JJB  
 CHECKED BY: BDB

ROBINSON ENGINEERING, LTD.  
 1700 SOUTH PARK AVENUE, SOUTH HOLLAND, ILLINOIS 60473  
 (708) 331-6700 FAX (708) 331-3828  
 ILLINOIS DESIGN FIRM REGISTRATION NO. 154601128