

SECTION 1, TOWNSHIP 36, RANGE 11
 SECTION 2, TOWNSHIP 36, RANGE 11
 SECTION 11, TOWNSHIP 36, RANGE 11
 SECTION 12, TOWNSHIP 36, RANGE 11

F. A. U. NO.	SECTION	COUNTY	TOTAL SHEETS	SHEET NO.
1600	06-00008-00-BT	WILL	73	17
STA. 207+65.46		TO STA. 227+00		
FED. ROAD DIST. NO. 1		ILLINOIS	FED. AID PROJECT CMM-0001 (673)	

CONTRACT #63440

LEGEND:

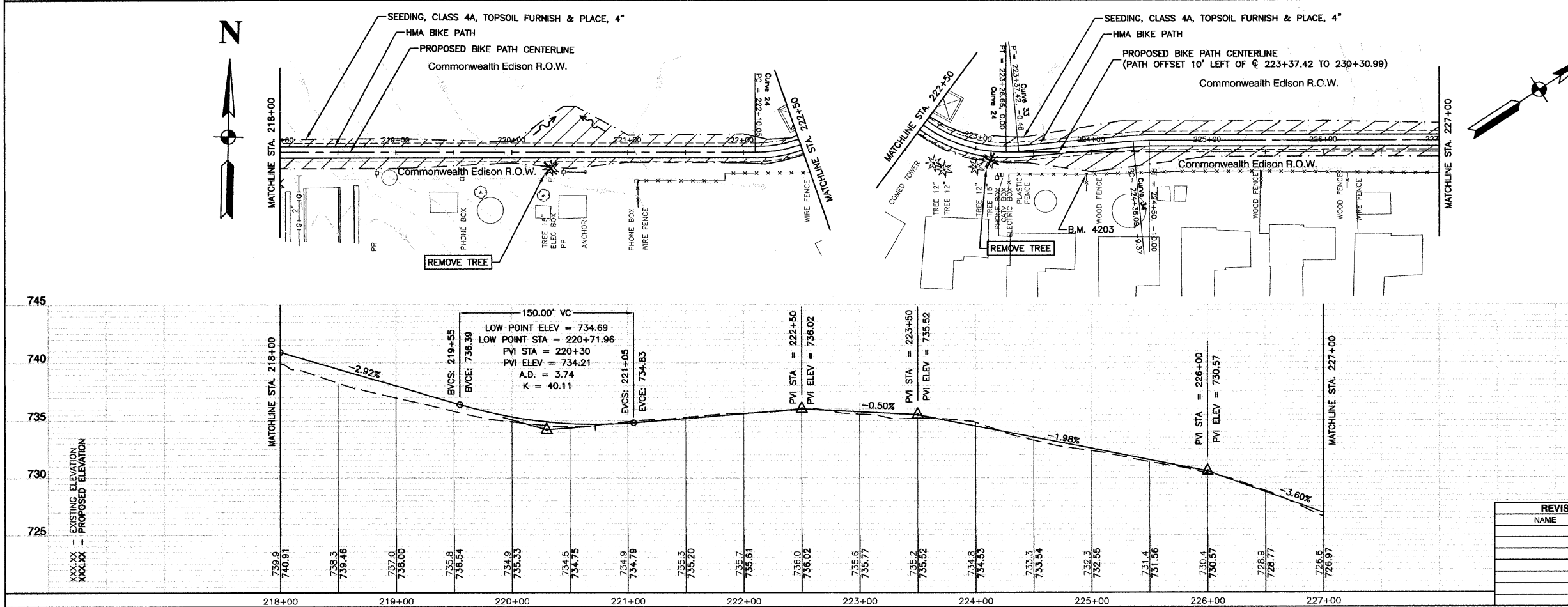
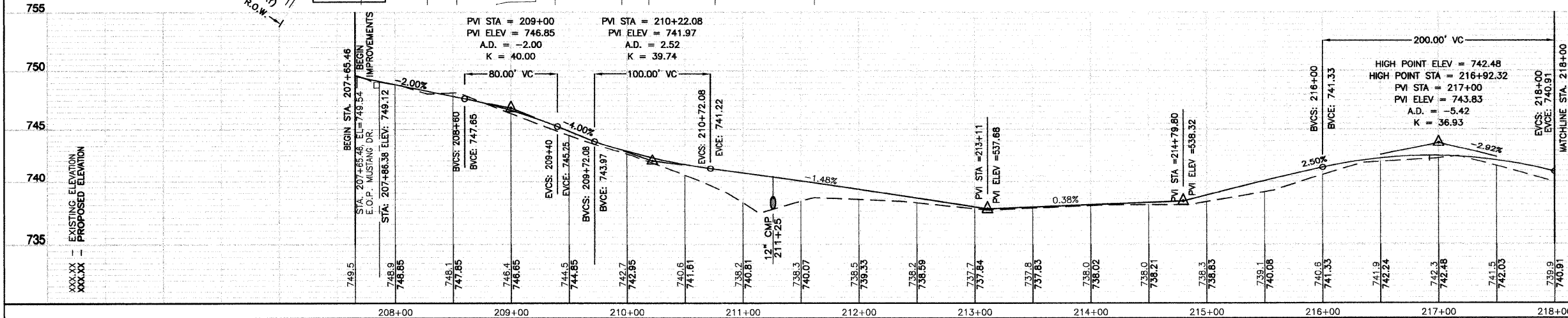
- SODDING/LIMITS OF GRADING
- SEEDING/LIMITS OF GRADING

BENCH MARK: 3011

CROSS IN CONCRETE SIDEWALK ON THE EAST SIDE OF MUSTANG DRIVE, APPROXIMATELY 950' SOUTH OF W. 143RD STREET CENTERLINE AND 274' NORTHEAST OF W. HOLM DRIVE INTERSECTION. ELEVATION = 748.60

BIKE TRAIL SIGN LEGEND:

- 1 STOP R1-1 18"x18"
- 2 W1-1R 18"x18"
- 3 W1-1L 18"x18"
- 4 END M4-6 6"x4"
- 5 SLOW 12"x4"
- 6 BICYCLE ROUTE D11-1 24"x18"



CURVE 33	CURVE 34
PI= STA. 223+32.06	PI= STA. 224+43.06
Δ = 05°08'56"	Δ = 05°08'56"
D = 47'44'47"	D = 36'57'54"
R = 120.00'	R = 155.00'
T = 5.40'	T = 8.97'
L = 10.78'	L = 13.93'
E = 0.12'	E = 0.16'

BENCH MARK: 4203
 IRON PIPE FOUND AT EDGE OF COM-ED EASEMENT, NEAR THE NORTHWEST EASEMENT BEND, LOCATED AT FENCE/PROPERTY LOT LINE, APPROXIMATELY 1550' EAST OF MUSTANG DRIVE CENTERLINE AND 1050' SOUTHWEST OF PHEASANT LANE CENTERLINE, AND 125' NORTHEAST OF COM-ED TOWER. ELEVATION = 735.26

REVISIONS	
NAME	DATE

ILLINOIS DEPARTMENT OF TRANSPORTATION

HOMER GLEN GMAQ COMMUNITY BIKE TRAIL AND EAST EXTENSION PLAN & PROFILE SHEETS
 Mustang Dr. to Venetian Way Sta. 207+65.46 to 227+00

SCALE: VERT. 1"=5'
 SCALE: HORIZ 1"=50'

DATE: FEBRUARY 2, 2010

DRAWN BY: JJB
 CHECKED BY: BDB

ROBINSON ENGINEERING, LTD.
 1700 SOUTH PARK AVENUE SOUTH HOLLAND, ILLINOIS 60473
 (708) 331-4700 FAX (708) 331-3826 ILLINOIS DESIGN FIRM REGISTRATION NO. 194027.02 06231-PLPR-05-P2