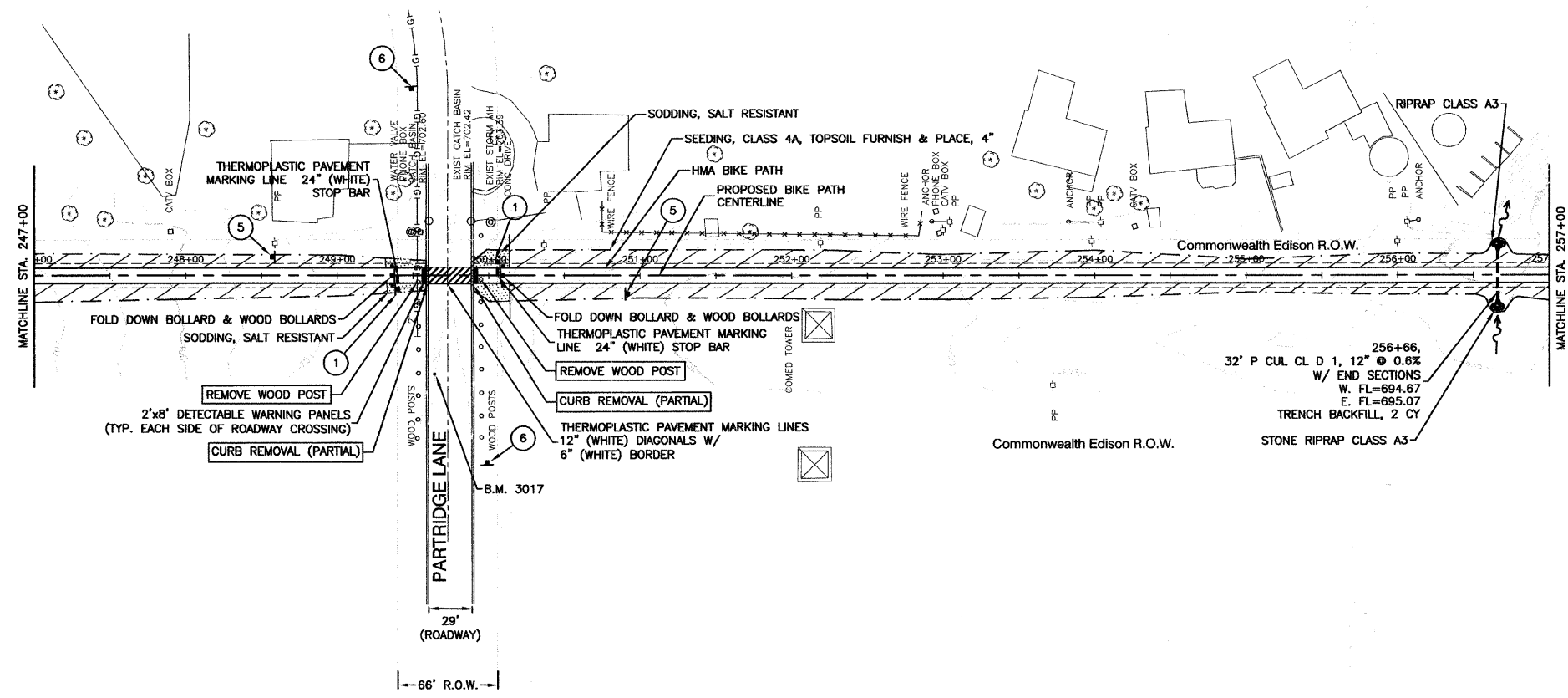
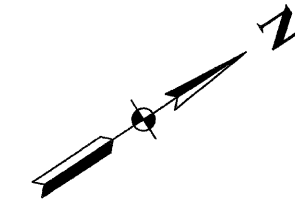


SECTION 1, TOWNSHIP 36, RANGE 11  
 SECTION 2, TOWNSHIP 36, RANGE 11  
 SECTION 11, TOWNSHIP 36, RANGE 11  
 SECTION 12, TOWNSHIP 36, RANGE 11

F. A. U. RITE.	SECTION	COUNTY	TOTAL SHEETS	SHEET NO.
1600	06-00008-00-BT	WILL	73	19
STA. 247+00		TO STA. 257+00		
FED. ROAD DIST. NO. 1	ILLINOIS	FED. AID PROJECT	CMM-0001 (673)	

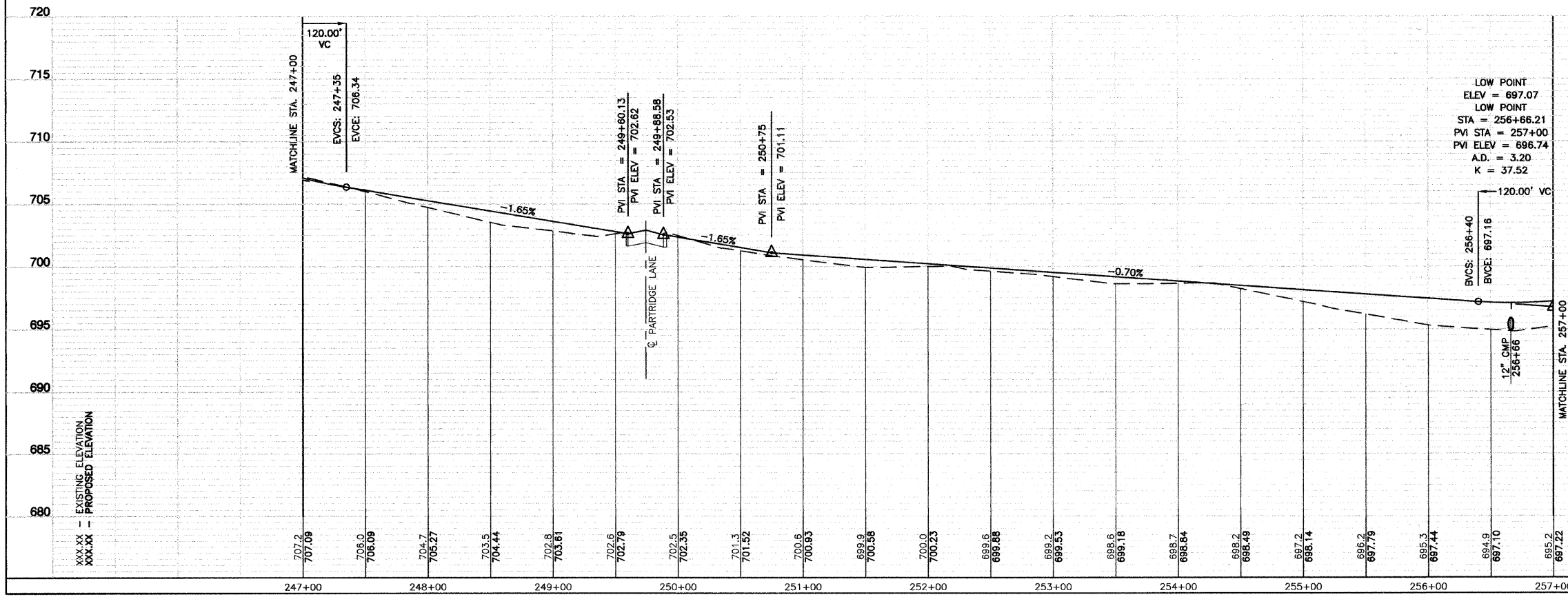
CONTRACT #63440  
 50 0 50  
 SCALE: 1" = 50'



LEGEND:

	SODDING/LIMITS OF GRADING
	SEEDING/LIMITS OF GRADING

**BENCH MARK: 3017**  
 PK NAIL SET IN PAVEMENT ALONG PARTRIDGE LANE, 4' OFF SOUTH EDGE OF PAVEMENT AND APPROXIMATELY 89' EASTERLY OF WEST COM-ED EASEMENT R.O.W. LINE, AND 86' EAST OF WOOD POWER POLE LINE. ELEVATION = 703.10



BIKE TRAIL SIGN LEGEND:

1 STOP R1-1 18"x18"	2 W1-1R 18"x18"	3 W1-1L 18"x18"	4 END M4-6 6"x4"	6 Bicycle symbol W11-1 24"x24"
	5 SLOW 12"x4"	5 SLOW 12"x4"	5 Bicycle symbol D11-1 24"x18"	

REVISIONS

NAME	DATE

ILLINOIS DEPARTMENT OF TRANSPORTATION  
**HOMER GLEN GMAQ COMMUNITY BIKE TRAIL AND EAST EXTENSION**  
**PLAN & PROFILE SHEETS**  
 Mustang Dr. to Venetian Way Sta 247+00 to Sta 257+00  
 SCALE: VERT. 1"=5'  
 HORIZ. 1"=50'  
 DATE: FEBRUARY 2, 2010  
 DRAWN BY: JJB  
 CHECKED BY: BDB