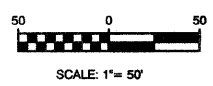
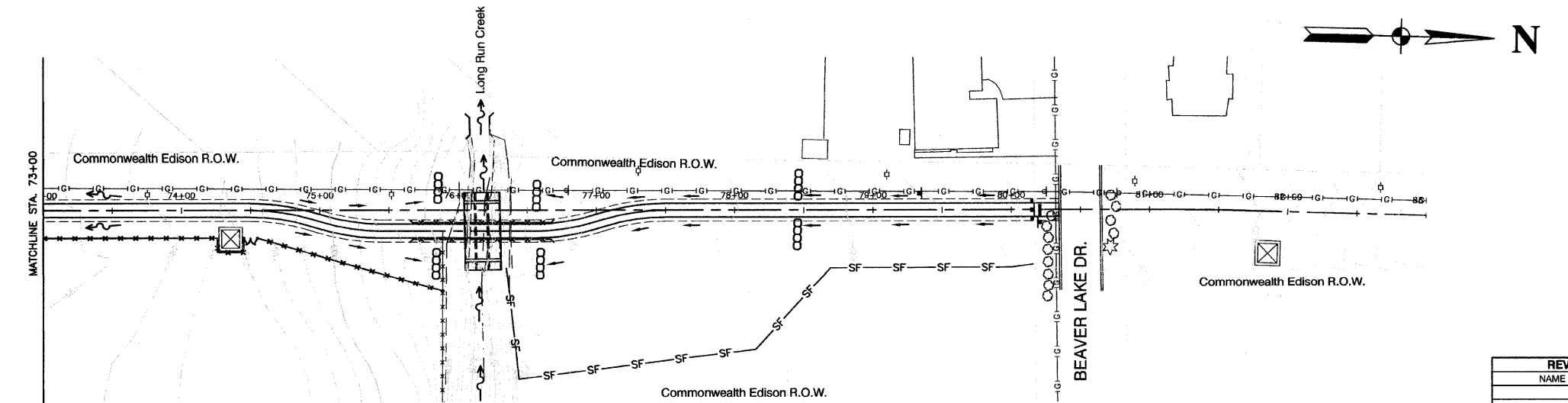
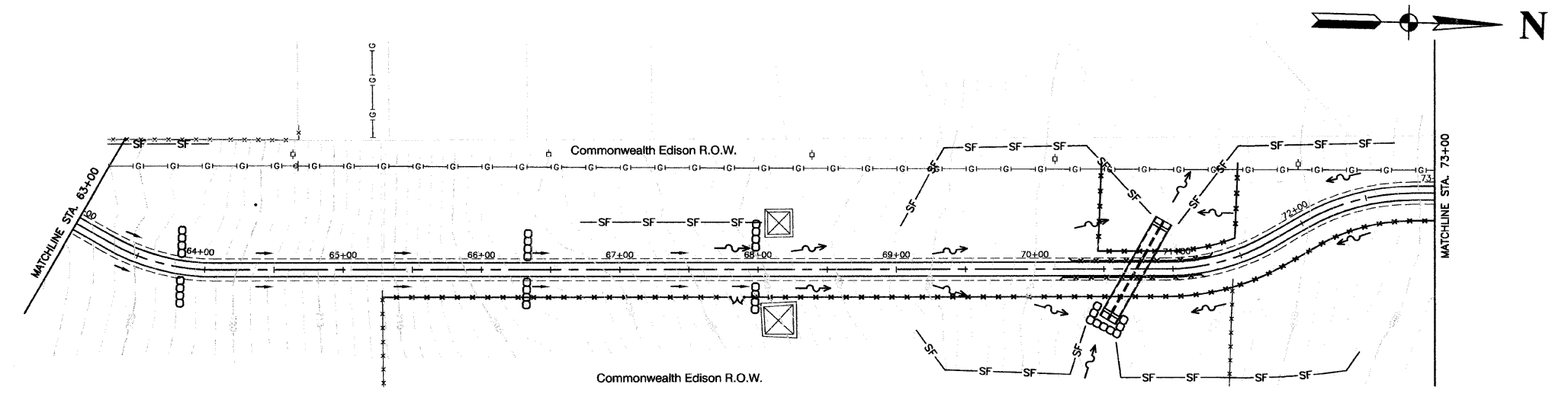
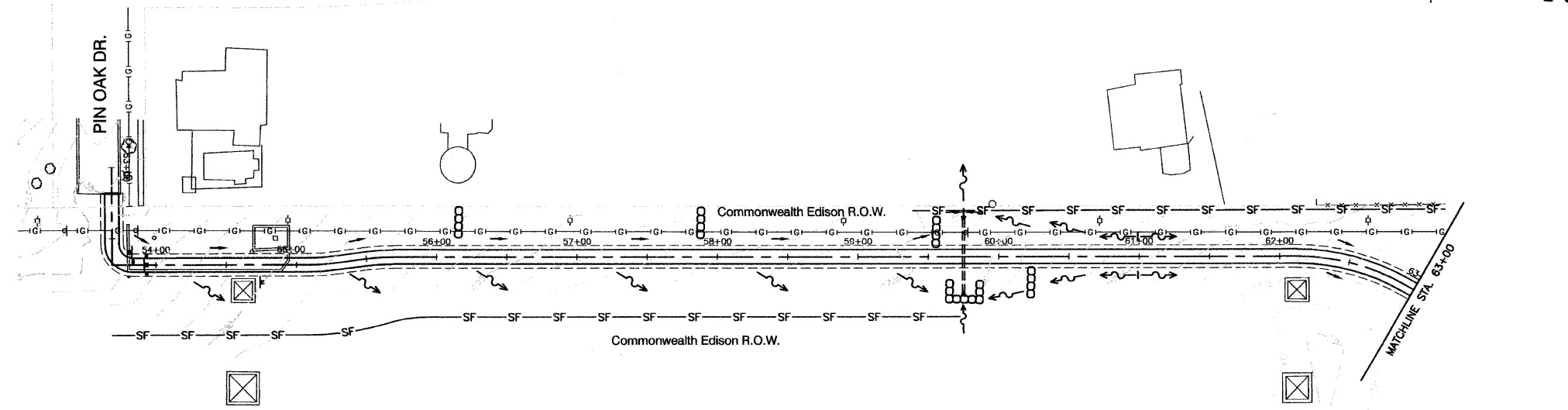


SECTION 1, TOWNSHIP 36, RANGE 11
 SECTION 2, TOWNSHIP 36, RANGE 11
 SECTION 11, TOWNSHIP 36, RANGE 11
 SECTION 12, TOWNSHIP 36, RANGE 11

F. A. U. NO.	SECTION	COUNTY	TOTAL SHEETS	SHEET NO.
1800	06-00008-00-BT	WILL	73	36
STA.	TO STA.			
FED. ROAD DIST. NO. 1	ILLINOIS	FED. AID PROJECT	0MM-0001 (873)	

CONTRACT #63440



KEY	ITEM NAME
—SF—	PERIMETER EROSION BARRIER TO BE PLACED AS DIRECTED
~>	FLOW DIRECTION
->	DITCH FLOW DIRECTION
—+—	FLOW DIRECTION LOW POINT
—+—	FLOW DIRECTION HIGH POINT
⊠	INLET AND PIPE PROTECTION
○○○○	TEMPORARY DITCH CHECKS
⊞	RIPRAP (SEE PLAN SHEETS)

REVISIONS	
NAME	DATE

ILLINOIS DEPARTMENT OF TRANSPORTATION
**HOMER GLEN GMAO COMMUNITY BIKE TRAIL
 AND EAST EXTENSION
 EROSION CONTROL PLAN
 Pin Oak Drive North to Beaver Lake Drive**
 SCALE: VERT. N/A
 HORIZ. 1"=50'
 DATE: FEBRUARY 2, 2010
 DRAWN BY: JJB
 CHECKED BY: BDB