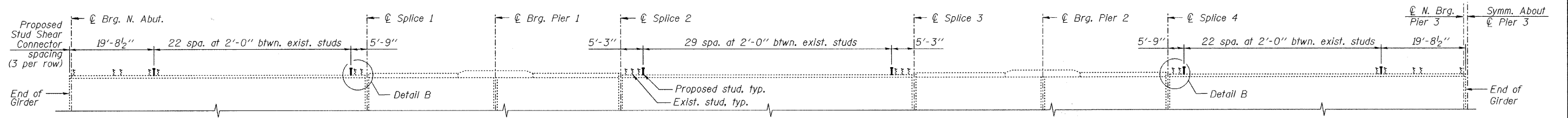
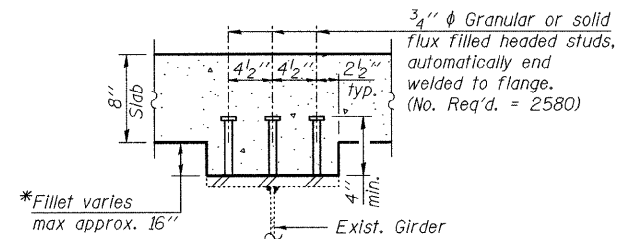


STATE OF ILLINOIS  
DEPARTMENT OF TRANSPORTATION

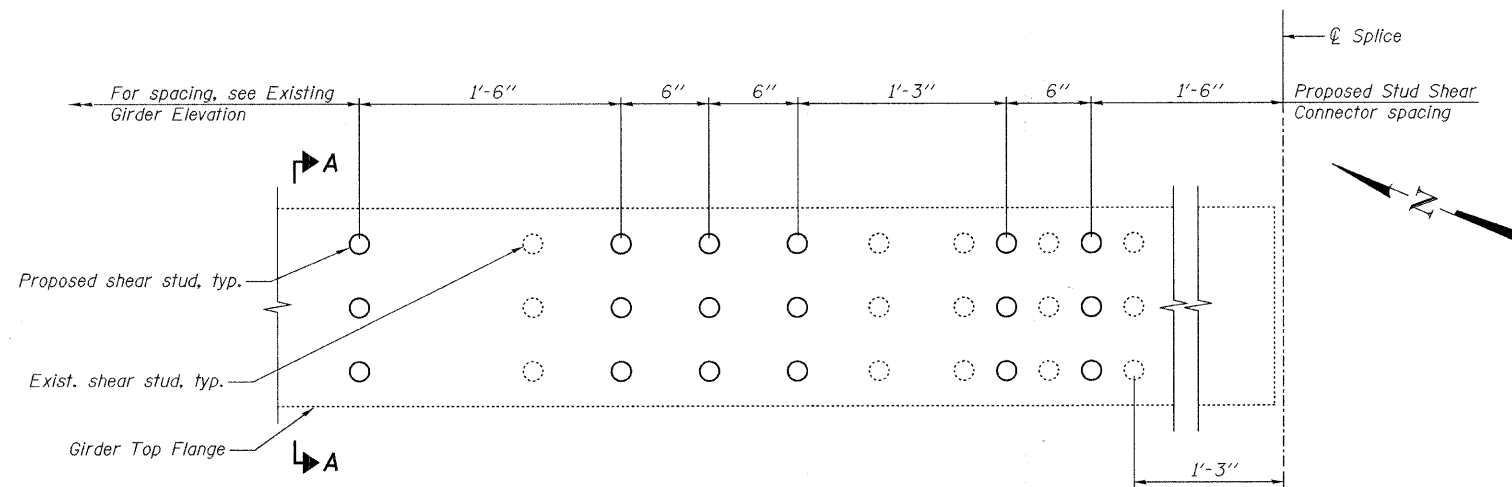


**EXISTING GIRDER ELEVATION**



**SECTION A-A**

\* Fillet reinforcement required along entire span.  
See sheet S18 for Fillet Reinforcement Detail.



**DETAIL B**

Near Splice 1 & 5 shown,  
Near Splice 4 & 8 opposite hand

**NOTES:**

1. See existing plan information for existing stud layout and dimensions.
2. Extreme care shall be taken when removing the deck to preserve the existing studs. See special provision for "Removal of Existing Concrete Deck."

|            |     |
|------------|-----|
| DESIGNED - | JLS |
| CHECKED -  | KWS |
| DRAWN -    | MB  |
| CHECKED -  | MRB |

**benesch**

alfred benesch & company  
Engineers • Surveyors • Planners  
205 North Michigan Avenue, Suite 2400  
Chicago, Illinois 60601  
312-295-0450 Job No. 3808.02

**STRUCTURAL STEEL REPAIRS 2 OF 2  
STRUCTURE NO. 099-3298**

|                     |                    |                |                  |              |           |
|---------------------|--------------------|----------------|------------------|--------------|-----------|
| SHEET NO. S24       | F.A.U. RTE.        | SECTION        | COUNTY           | TOTAL SHEETS | SHEET NO. |
|                     | 341                | 04-00090-07-BR | WILL             | 57           | 32        |
| S47 SHEETS          | CONTRACT NO. 63442 |                |                  |              |           |
| FED. ROAD DIST. NO. |                    | ILLINOIS       | FED. AID PROJECT |              |           |