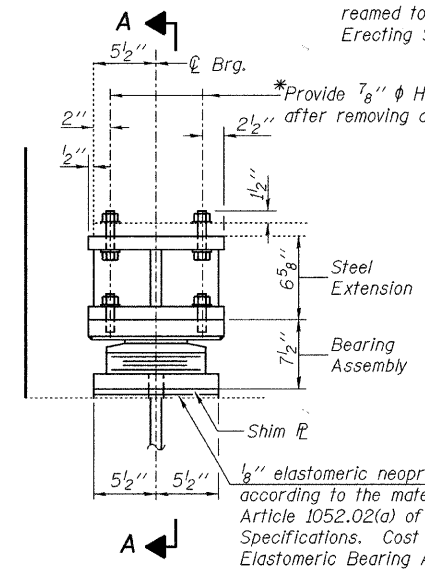


STATE OF ILLINOIS
DEPARTMENT OF TRANSPORTATION

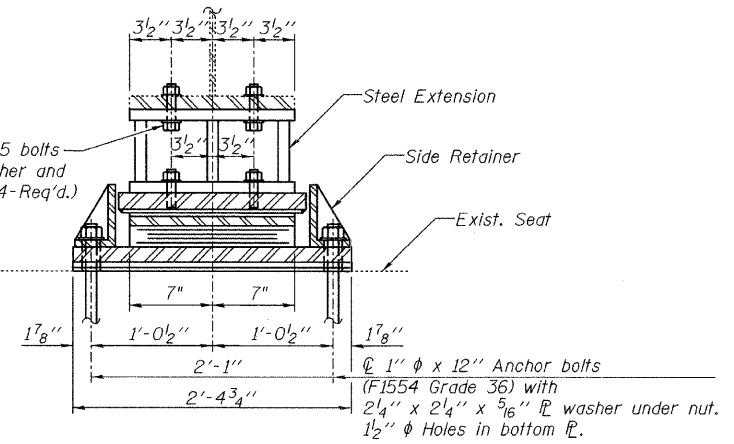
*Holes shall be subpunched or subdrilled $\frac{3}{4}$ " diameter and reamed to $\frac{7}{8}$ " diameter. Cost included with Furnishing and Erecting Structural Steel.

*Provide $\frac{7}{8}$ " ϕ Holes in Exist. Bott. Flange after removing attached bearing plate.

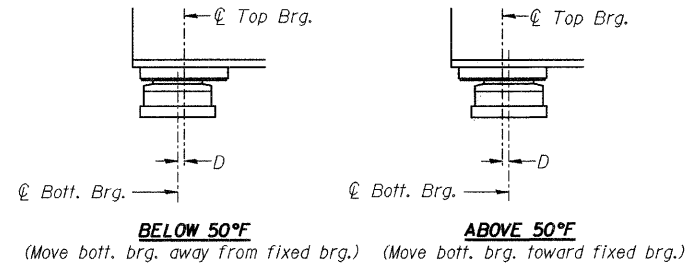


ELEVATION AT ABUT.

TYPE II ELASTOMERIC EXP. BRG.

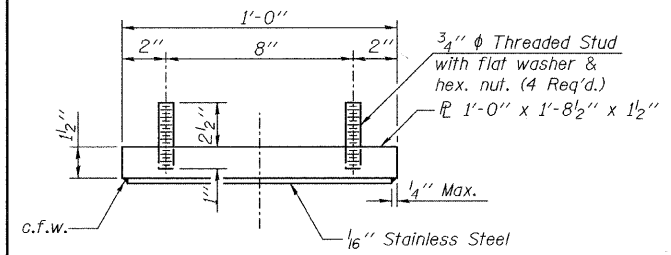


SECTION A-A

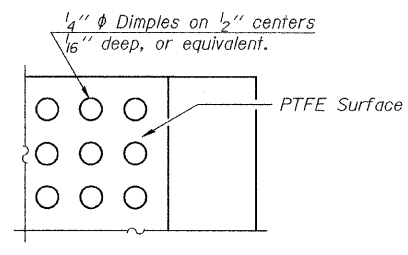


SETTING ANCHOR BOLTS AT EXP. BRG.
(D= $\frac{1}{8}$ " per each 100' of expansion for every 15° temp. change from the normal temp. of 50°F.)

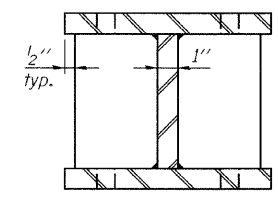
- NOTES:**
- Anchor bolts shall be ASTM F1554 all-thread (or an Engineer-approved alternate material) of the grade(s) and diameter(s) specified. ASTM A307 Grade C anchor bolts may be used in lieu of ASTM F1554 Grade 36 (Fy=36ksi). The corresponding specified grade of AASHTO M314 anchor bolts may be used in lieu of ASTM F1554.
 - Anchor bolts for Type II bearings shall be placed in holes drilled in the concrete through holes in the bottom bearing plate after members are in place. Side retainers shall be placed after bolts are installed.
 - Drilled and set anchor bolts shall be installed according to Article 521.06 of the Standard Specifications.
 - Side retainers and other steel members required for the bearing assembly shall be included in the cost of Elastomeric Bearing Assembly, Type II.
 - The $\frac{1}{8}$ " PTFE sheet shall be bonded directly to the top steel plate with a two-component, medium viscosity epoxy resin, conforming to the requirements of the Federal Specification MMM-A-134, Type I. The bond agent shall be applied on the full area of the contact surfaces.
 - Bonding of $\frac{1}{8}$ " PTFE sheet during vulcanizing process will be permitted provided the process and method of adjusting assembly height is approved by the Engineer.
 - The structural steel plates of the Bearing Assembly and Steel Extension shall conform to the requirements of AASHTO M 270 Grade 50.
 - Two $\frac{1}{8}$ in. adjusting shims shall be provided for each bearing in addition to all other plates or shims and placed as shown on bearing details.
 - The anchor bolt size and grades shown constitute a calculated seismic structural fuse. Substitution of higher diameter and/or grade anchor bolts will not be allowed.
 - Prior to ordering any material, the Contractor shall verify in the field all bearing height and shim thickness dimensions.



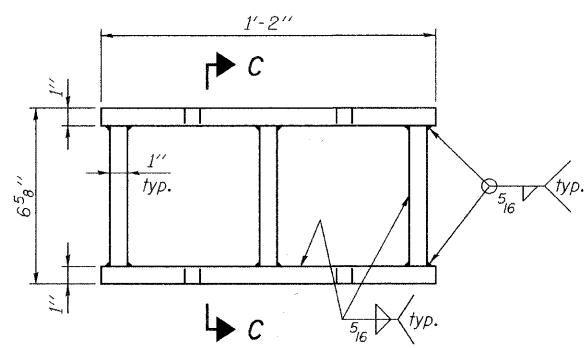
TOP BEARING ASSEMBLY



PLAN-PTFE SURFACE

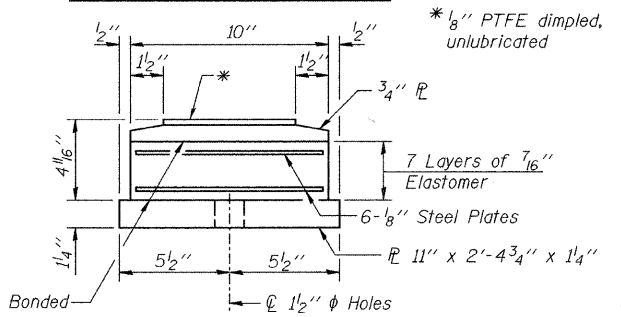


SECTION C-C

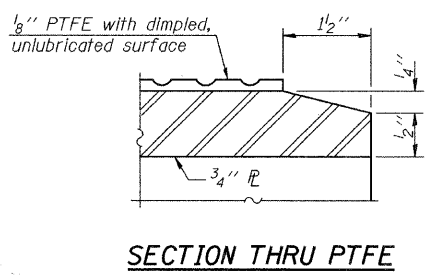


ELEVATION STEEL EXTENSION

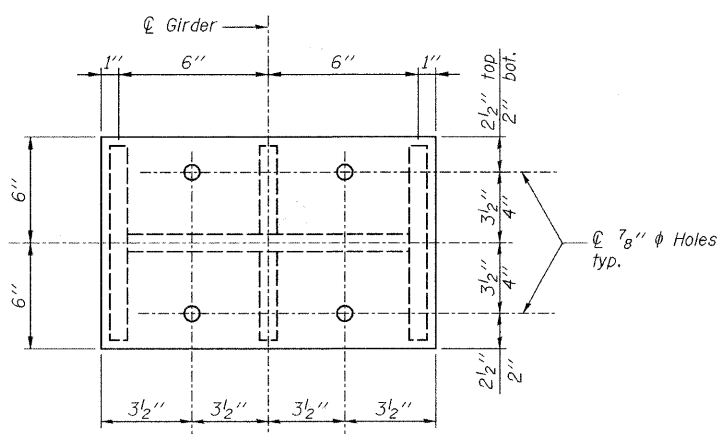
(Weight included with Furnishing and Erecting Structural Steel.)



BOTTOM BEARING ASSEMBLY



SECTION THRU PTFE

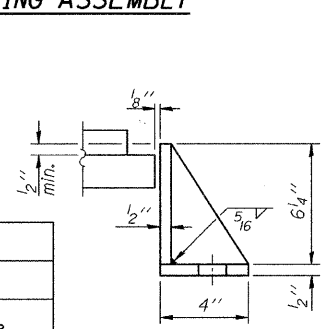


PLAN STEEL EXTENSION

BILL OF MATERIAL

Item	Unit	Total
Elastomeric Bearing Assembly, Type II	Each	10
Anchor Bolts, 1"	Each	20

DESIGNED -	JLS
CHECKED -	KWS
DRAWN -	VH/MB
CHECKED -	MRB



SIDE RETAINER

(Equivalent rolled angle with stiffeners will be allowed in lieu of welded plates.)

benesch
alfred benesch & company
Engineers - Surveyors - Planners
205 North Michigan Avenue, Suite 2400
Chicago, Illinois 60601
312-565-0450 Job No. 3808.02

SHEET NO. S26	F.A.U. RTE.	SECTION	COUNTY	TOTAL SHEETS	SHEET NO.
S47 SHEETS	341	04-00090-07-BR	WILL	57	34
FED. ROAD DIST. NO.			ILLINOIS FED. AID PROJECT		
CONTRACT NO. 63442					

BEARING DETAILS 2 OF 2
STRUCTURE NO. 099-3298

x:\38008\3808.02\engineer\ng-documents\phase.11\brandon_road_brdge\line\0993298-63442-026-br-2.dgn 10:04:11 AM 1/22/2010