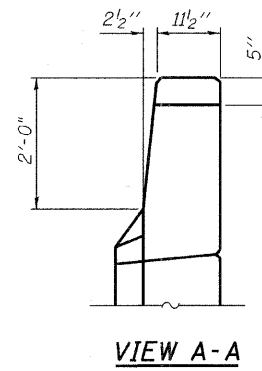
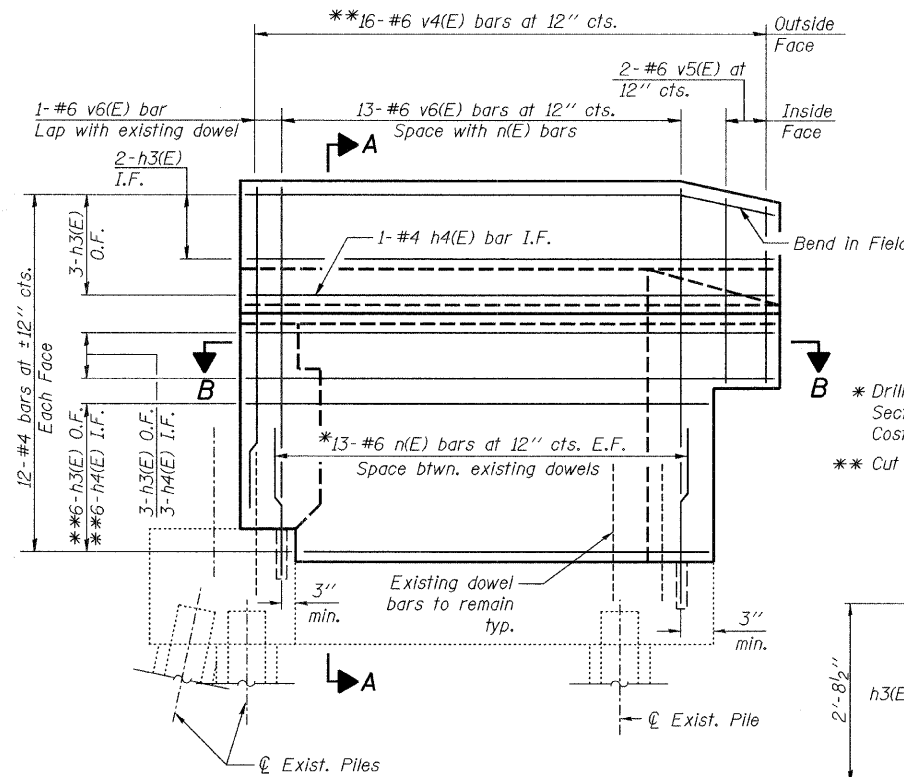
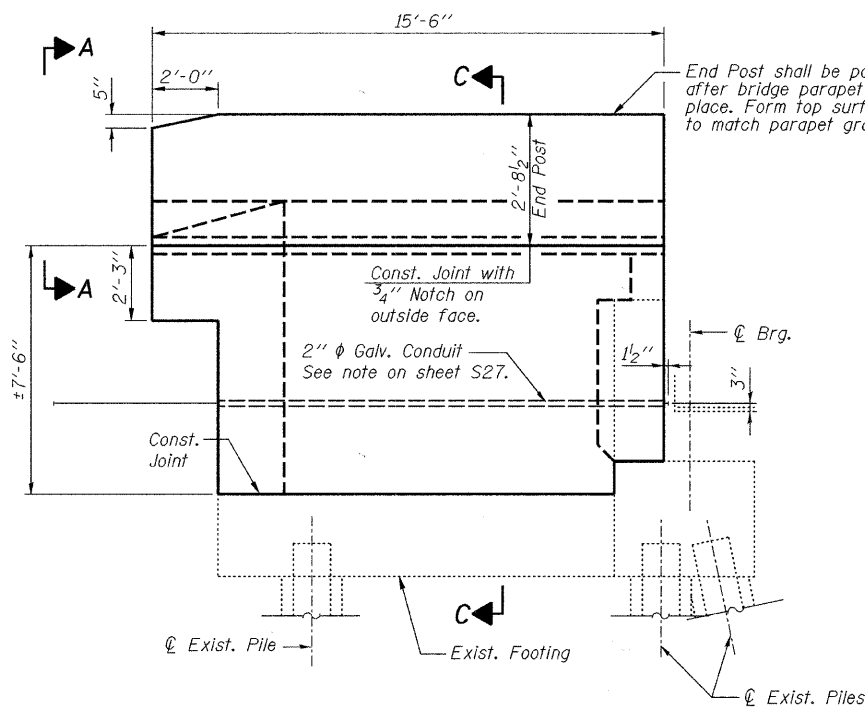


STATE OF ILLINOIS
DEPARTMENT OF TRANSPORTATION

TWO ABUTMENTS
BILL OF MATERIAL

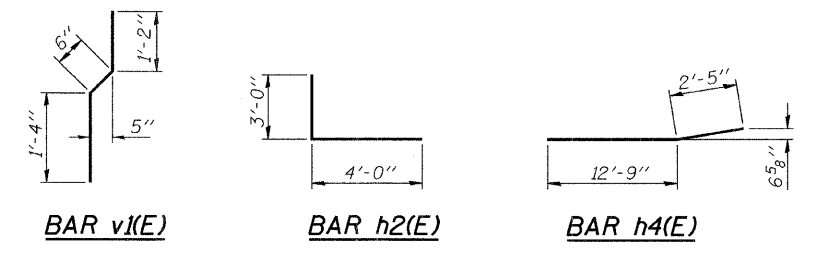
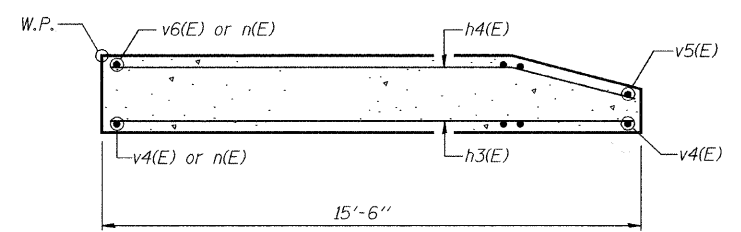
Bar	No.	Size	Length	Shape
h(E)	24	#5	29'-8"	
h1(E)	10	#6	29'-8"	
h2(E)	64	#5	7'-0"	
h3(E)	56	#4	15'-2"	
h4(E)	40	#4	15'-2"	
n(E)	228	#6	4'-6"	
v(E)	62	#5	2'-8"	
v1(E)	62	#4	3'-0"	
v2(E)	62	#6	6'-0"	
v3(E)	62	#6	5'-10"	
v4(E)	64	#6	11'-2"	
v5(E)	8	#6	4'-7"	
v6(E)	56	#6	9'-10"	

Structure Excavation	Cu. Yd.	156
Concrete Structures	Cu. Yd.	47.0
Reinforcement Bars, Epoxy Coated	Pound	7,530
Concrete Sealer	Sq. Ft.	563
Epoxy Crack Injection	Foot	40
Structural Repair of Concrete (Depth Greater Than 5 Inches)	Sq. Ft.	10
Structural Repair of Concrete (Depth Equal to or Less Than 5 Inches)	Sq. Ft.	19

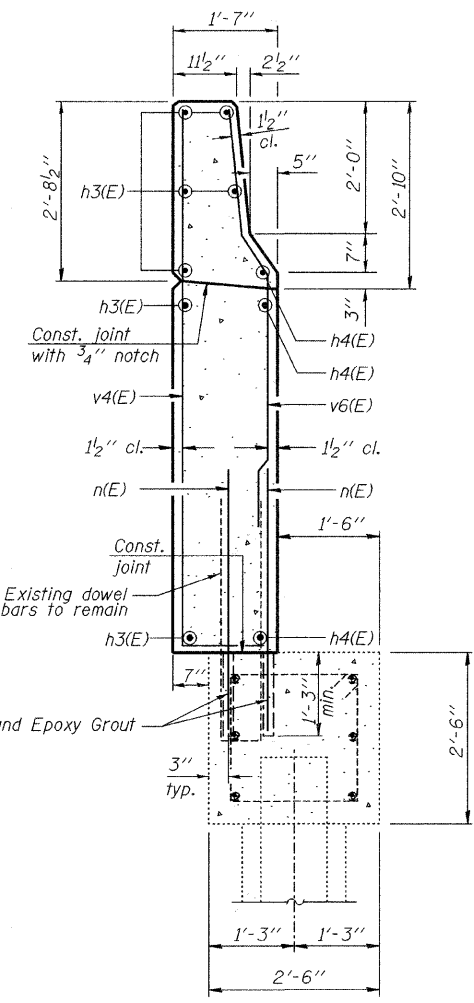


WINGWALL ELEVATION (Showing Dimensions)

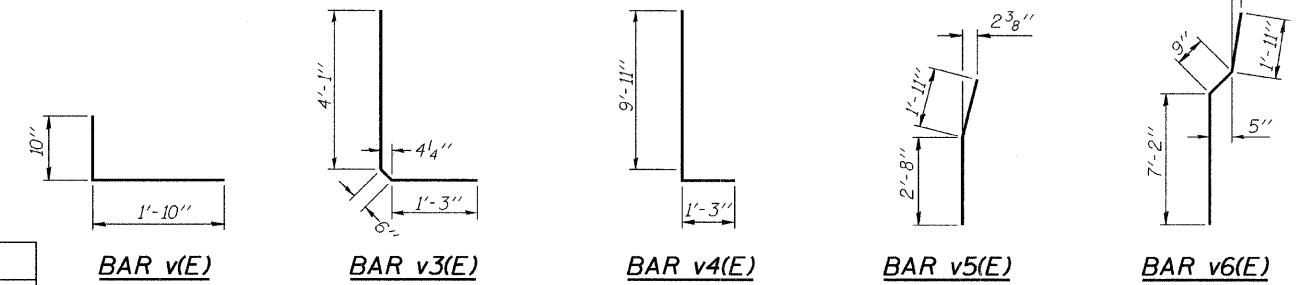
WINGWALL ELEVATION (Showing Reinforcement)



SECTION B-B



SECTION C-C



- NOTES:**
- Hatched area to be poured after superstructure forms have been removed. Quantity of concrete included with Concrete Superstructure on sheet S17.
 - Quantity of concrete in end post included with Concrete Superstructure on sheet S20.
 - For details of Bar Splicers, see sheet S34.
 - I.F. indicates inside face
O.F. indicates outside face
E.F. indicates each face
F.F. indicates front face
B.F. indicates back face
 - Existing reinforcement shall be cleaned and incorporated into the new construction. Cost included with Concrete Removal.
 - The quantities shown are for estimating purposes only. The area to be repaired shall be determined by the Engineer at the time of construction. Actual repair locations shall be shown on the as-built plans.

MINIMUM BAR LAP

#5 bar = 2'-6"
#6 bar = 3'-1"

**ABUTMENT DETAILS 2 OF 3
STRUCTURE NO. 099-3298**

DESIGNED -	JLS
CHECKED -	KWS/EFS
DRAWN -	VH/MB
CHECKED -	KWS

benesch
alfred benesch & company
Engineers - Surveyors - Planners
205 North Michigan Avenue, Suite 2400
Chicago, Illinois 60601
312-565-0450 Job No. 3808.02

SHEET NO. S28	F.A.U. RTE.	SECTION	COUNTY	TOTAL SHEETS	SHEET NO.
S47 SHEETS	341	04-00090-07-BR	WILL	57	36
FED. ROAD DIST. NO.			ILLINOIS FED. AID PROJECT		
			CONTRACT NO. 63442		

x:\3808\3808.02\engineering\ng_documents\phase.11\brandon_road_bridg\0993298-63442-028-abut2.dgn 1/22/2010 10:04:14 AM