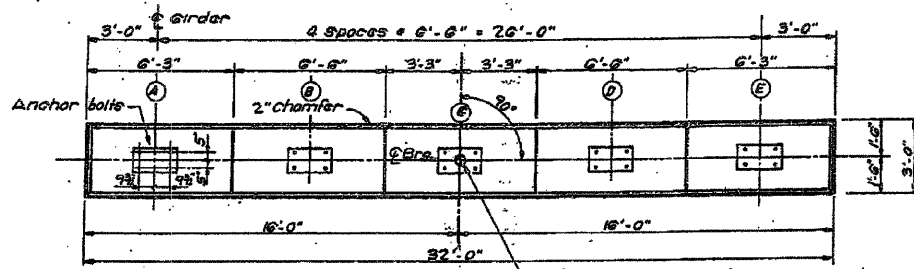


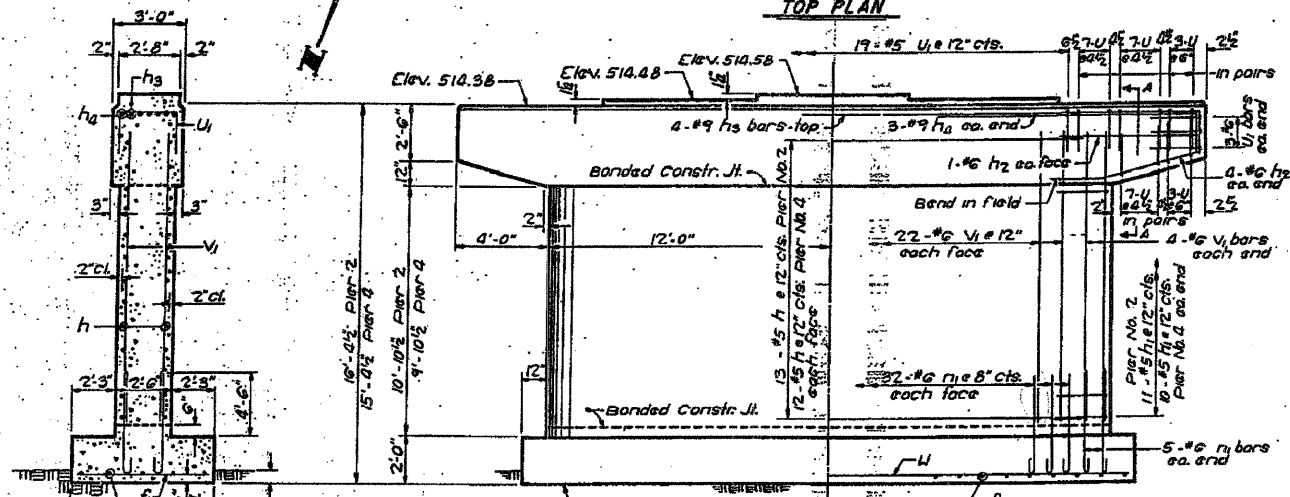
STATE OF ILLINOIS
DEPARTMENT OF TRANSPORTATION

SECTION 02B-2-MFT	ROUTE No. G.M.42	SHEET 19 OF 2
COUNTY Will	ROAD DISTRICT	



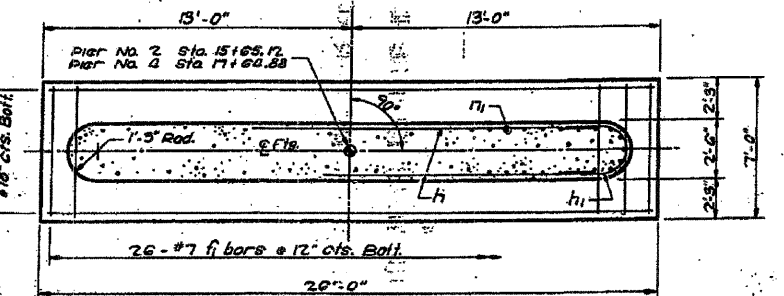
TOP PLAN

GENERAL NOTES:
 Space reinforcement in cap to miss anchor bars.
 Minimum bar laps 2d bar diameter unless otherwise noted.
 All exposed edges shall have standard chamfers except as noted.
 Pour steps monolithically with cap.

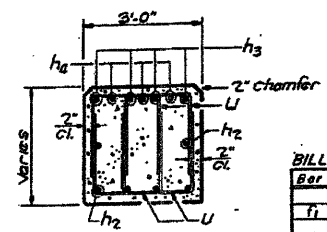


ELEVATION

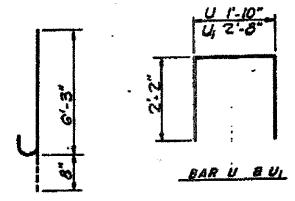
SECTION THRU PIER



FOOTING PLAN



SECTION A-A



BAR U & V

BAR W

BAR H1

BAR H2

BAR H3

BAR H4

BILL OF MATERIAL - PIERS 2 & 4

Bar No.	Size	Length	Shape
h1	#7	6'-9"	
h2	#5	21'-6"	
h3	#5	7'-2"	
h4	#6	6'-0"	
h5	#9	35'-8"	
h6	#9	15'-0"	
U	#5	6'-2"	U
V	#5	7'-0"	U
W	#5	75'-8"	U

Class X Concrete cu. yd. 926
 Reinforcement Bars lbs. 9290
 Rock Excavation cu. yd. 170
 Containment Excavation cu. yd. 714

PIERS 2 AND 4
 BRANDON ROAD BRIDGE
 OVER DES PLAINES RIVER
 SEC. 82B-2-MFT G.M. NO. 02
 WILL COUNTY

Designed	Drawn	Checked	Approved	Revised

Max. comp. soil pressure = 8200 #/s.f.

DESIGNED -	JLS
CHECKED -	MRB
DRAWN -	VH
CHECKED -	MRB

FOR INFORMATION ONLY

benesch
 alfred benesch & company
 Engineers - Surveyors - Planners
 205 North Michigan Avenue, Suite 2400
 Chicago, Illinois 60601
 312-665-0450 Job No. 3808.02

SHEET NO. S46	F.A.U. RTE.	SECTION	COUNTY	TOTAL SHEETS	SHEET NO.
	341	04-00090-07-BR	WILL	57	54
S47 SHEETS	CONTRACT NO. 63442				
FED. ROAD DIST. NO.		ILLINOIS		FED. AID PROJECT	

EXISTING PLAN INFORMATION
 STRUCTURE NO. 099-3298

x:\3808\3808.02\engineering\documents\phase.11\brandon_road_bridge\ina\0993298-63442-046-exst11.dgn
 1/22/2010 11:11:36 AM