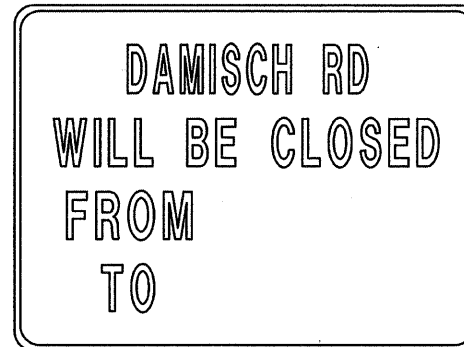
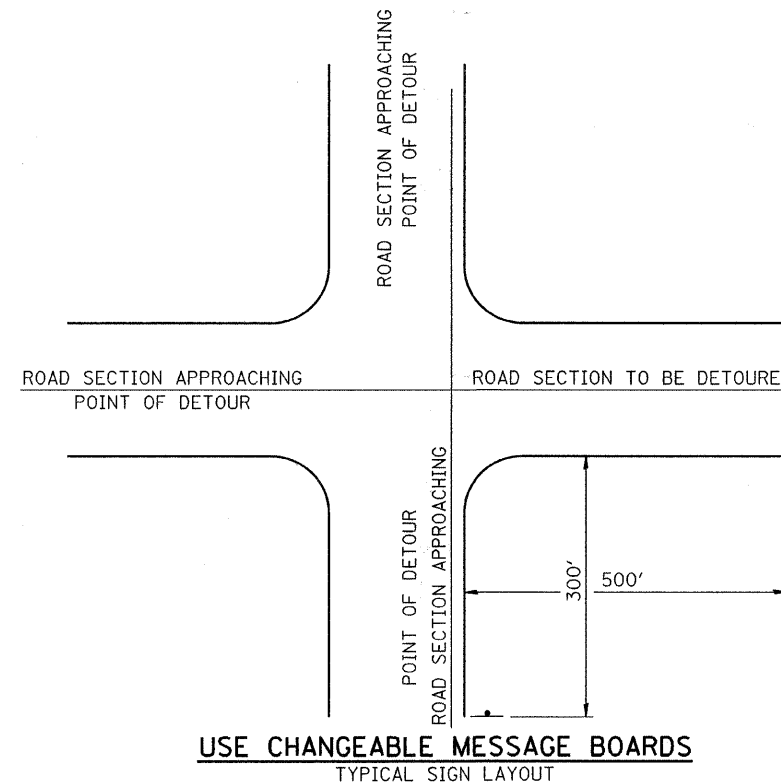


DETOUR GENERAL NOTES

1. ALL SIGNING SHALL BE IN ACCORDANCE WITH THE APPLICABLE PROVISIONS OF THE STATE OF ILLINOIS "STANDARD SPECIFICATIONS FOR ROAD AND BRIDGE CONSTRUCTION ADOPTED JAN. 1, 2007", "THE QUALITY STANDARD FOR WORK ZONE TRAFFIC CONTROL DEVICES ADOPTED 1990", THE DETAILS IN THESE PLANS, AND THE LATEST EDITION OF THE STATE OF ILLINOIS "MANUAL OF UNIFORM TRAFFIC CONTROL DEVICES", THE SPECIAL PROVISIONS FOR TRAFFIC CONTROL AND PROTECTION.
2. THE DURATION OF THE DETOUR SHALL NOT EXCEED 60 CALENDAR DAYS OR AUGUST 1, 2009 . THE CONTRACTOR SHALL SCHEDULE ALL WORK IN AN EXPEDIENT MANNER TO REDUCE THE LENGTH OF TIME THAT THE DETOUR NEEDS TO BE IN EFFECT.
3. THE ENGINEER SHALL BE NOTIFIED IN WRITING AT LEAST THREE WEEKS PRIOR TO THE DAY THE DETOUR IS TO BE IN EFFECT. THE ENGINEER WILL CONTACT THE APPROPRIATE LOCAL AGENCIES AND INTERESTED PARTIES FOR APPROVAL OF SUCH DATE.
4. IF DEEMED NECESSARY BY THE ENGINEER A PRE-CONSTRUCTION MEETING WITH THE CONTRACTOR SHALL BE HELD AT LEAST TWO WEEKS PRIOR TO THE DAY THE DETOUR IS TO BE IN EFFECT.
5. THE CONTRACTOR SHALL SUPPLY TO THE ENGINEER THE NAMES AND TELEPHONE NUMBERS OF HIS REPRESENTATIVES ON THE CONSTRUCTION SITE AND HIS REPRESENTATIVE RESPONSIBLE FOR THE DETOUR SIGNING PRIOR TO THE START OF THE WORK. THE KANE COUNTY HIGHWAY DEPARTMENT REPRESENTATIVE FOR THE DETOUR IS:

DAVID BOESCH
KANE COUNTY DEPARTMENT OF TRANSPORTATION
TRAFFIC ENGINEERING SECTION
41W011 BURLINGTON ROAD
ST. CHARLES, ILLINOIS 60175
(630) 584-1170

6. IF REQUESTED BY THE CONTRACTOR IN WRITING AT LEAST THREE WEEKS PRIOR TO THE DAY THE DETOUR IS TO BE IN EFFECT THE ENGINEER WILL FIELD LOCATE THE POSITIONS OF ANY SIGNS.
7. LONGITUDINAL DIMENSIONS SHOWN ON THESE PLANS MAY BE ADJUSTED TO FIT FIELD CONDITIONS.
8. THE ROAD SHALL NOT BE CLOSED UNTIL ALL SIGNING IS ERECTED IN ACCORDANCE WITH THE DETOUR PLAN AND INSPECTED AND APPROVED BY THE ENGINEER.
9. THE CONTRACTOR SHALL BE RESPONSIBLE FOR ENSURING THAT ALL BARRICADES, SIGNS, LIGHTS, AND OTHER DEVICES INSTALLED BY HIM ARE IN PLACE AND OPERATING 24 HOURS EACH DAY INCLUDING SUNDAYS AND HOLIDAYS DURING THE TIME THE DETOUR IS IN EFFECT.
10. THE TRAFFIC CONTROL SHOWN ON THE DETOUR PLAN IS THE MINIMUM NECESSARY TO ENSURE THIS ROAD CLOSURE. THE CONTRACTOR SHALL MAKE ALL CHANGES IN TRAFFIC CONTROL THAT ARE DEEMED NECESSARY BY THE ENGINEER. ADDITIONS AND DELETIONS OF TRAFFIC CONTROL FOR THIS DETOUR SHALL BE CONSIDERED INCLUDED IN THE PAY ITEM "TRAFFIC CONTROL AND PROTECTION FOR TEMPORARY DETOUR".
11. ALL EXISTING SIGNING THAT IS NOT APPLICABLE WHILE THE DETOUR IS IN EFFECT SHALL BE COMPLETELY COVERED BY THE CONTRACTOR, IN A MANNER APPROVED BY THE ENGINEER.
12. ALL DETOUR SIGNING SHALL BE POST MOUNTED.
13. ALL DETOUR SIGNING EXCEPT REGULATORY SIGNS SHALL HAVE BLACK LEGENDS ON FLUORESCENT ORANGE SHEETING AND STANDARD BLACK BORDERS. THE FLUORESCENT ORANGE REFLECTIVE SHEETING SHALL MEET THE REQUIREMENTS OF ARTICLE 1084.02 OF THE STANDARD SPECIFICATIONS. ALL DETOUR SIGNING SHALL BE NEW OR LIKE NEW CONDITION. THE ENGINEER SHALL BE THE SOLE JUDGE OF THE CONDITION AND ACCEPTANCE OF THE SIGNS.
14. THE SIZES OF ALL SIGNS NOT SPECIFIED IN THESE PLANS SHALL BE AS REQUIRED BY THE ILLINOIS MANUAL OF UNIFORM TRAFFIC CONTROL DEVICES.
15. AS A MINIMUM, ALL AMBER FLASHING LIGHTS THAT ARE REQUIRED FOR THIS DETOUR SHALL MEET THE REQUIREMENTS FOR TYPE A-LOW INTENSITY FLASHING LIGHTS IN ARTICLE 1084.01 OF THE STANDARD SPECIFICATIONS. ALL LIGHTS SHALL OPERATE DURING THE HOURS OF DARKNESS. ONLY LIGHTS THAT HAVE BEEN APPROVED BY THE ILLINOIS DEPARTMENT OF TRANSPORTATION SHALL BE USED.
16. THE MINIMUM DIMENSIONS OF THE ORANGE WARNING FLAGS SHOWN IN THE PLANS ARE 18" BY 18".
17. ALL BARRICADES SHALL HAVE REFLECTORIZED STRIPING ON BOTH SIDES OF THE BARRICADES. THE TYPE III BARRICADES USED AT THE POINT OF CLOSURE TO THRU TRAFFIC SHALL NOT EXCEED 8'-0" IN WIDTH EACH, FOR A SINGLE APPROACH LANE.
18. THE "ROAD CLOSED" (R11-2), THE "ROAD CLOSED XX MILES AHEAD LOCAL TRAFFIC ONLY" (R11-3), AND THE "ROAD CLOSED TO THRU TRAFFIC" (R11-4) SIGNS SHALL BE MOUNTED ABOVE THE TOP OF THE BARRICADE. ALL TYPE III BARRICADES SHALL HAVE TWO (2) AMBER TYPE A-LOW INTENSITY FLASHING LIGHTS SPACED NEAR THE CENTERLINE OF THE SUPPORTS.
19. THE ROAD NAME SIGN SHALL HAVE A BLACK LEGEND ON FLUORESCENT ORANGE REFLECTIVE SHEETING. THE SIGN BLANK SHALL BE A 9" BY VARIABLE OR A 12" BY VARIABLE WITH DESIGN SERIES C LETTERS. THE CAPITAL LETTERS SHALL BE 6" WITH 5" LOWER CASE.
20. DURING NON-WORKING HOURS AT THE POINT OF ROAD CLOSURE TO ALL TRAFFIC THE CONTRACTOR SHALL PROVIDE A MEANS TO RESTRAIN THE BARRICADES FROM EASY MOVEMENT BY VANDALS. THE CHOSEN METHOD SHALL BE APPROVED BY THE ENGINEER.
21. CONSTRUCTION EQUIPMENT SHALL NOT BE PARKED IMMEDIATELY BEHIND THE TYPE III BARRICADES DURING NON-WORKING HOURS. IN ANY EVENT ARTICLE 701.04 OF THE STANDARD SPECIFICATIONS SHALL APPLY.
22. THE CONTRACTOR SHALL BE RESPONSIBLE FOR MAINTAINING THE VISIBILITY OF ALL DETOUR AND CONSTRUCTION SIGNING, INCLUDING BRUSHING BACK VEGETATION IF DEEMED NECESSARY BY THE ENGINEER.
23. THE FOLLOWING ILLINOIS DEPARTMENT OF TRANSPORTATION STANDARD IS APPLICABLE FOR THIS WORK: STANDARD 701901, BLR 21
24. THE ENGINEER SHALL BE NOTIFIED AT LEAST TWO (2) HOURS BEFORE THE ROAD IS TO BE OPENED TO TRAFFIC. THE ENGINEER WILL CONTACT THE APPROPRIATE LOCAL AGENCIES AND INTERESTED PARTIES.
25. THE PENALTY FOR EXCEEDING THE TIME LIMIT, AS STATED IN DETOUR GENERAL NOTE TWO OF THESE PLANS, SHALL EQUAL THE CHARGE OF TRAFFIC CONTROL DEFICIENCY OF \$1000 PER DAY, FOR EVERY CALENDAR DAY THE DETOUR AND ROAD CLOSURE EXCEEDS THE TIME LIMIT SET IN DETOUR GENERAL NOTE TWO. THIS PENALTY CAN BE ASSESSED IN ADDITION TO THE PENALTY SPECIFIED IN THE SPECIAL PROVISIONS FOR TRAFFIC CONTROL AND PROTECTION AND BOTH PENALTIES CAN BE CHARGED CONCURRENTLY.

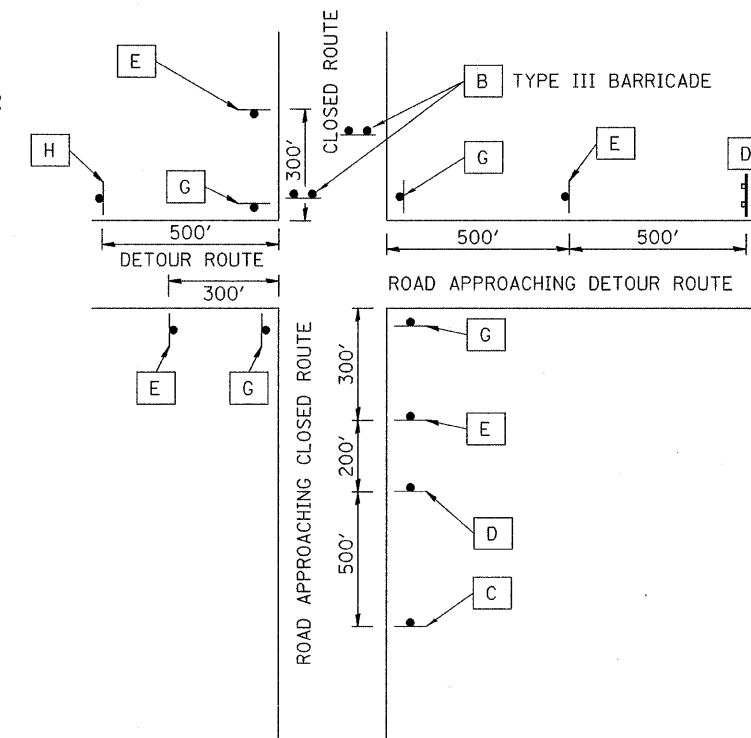


PRE-DETOUR INFORMATION

NOTE: THIS SIGN SHALL BE INSTALLED 7-10 CALENDAR DAYS PRIOR TO THE DETOUR AND ROAD CLOSURE. THE SIGNS SHALL BE REMOVED THE DAY THE DETOUR BEGINS.

LOCATIONS OF PRE-DETOUR INFORMATION BOARDS

DAMISCH ROAD @ BIG TIMBER
DAMISCH ROAD @ U.S. 20



TYPICAL INTERSECTION AT POINT OF DETOUR

FILE NAME = 080043-shr-detour.dgn	USER NAME =	DESIGNED - L.F.S. DRAWN - T.W.K.	REVISED - REVISED - REVISED - REVISED -	STATE OF ILLINOIS KANE COUNTY DIVISION OF TRANSPORTATION	HLR	DETOUR PLAN DAMISCH ROAD /C.H. 7	F.A.S.	SECTION	COUNTY	TOTAL SHEETS	SHEET NO.
	PLOT SCALE =	CHECKED - DATE - 01/07/10					132	07-00358-00-BR	KANE	33	14
	PLOT DATE = 1/28/2010				SCALE:	SHEET NO. OF SHEETS	STA. TO STA.	FED. ROAD DIST. NO. [ILLINOIS] FED. AID PROJECT			