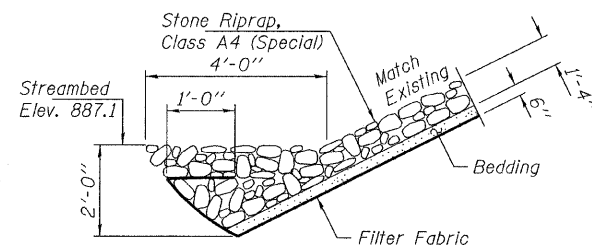


SECTION A-A
(Horiz. dim. @ Rt. L's)

Note: See Special Provisions for Stone Riprap, Class A4.

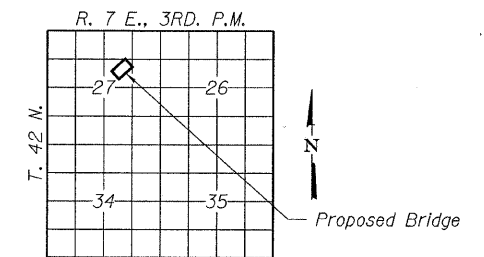
* Included in the cost of Pipe Underdrains For Structures 4"



SECTION B-B

TYLER CREEK
BUILT 20__ BY
KANE COUNTY
SEC. 07-00358-00-BR
DAMISCH ROAD / C.H. 7
STR. NO. 045-6302
LOADING HL-93


NAME PLATE
See Std. 515001



LOCATION SKETCH

DESIGNED - S.W.M.
CHECKED - A.S.L.
DRAWN - D.A.B.
CHECKED - S.W.M.

GENERAL DETAILS
STRUCTURE NO. 045-6302

HAMPTON, LENZINI & RENWICK, INC. CIVIL & STRUCTURAL ENGINEERS LAND SURVEYORS  3085 STEVENSON DRIVE, SUITE 201 SPRINGFIELD, ILLINOIS 62703 (217) 546-3400	FAS	SECTION	COUNTY	TOTAL SHEETS	SHEET NO.
	132	07-00358-00-BR	KANE	33	21
PROJECT NUMBER: 08.0043.100	DATE: 01/07/10	DAMISCH ROAD OVER TYLER CREEK		CONTRACT NO. 63444	
		FED. ROAD DIST. NO.	ILLINOIS FED. AID PROJECT		