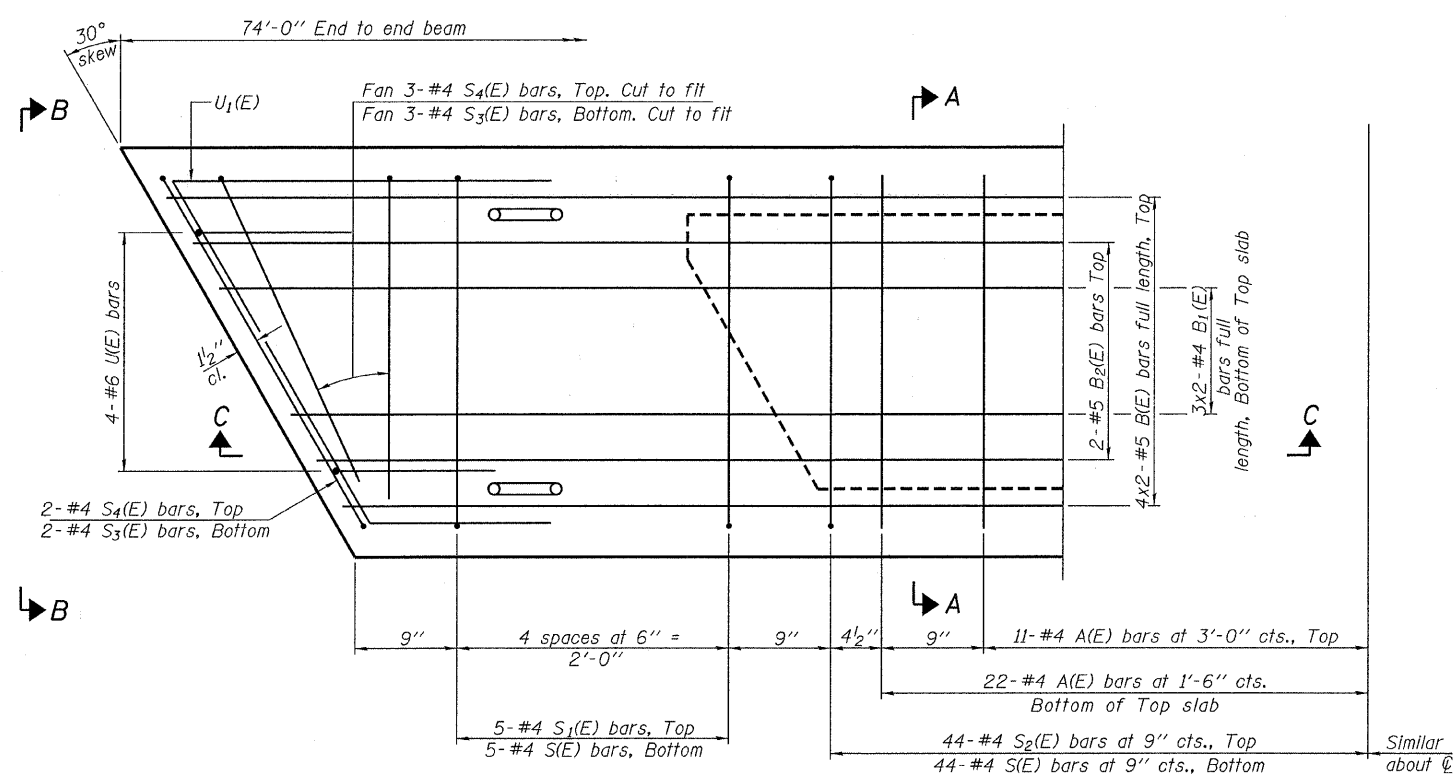


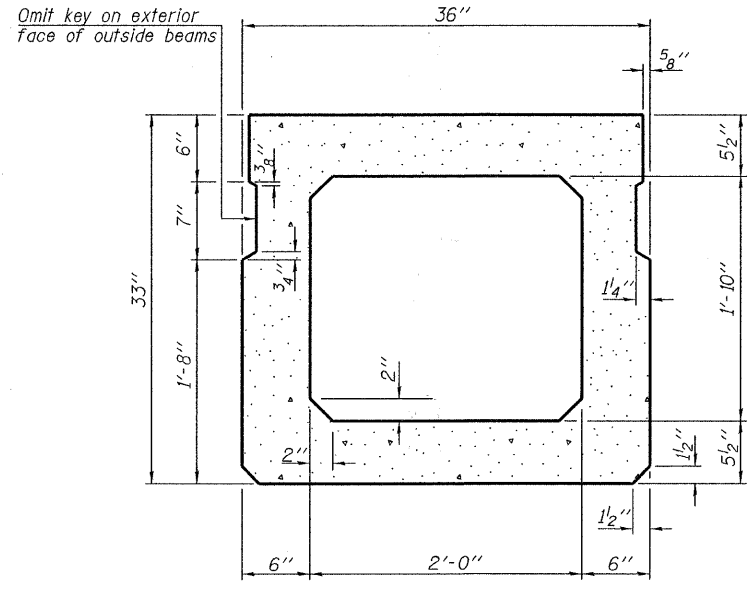
SECTION C-C



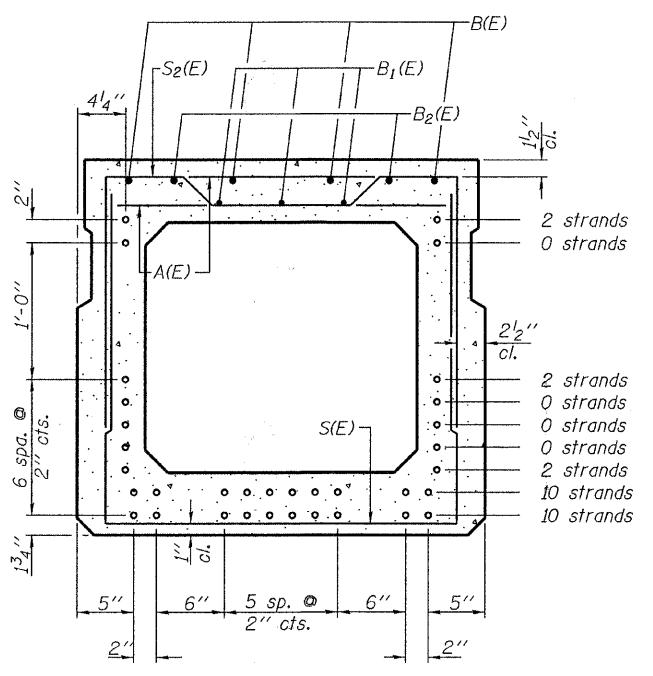
PLAN VIEW

Note: Spacing of S(E) and S2(E) bars may be adjusted up to 4" in the immediate area of the transverse tie diaphragms to miss the block outs for the transverse ties.

MINIMUM BAR LAP
 #4 bar = 2'-0"
 #5 bar = 2'-6"

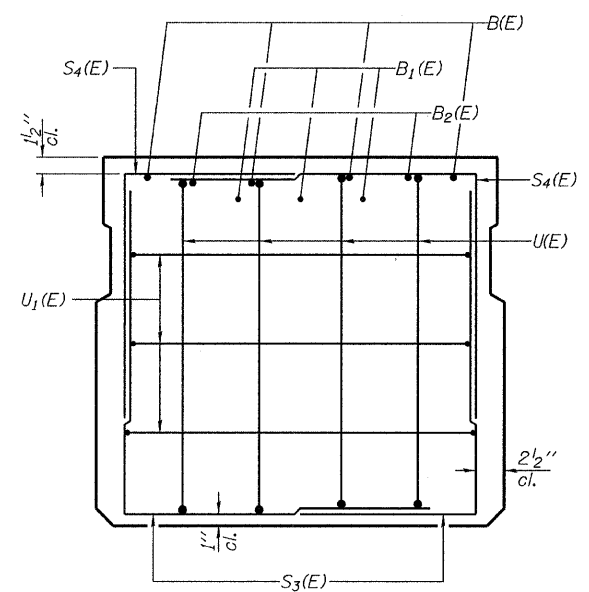


SECTION A-A
(Showing dimensions)



SECTION A-A
(Showing reinforcement and permissible strand locations)

Note: Place the number of strands specified in each row symmetrically about the centerline of beam in the permissible strand locations shown.



VIEW B-B

BAR LIST
ONE BEAM ONLY
 (For information only)

Bar	No.	Size	Length	Shape
A(E)	66	#4	2'-7"	—
B(E)	8	#5	38'-2"	—
B1(E)	6	#4	37'-11"	—
B2(E)	4	#5	10'-0"	—
D(E)	48	#4	2'-9"	L ⊏
S(E)	98	#4	7'-5"	—
S1(E)	10	#4	6'-3"	⌋
S2(E)	88	#4	6'-6"	⌋
S3(E)	10	#4	4'-10"	⌋
S4(E)	10	#4	4'-3"	⌋
U(E)	8	#6	5'-0"	⌋
U1(E)	6	#4	6'-10"	⌋

Note: See sheets 22 thru 24 for additional details and Bill of Material.

SUPERSTRUCTURE
33" x 36" PPC DECK BEAM
STRUCTURE NO. 045-6302

DESIGNED - S.W.M.
CHECKED - A.S.L.
DRAWN - D.A.B.
CHECKED - S.W.M.

PD-3336-R 11-1-09

HAMPTON, LENZINI & RENWICK, INC.
 CIVIL & STRUCTURAL ENGINEERS
 LAND SURVEYORS
HLR 3085 STEVENSON DRIVE, SUITE 201
 SPRINGFIELD, ILLINOIS 62703
 (217) 546-3400
 PROJECT NUMBER: 08.0043.130 DATE: 01/07/10

FAS	SECTION	COUNTY	TOTAL SHEETS	SHEET NO.
132	07-00358-00-BR	KANE	33	22
DAMISCH ROAD OVER TYLER CREEK		CONTRACT NO. 63444		
FED. ROAD DIST. NO.		ILLINOIS FED. AID PROJECT		