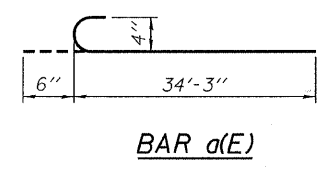
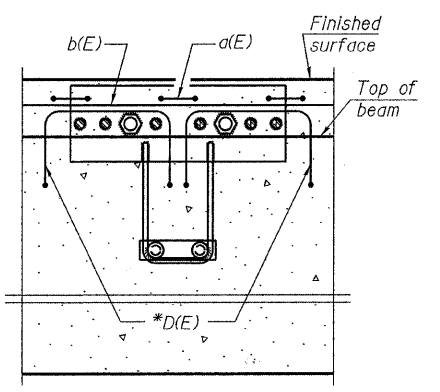
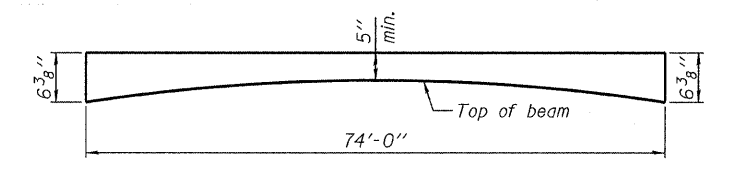


\* Place 2-#4 D(E) bars in beam at each post location as shown. D(E) bar included in cost of beam.



Notes:  
Formwork necessary for the wearing surface may be secured utilizing the bottom rail anchorage inserts and/or additional inserts cast into the beam.

DESIGNED - S.W.M.
CHECKED - A.S.L.
DRAWN - D.A.B.
CHECKED - S.W.M.

PDS-S-R34-D 11-1-09

**MINIMUM BAR LAP**  
#4 bar = 2'-0"

**HAMPTON, LENZINI & RENWICK, INC.**  
CIVIL & STRUCTURAL ENGINEERS  
LAND SURVEYORS

**HLR** 3085 STEVENSON DRIVE, SUITE 201  
SPRINGFIELD, ILLINOIS 62703  
(217) 546-3400

PROJECT NUMBER: 08.0043.130 DATE: 01/07/10

**SUPERSTRUCTURE DETAILS**  
**STRUCTURE NO. 045-6302**

FAS	SECTION	COUNTY	TOTAL SHEETS	SHEET NO.
132	07-00358-00-BR	KANE	33	25
DAMISCH ROAD OVER TYLER CREEK		CONTRACT NO. 63444		
FED. ROAD DIST. NO.		ILLINOIS FED. AID PROJECT		