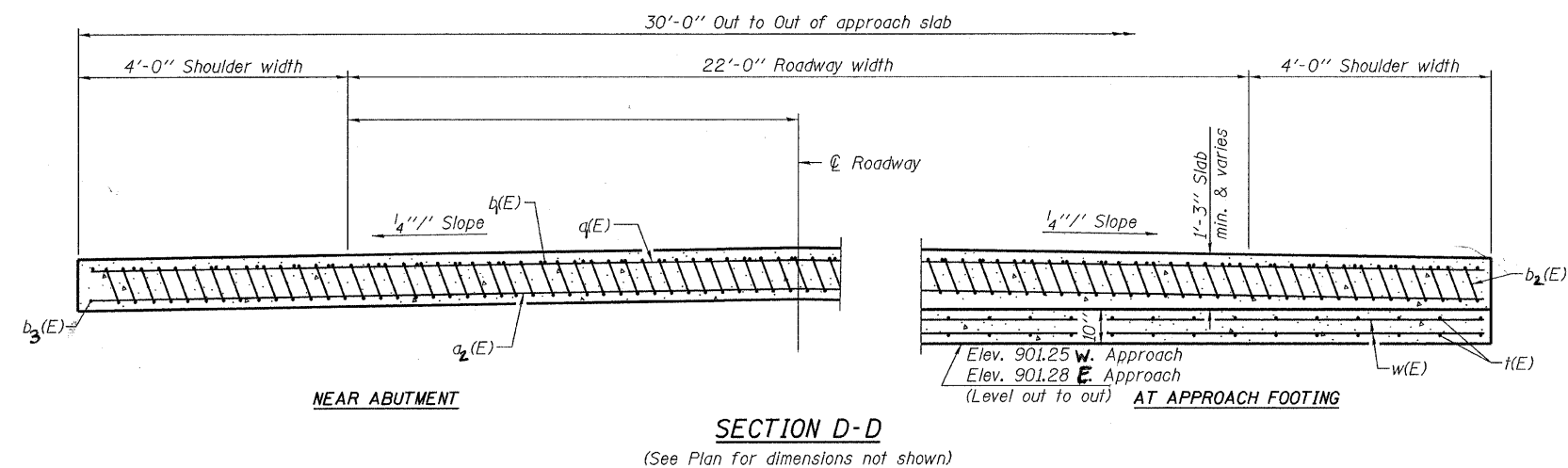
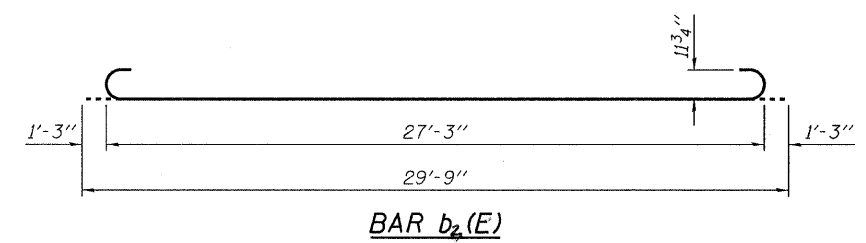
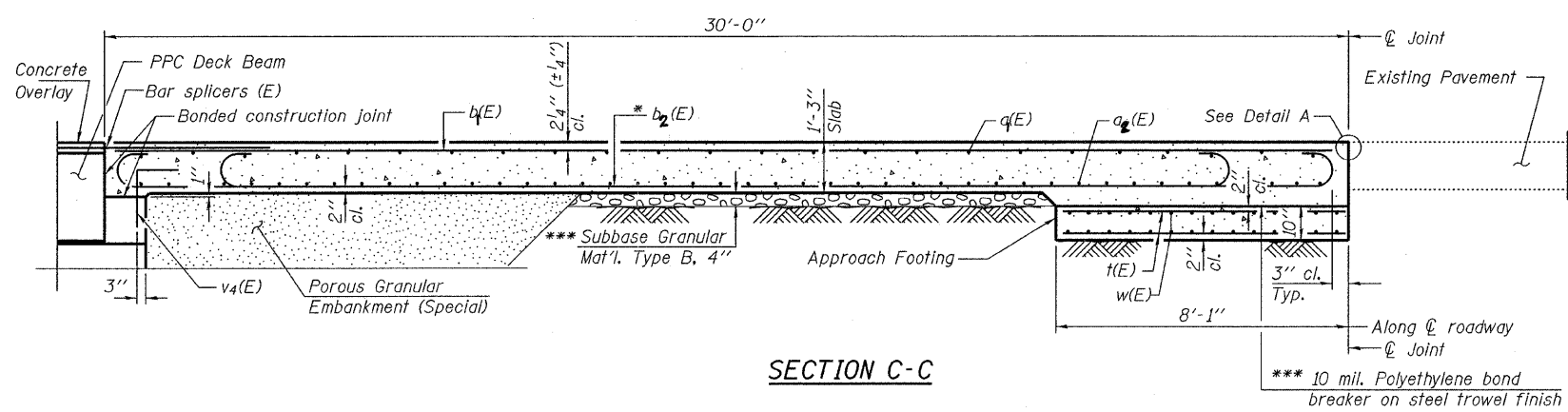


Notes:
 See sheet 25 for Detail A.
 Approach slab concrete shall be paid for as Concrete Superstructure.
 Approach footing concrete shall be paid for as Concrete Structures.
 Reinforcement shall be paid for as Reinforcement Bars, Epoxy Coated.
 For $v_4(E)$ bar details, see sheet 28.
 The approach footing maximum applied service bearing pressure (Q_{max}) = 2.0 ksf.
 For bar splicer details, see sheet 29.
 Cost of excavation for approach footing included with Concrete Structures.
 For Porous Granular Embankment (Special) and drainage treatment details, see sheet 20.



* Tilt #9 $b_2(E)$ bars as required to maintain clearance.
 *** Cost included with Concrete Superstructure.

**TWO APPROACHES
 BILL OF MATERIAL**

Bar	No.	Size	Length	Shape
$a_1(E)$	50	#4	34'-3"	—
$a_2(E)$	92	#5	34'-3"	—
$b_1(E)$	62	#4	29'-8"	—
$b_2(E)$	146	#9	29'-9"	—
$b_3(E)$	4	#4	14'-8"	—
$f(E)$	124	#4	7'-9"	—
$w(E)$	60	#5	34'-3"	—
Concrete Superstructure			Cu. Yd.	86.1
Concrete Structures			Cu. Yd.	15.0
Reinforcement Bars, Epoxy Coated			Pound	23,250
Bridge Deck Grooving			Sq. Yd.	187
Protective Coat			Sq. Yd.	200

DESIGNED - S.W.M.
CHECKED - A.S.L.
DRAWN - D.A.B.
CHECKED - S.W.M.

HAMPTON, LENZINI & RENWICK, INC.
 CIVIL & STRUCTURAL ENGINEERS
 LAND SURVEYORS

HLR 3085 STEVENSON DRIVE, SUITE 201
 SPRINGFIELD, ILLINOIS 62703
 (217) 546-3400

PROJECT NUMBER: 08.0043.130 DATE: 01/07/10

FAS	SECTION	COUNTY	TOTAL SHEETS	SHEET NO.
132	07-00358-00-BR	KANE	33	27
DAMISCH ROAD OVER TYLER CREEK		CONTRACT NO. 63444		
FED. ROAD DIST. NO.	ILLINOIS	FED. AID PROJECT		

(Sheet 2 of 2)
**BRIDGE APPROACH SLAB DETAILS
 STRUCTURE NO. 045-6302**