

FAU RTE	SECTION	COUNTY	TOTAL SHEETS	SHEET NO.
2798	03-00193-00-FP	COOK	51	1
F.H.W.A. REG.		ILLINOIS	PROJECT M-9003(488)	

CONTRACT NO. 63445

STATE OF ILLINOIS  
DEPARTMENT OF TRANSPORTATION  
DIVISION OF HIGHWAYS

**PLANS FOR PROPOSED  
FEDERAL AID HIGHWAY**

CENTRAL AVE. (FAU 2798)  
26TH ST. (FAU 1459) TO ROOSEVELT RD. (FAP 347)  
RESURFACING  
PROJECT M-9003(488)  
SECTION 03-00193-00-FP  
TOWN OF CICERO  
COOK COUNTY  
C-91-076-10  
PROJECT LOCATION MAP



LOCATION OF SECTION INDICATED THUS: [Symbol]

- INDEX OF SHEETS**
- COVER SHEET, INDEX OF SHEETS, LOCATION MAP
  - STATE STANDARDS, GENERAL NOTES, MWRDGC NOTES, SPECIAL PROJECT NOTES, BENCHMARKS
  - SUMMARY OF QUANTITIES
  - TYPICAL CROSS SECTIONS, HOT-MIX ASPHALT MIXTURE REQUIREMENTS, PAVEMENT CORES
  - SPECIAL PROJECT DETAILS
  - SPECIAL PROJECT DETAILS
  - 7-15.) PLAN: CENTRAL AVENUE (RESURFACING) - 26TH STREET TO ROOSEVELT ROAD
  - 16-18.) PLAN: CENTRAL AVENUE (PAVEMENT MARKING) - 26TH STREET TO ROOSEVELT ROAD
  - 19.) STORM WATER POLLUTION PREVENTION PLAN
  - 20-25.) DISTRICT ONE STANDARD TRAFFIC SIGNAL DESIGN DETAILS
  - 26.) TRAFFIC SIGNAL REMOVAL PLAN CENTRAL AVE AT 26TH ST
  - 27.) TRAFFIC SIGNAL MODIFICATION PLAN CENTRAL AVE AT 26TH ST
  - 28.) CABLE PLAN, PHASE DESIGNATION DIAGRAM, EVP SEQUENCE AND SCHEDULE OF QUANTITIES CENTRAL AVE AT 26TH ST
  - 29.) TEMPORARY TRAFFIC SIGNAL AND REMOVAL PLAN CENTRAL AVE AT 25TH ST
  - 30.) TEMPORARY CABLE PLAN AND PHASE DESIGNATION DIAGRAM CENTRAL AVE AT 25TH ST
  - 31.) TRAFFIC SIGNAL INSTALLATION PLAN CENTRAL AVE AT 25TH ST
  - 32.) CABLE PLAN, PHASE DESIGNATION DIAGRAM, EVP SEQUENCE AND SCHEDULE OF QUANTITIES CENTRAL AVE AT 25TH ST
  - 33.) TEMPORARY TRAFFIC SIGNAL AND REMOVAL PLAN CENTRAL AVE AT 24TH ST
  - 34.) TEMPORARY CABLE PLAN AND PHASE DESIGNATION DIAGRAM CENTRAL AVE AT 24TH ST
  - 35.) TRAFFIC SIGNAL INSTALLATION PLAN CENTRAL AVE AT 24TH ST
  - 36.) CABLE PLAN, PHASE DESIGNATION DIAGRAM, EVP SEQUENCE AND SCHEDULE OF QUANTITIES CENTRAL AVE AT 24TH ST
  - 37.) TRAFFIC SIGNAL REMOVAL PLAN CENTRAL AVE AT 16TH ST
  - 38.) TRAFFIC SIGNAL MODIFICATION PLAN CENTRAL AVE AT 16TH ST
  - 39.) CABLE PLAN, PHASE DESIGNATION DIAGRAM, EVP SEQUENCE AND SCHEDULE OF QUANTITIES CENTRAL AVE AT 16TH ST
  - 40.) INTERCONNECT PLANS CENTRAL AVE (26TH ST TO 24TH ST)
  - 41.) INTERCONNECT SCHEMATIC CENTRAL AVE (26TH ST TO 24TH ST)
  - 42.) MAST ARM MOUNTED STREET NAME SIGNS
  - 43.) BD-08 DETAILS FOR FRAMES AND LIDS ADJUSTMENTS WITH MILLING
  - 44.) BD-32 BUTT JOINT AND HMA TAPER DETAILS
  - 45.) TC-10 TRAFFIC CONTROL & PROTECTION FOR SIDE ROADS, INTERSECTIONS, & DRIVEWAYS
  - 46.) TC-11 TYPICAL APPLICATIONS RAISED REFLECTIVE PAVEMENT MARKINGS (SNOW PLOW RESISTANT)
  - 47.) TC-13 DISTRICT ONE TYPICAL PAVEMENT MARKINGS
  - 48.) TC-14 TRAFFIC CONTROL AND PROTECTION AT TURN BAYS
  - 49.) TC-16 PAVEMENT MARKING LETTERS AND SYMBOLS FOR TRAFFIC STAGING
  - 50.) TC-18 SIGNING FOR FLAGGING OPERATIONS AT WORK ZONE OPENINGS
  - 51.) TC-22 ARTERIAL ROAD INFORMATION SIGN

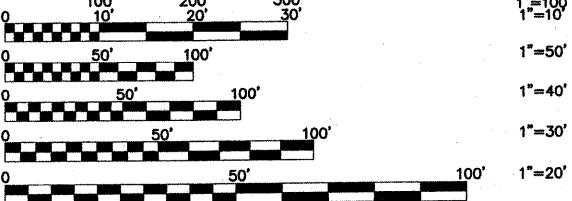
**STATE STANDARDS**  
SEE SHEET 2

DESIGN DESIGNATION: 11,300(2009) MINOR ARTERIAL 0.88(COMP-20)

**TRAFFIC DATA**

ADT: CENTRAL AVENUE 11,300 (2009)

**POSTED SPEED**      **DESIGN SPEED**  
25 MPH (EXISTING)      25 MPH (EXISTING)  
25 MPH (PROPOSED)      25 MPH (PROPOSED)



FULL SIZE PLANS HAVE BEEN PREPARED USING STANDARD ENGINEERING SCALES. REDUCED SIZED PLANS WILL NOT CONFORM TO STANDARD SCALES. IN MAKING MEASUREMENTS ON REDUCED PLANS, THE ABOVE SCALES MAY BE USED.

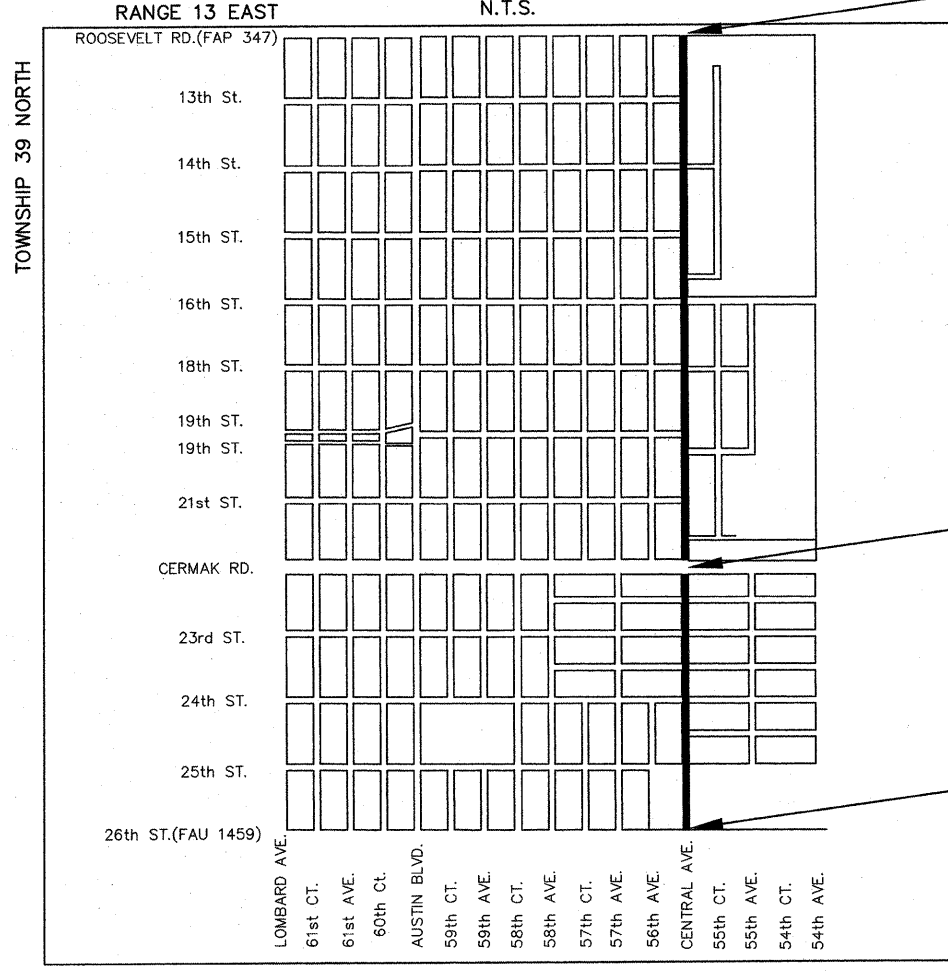
**J.U.L.I.E.**  
JOINT  
UTILITY  
LOCATION  
INFORMATION FOR  
EXCAVATION  
CALL 811

Know what's below.  
Call before you dig.

**Frank Novotny & Associates, Inc.**  
825 Midway Drive • Willowbrook, IL • 60527 • Telephone: (630) 887-8640 • Fax: (630) 887-0132  
Civil Engineers Municipal Consultants ILLINOIS PROFESSIONAL DESIGN FIRM NO. 184-000928

R E V I S I O N S			
NO.	BY	DATE	DESCRIPTION
1	AM	1/22/10	PER IDOT REVIEW

CONTRACT NO. 63445



CENTRAL AVENUE  
PROJECT ENDS  
AT STA. 79+63  
(ROOSEVELT ROAD)

CENTRAL AVENUE  
CONTRACT OMISSION  
FROM STA. 25+84  
TO STA. 27+32  
(CERMAK ROAD)

CENTRAL AVENUE  
PROJECT BEGINS  
AT STA. 0+68  
(26th STREET)

— DENOTES LOCATION OF IMPROVEMENT  
IN CICERO TOWNSHIP

LENGTH OF PROJECT

GROSS LENGTH OF PROJECT      7,895 FEET (1.4953 MILES)  
NET LENGTH OF PROJECT      7,747 FEET (1.4670 MILES)

STATE OF ILLINOIS  
DEPARTMENT OF TRANSPORTATION  
DIVISION OF HIGHWAYS

APPROVED \_\_\_\_\_ 2010

TOWN PRESIDENT *Larry Dominick*  
LARRY DOMINICK, PRESIDENT, CICERO

PASSED *January 29, 2010*  
*Cheryl Christobal*  
DISTRICT #1 ENGINEER OF LOCAL ROADS & STREETS

RELEASING FOR BID  
BASED ON LIMITED  
REVIEW *February 2, 2010*  
*Dana M. Schinabel*  
DEPUTY DIRECTOR OF HIGHWAYS, REGION #1 ENGINEER

*Dana M. Schinabel*  
DANA M. SCHINABEL, P.E.  
IL. P.E. NO. 062-054043  
EXPIRES 11-30-2011  
1-22-10  
DATE

*Timothy H. Klass*  
TIMOTHY H. KLASS, P.E.  
IL. P.E. NO. 062-046111  
EXPIRES 11-30-2011  
1-22-10  
DATE

**PRINTED BY THE AUTHORITY  
OF THE STATE OF ILLINOIS**

FIELD ENGINEER: MARILIN SOLOMON (847)705-4407