

- DENOTES HOT-MIX ASPHALT SURFACE REMOVAL. (SEE TYPICAL CROSS SECTIONS), TO BE REPLACED WITH "LEVELING BINDER (MACHINE METHOD), N70," 1 INCH AVG., "AREA REFLECTIVE CRACK CONTROL TREATMENT, SYSTEM A" AND "HOT-MIX ASPHALT SURFACE COURSE, MIX "D", N70", 2 INCH"
- DENOTES "DRIVEWAY REMOVAL" AND "SIDEWALK REMOVAL" (AS DIRECTED BY THE ENGINEER)
- DENOTES P.C. CONCRETE SIDEWALK, 5 INCH, WITH DETECTABLE WARNING
- DENOTES "P.C. CONCRETE DRIVEWAY PAVEMENT, 7 INCH" AND "P.C. CONCRETE SIDEWALK, 5 INCH" ON SUBBASE GRANULAR MATERIAL, TYPE B, 2 INCH"
- DENOTES HOT-MIX DRIVEWAY REMOVAL AND REPLACEMENT
- DENOTES CLASS D PATCHES, TYPE II - IV, 12", - AS DIRECTED

LEGEND

- "A" DENOTES EXISTING VALVE VAULTS, VALVE BOXES, INLETS, CATCH BASINS AND MANHOLES TO BE CLEANED, GROUTED, AND ADJUSTED TO GRADE WITH NEW ADJUSTING RINGS. (ALL TOP BANDS OF FALLEN, COMMON OR CONCRETE BRICK TO BE REPLACED WITH PRECAST CONCRETE ADJUSTING RINGS)
- "S" DENOTES EXISTING FRAMES AND LIDS TO BE ADJUSTED (SPECIAL) (SEE SHEET 41 FOR DETAIL)
- "R" DENOTES EXISTING STRUCTURES TO BE RECONSTRUCTED
- "F" DENOTES EXISTING STRUCTURES TO BE FILLED
- * DENOTES ALLEY RETURN TO BE REMOVED WITH "PAVEMENT REMOVAL" AND REPLACED WITH "PORTLAND CEMENT CONCRETE PAVEMENT, 8 INCH"
- == DENOTES "COMBINATION CURB AND GUTTER REMOVAL"
- == DENOTES "COMBINATION CURB AND GUTTER, TYPE B-V.12"
- 20" DENOTES STORM SEWER (WATER MAIN QUALITY) 8 INCH (LENGTH AS NOTED)

BENCHMARK

NE BOLT ON HYDRANT AT NORTHEAST CORNER OF 24TH PLACE AND CENTRAL AVENUE ELEV. 605.98
 ARROW BOLT ON HYDRANT AT NORTHEAST CORNER OF 24TH STREET AND CENTRAL AVENUE ELEV. 606.99
 S BOLT ON HYDRANT AT NORTHEAST CORNER OF 23RD PLACE AND CENTRAL AVENUE ELEV. 606.49



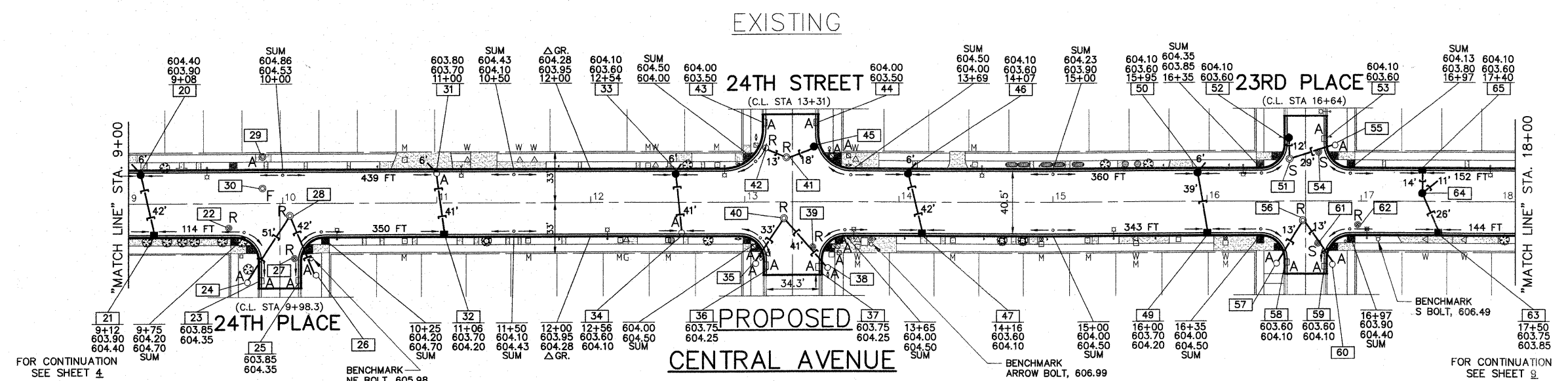
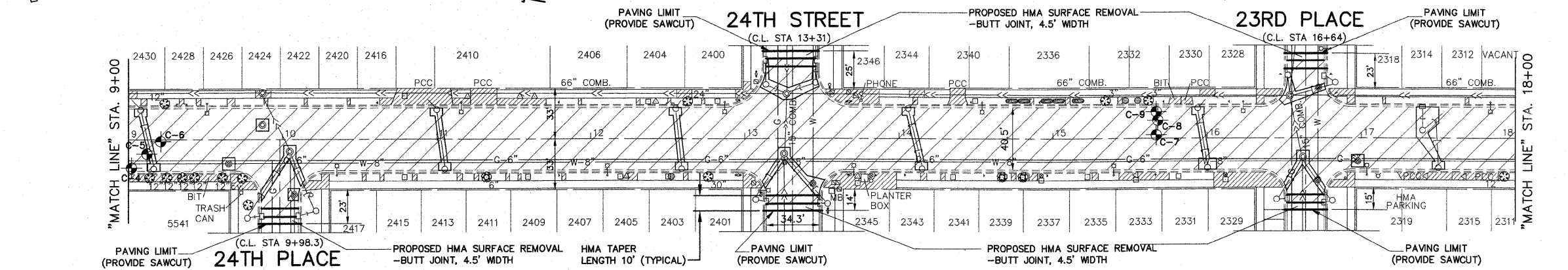
FAU RTE	SECTION	COUNTY	TOTAL SHEETS	SHEET NO.
2798	03-00193-00-FP	COOK	51	8
F.H.W.A. REG.		ILLINOIS	PROJECT M-9003(488)	

STRUCTURE SCHEDULE

- 20 PROPOSED CATCH BASIN TYPE A, 4' DIA., TYPE 1 FR. & O.L. RIM=603.90 INV(E)=600.50
- 21 PROPOSED INLET TYPE A, 2' DIA., TYPE 1 FR. & O.L. RIM=603.90 INV(SW)=598.99
- 22 VALVE VAULT RECONSTRUCTION RIM=604.30
- 23 INLET ADJUSTMENT NEW TYPE 1 FR. & O.L. RIM=603.85
- 24 CATCH BASIN ADJUSTMENT RIM=604.40, INV(NW)=598.84
- 25 INLET ADJUSTMENT NEW TYPE 1 FR. & O.L. RIM=603.85
- 26 CATCH BASIN ADJUSTMENT NEW TYPE 1 FR. & O.L. RIM=604.55, INV(SW)=599.11
- 27 VALVE VAULT RECONSTRUCTION NEW TYPE 1 FR. & C.L. RIM=604.05
- 28 MANHOLE RECONSTRUCTION RIM=604.85 INV(SE)=597.93 INV(NE)=599.31
- 29 MANHOLE ADJUSTMENT NEW TYPE 1 FR. & C.L. RIM=604.42
- 30 ABANDONED MANHOLE FIELD VERIFY AND FILL
- 31 CATCH BASIN ADJUSTMENT RIM=603.70, INV(E)=595.86
- 32 PROPOSED INLET TYPE A, 2' DIA., TYPE 1 FR. & O.L. RIM=603.70 INV(W)=596.27
- 33 PROPOSED CATCH BASIN TYPE A, 4' DIA., TYPE 1 FR. & O.L. RIM=603.60 INV(E)=598.81
- 34 CATCH BASIN ADJUSTMENT RIM=603.60, INV(W)=599.07
- 35 CATCH BASIN ADJUSTMENT RIM=604.40, INV(NW)=599.92
- 36 INLET ADJUSTMENT NET TYPE 1 FR. & O.L. RIM=603.75
- 37 INLET ADJUSTMENT RIM=603.75
- 38 CATCH BASIN ADJUSTMENT RIM=604.40, INV(SW)=599.95
- 39 VALVE VAULT RECONSTRUCTION NEW TYPE 1 FR. & C.L. RIM=604.30
- 40 MANHOLE RECONSTRUCTION NEW TYPE 1 FR. & C.L. RIM=604.70 INV(W)=592.55 INV(SE)=599.66 INV(NE)=598.16 INV(E)=595.11
- 41 MANHOLE RECONSTRUCTION NEW TYPE 1 FR. & C.L. RIM=604.20 INV(NW)=599.82 INV(SW)=600.22
- 42 CATCH BASIN RECONSTRUCTION NEW TYPE 1 FR. & C.L. RIM=604.00 INV(NE)=598.01
- 43 INLET ADJUSTMENT RIM=603.50
- 44 INLET ADJUSTMENT RIM=603.50
- 45 PROPOSED CATCH BASIN TYPE A, 4' DIA., TYPE 1 FR. & C.L. RIM=603.70 INV(W)=600.94 INV(SE)=599.26
- 46 PROPOSED CATCH BASIN TYPE A, 4' DIA., TYPE 1 FR. & O.L. RIM=603.60 INV(E)=597.97
- 47 PROPOSED INLET TYPE A, 2' DIA., TYPE 1 FR. & O.L. RIM=603.60 INV(W)=598.55
- 48 PROPOSED INLET TYPE A, 2' DIA., TYPE 1 FR. & O.L. RIM=603.70 INV(SW)=599.10
- 49 PROPOSED INLET TYPE A, 2' DIA., TYPE 1 FR. & O.L. RIM=603.70 INV(SW)=599.10
- 50 PROPOSED CATCH BASIN TYPE A, 4' DIA., TYPE 1 FR. & O.L. RIM=603.60 INV(NE)=598.66
- 51 MANHOLE ADJUSTMENT (SPECIAL) NEW TYPE 1 FR. & C.L. RIM=603.75 INV(W)=598.36 INV(NW)=598.56
- 52 PROPOSED CATCH BASIN TYPE C, 2' DIA., TYPE 1 FR. & O.L. RIM=603.60 INV(E)=597.90
- 53 INLET ADJUSTMENT RIM=603.60
- 54 VALVE VAULT ADJUSTMENT (SPECIAL) RIM=603.75
- 55 CATCH BASIN ADJUSTMENT RIM=604.30 INV(SE)=600.72
- 56 MANHOLE RECONSTRUCTION RIM=604.60 INV(SE)=597.64 INV(NE)=599.84
- 57 CATCH BASIN ADJUSTMENT NEW TYPE 1 FR. & C.L. RIM=604.20 INV(NE)=600.05
- 58 INLET ADJUSTMENT NEW TYPE 1 FR. & O.L. RIM=603.60
- 59 INLET ADJUSTMENT NEW TYPE 1 FR. & O.L. RIM=603.60
- 60 CATCH BASIN ADJUSTMENT RIM=604.30, INV(SW)=600.66
- 61 VALVE VAULT ADJUSTMENT (SPECIAL) NEW TYPE 1 FR. & C.L. RIM=603.90
- 62 VALVE VAULT RECONSTRUCTION RIM=604.05
- 63 PROPOSED INLET TYPE C, 2' DIA., TYPE 1 FR. & O.L. RIM=603.75 INV(W)=599.00
- 64 PROPOSED CATCH BASIN TYPE A, 4' DIA., TYPE 1 FR. & C.L. RIM=604.50 INV(E)=598.45 INV(W)=599.45
- 65 PROPOSED INLET TYPE A, 2' DIA., TYPE 1 FR. & O.L. RIM=603.60 INV(E)=600.25

NOTE: ALL SCHEDULED RIM ELEVATIONS ARE PROPOSED.

IMPORTANT!
 FULL SIZE PLANS HAVE BEEN PREPARED USING STANDARD ENGINEERING SCALES. REDUCED SIZED PLANS WILL NOT CONFORM TO STANDARD SCALES INDICATED IN TITLE BLOCK.



606	EXISTING Q PROFILE																		606																			
604	PROPOSED Q PROFILE																		604																			
602																			602																			
600	9	10	11	12	13	30.68	14	14+50	15	16	17	18							600																			
	EXISTING Q ELEVATION	PROPOSED Q ELEVATION	605.02	604.85	605.08	604.91	605.05	604.88	605.01	604.84	604.49	604.32	605.01	604.84	604.46	604.29	604.84	604.67	604.94	604.77	604.76	604.59	604.78	604.61	604.78	604.61	604.73	604.56	604.70	604.53	604.89	604.72	604.82	604.65	604.73	604.56	604.89	604.72

Frank Novotny & Associates, Inc.
 Civil Engineers 825 Midway Drive • Willowbrook, IL • 60527 • Telephone: (630) 887-8640 • Fax: (630) 887-0132
 Illinois Professional Design Firm No. 184-000928

PROJECT **TOWN OF CICERO, ILLINOIS**
CENTRAL AVENUE RESURFACING
SECTION 03-00193-00-FP

REVISIONS

NO.	BY	DATE	DESCRIPTION
1	AMS	1/22/10	PER IDOT REVIEW

PLAN:
CENTRAL AVENUE-
STA. 9+00 TO STA. 18+00
(RESURFACING)

PROJECT NO. 05043
 SCALE 1"=40'
 DRAWN/DESIGNED JFP-JEP/THK
 DATE DEC., 2009
 CHECKED/APPROVED JLC/THK
 FIELD BOOK NO. FILE

SHEET 8 OF 51 SHEETS