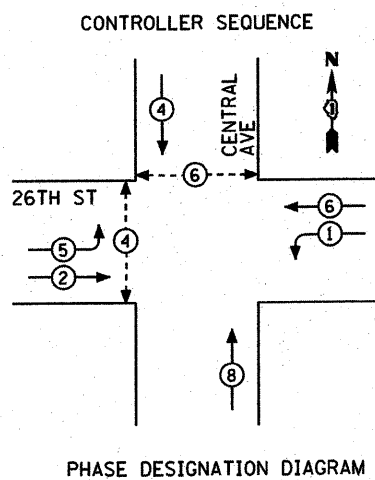
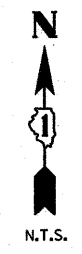


FAU RTE	SECTION	COUNTY	TOTAL SHEETS	SHEET NO.
2798	03-00193-00-FP	COOK	51	28
F.H.W.A. REG.	ILLINOIS	PROJECT	M-9003(488)	

CONTRACT NO. 63455

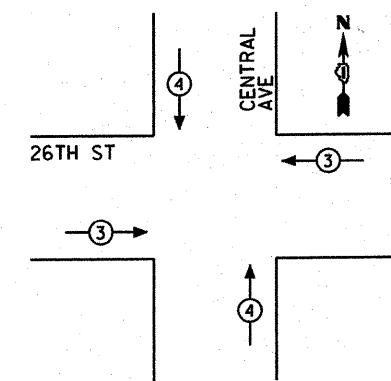
PROPOSED CABLE PLAN



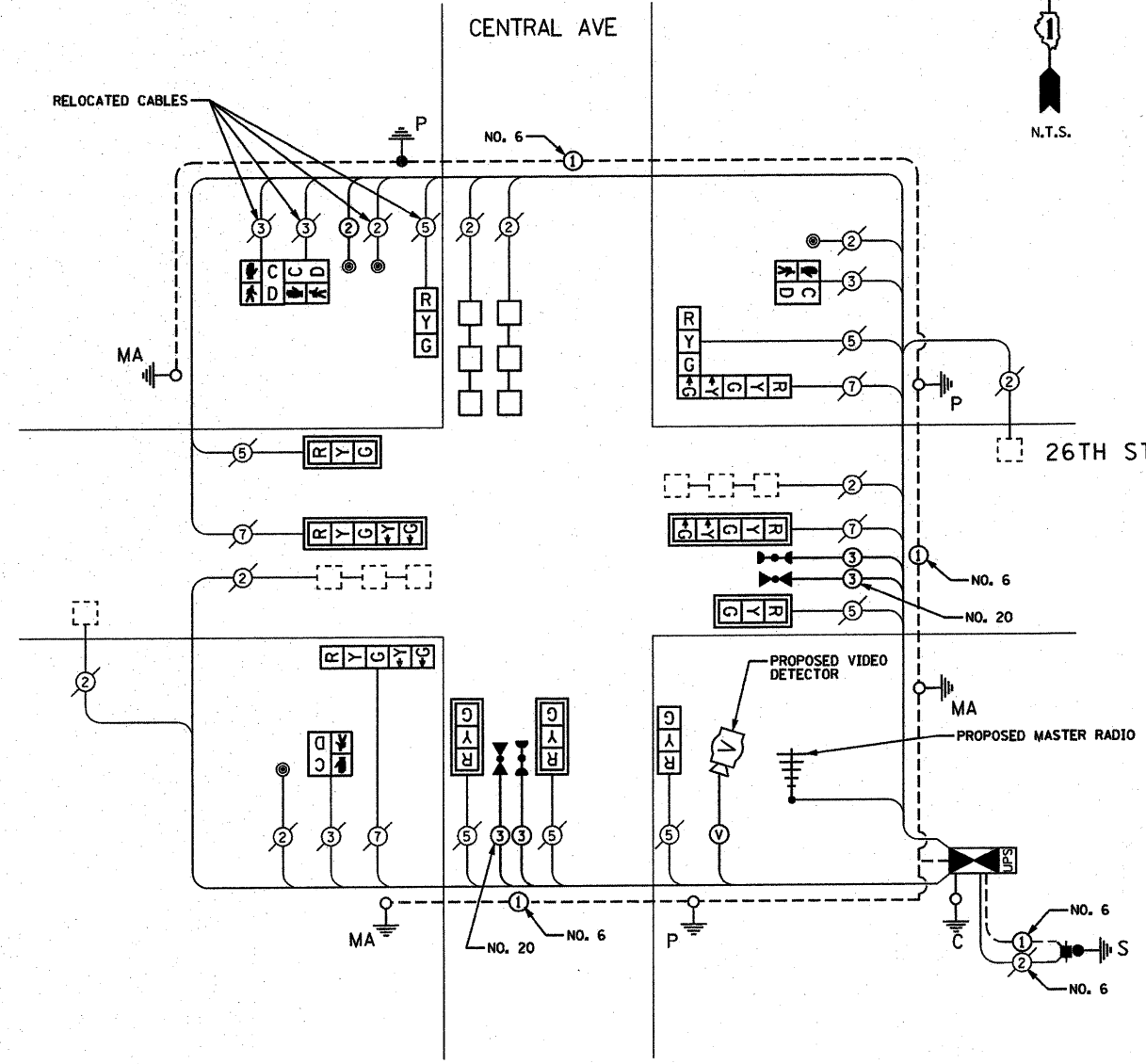
LEGEND

- DUAL ENTRY PHASE
- SINGLE ENTRY PHASE
- OVERLAP
- PEDESTRIAN PHASE
- NUMBER REFERS TO ASSOCIATED PHASE

EMERGENCY VEHICLE PREEMPTION SEQUENCE



PROPOSED EMERGENCY VEHICLE PREEMPTORS		
EMERGENCY VEHICLE PREEMPTOR	3	4
MOVEMENT	← →	↑ ↓



SCHEDULE OF QUANTITIES

QTY	UNIT	ITEM DESCRIPTION
36	SQ FT	PORTLAND CEMENT CONCRETE SIDEWALK 5 INCH
4	FOOT	CONDUIT IN TRENCH, 2 1/2" DIA., GALVANIZED STEEL
4	FOOT	TRENCH AND BACKFILL FOR ELECTRICAL WORK
1	EACH	MAINTENANCE OF EXISTING TRAFFIC SIGNAL INSTALLATION
1	EACH	FULL-ACTUATED CONTROLLER AND TYPE V CABINET, SPECIAL
1	EACH	MASTER CONTROLLER (SPECIAL)
188	FOOT	ELECTRIC CABLE IN CONDUIT, SIGNAL NO. 14 2C
249	FOOT	ELECTRIC CABLE IN CONDUIT, SIGNAL NO. 14 3C
1	EACH	TRAFFIC SIGNAL POST, GALVANIZED STEEL 14 FT.
4	FOOT	CONCRETE FOUNDATION, TYPE A
1	EACH	DRILL EXISTING HANDHOLE
4	EACH	SIGNAL HEAD, LED, 1-FACE, 3-SECTION, MAST ARM MOUNTED
2	EACH	SIGNAL HEAD, LED, 1-FACE, 3-SECTION, BRACKET MOUNTED
1	EACH	SIGNAL HEAD, LED, 1-FACE, 5-SECTION, BRACKET MOUNTED
2	EACH	SIGNAL HEAD, LED, 1-FACE, 5-SECTION, MAST ARM MOUNTED
1	EACH	SIGNAL HEAD, LED, 2-FACE, 1-3 SECTION, 1-5 SECTION, BRACKET MOUNTED
2	EACH	PEDESTRIAN SIGNAL HEAD, LED, 1-FACE, BRACKET MOUNTED WITH COUNTDOWN TIMER
1	EACH	PEDESTRIAN SIGNAL HEAD, LED, 2-FACE, BRACKET MOUNTED WITH COUNTDOWN TIMER
6	EACH	TRAFFIC SIGNAL BACKPLATE, LOUVERED, ALUMINUM
6	EACH	INDUCTIVE LOOP DETECTOR
183	FOOT	DETECTOR LOOP, TYPE I
2	EACH	LIGHT DETECTOR
1	EACH	LIGHT DETECTOR AMPLIFIER
4	EACH	PEDESTRIAN PUSH-BUTTON
50	FOOT	REMOVE ELECTRIC CABLE FROM CONDUIT
144	FOOT	REMOVE AND REINSTALL ELECTRIC CABLE FROM CONDUIT
1	EACH	REMOVE EXISTING TRAFFIC SIGNAL EQUIPMENT
1	EACH	VIDEO VEHICLE DETECTION SYSTEM
1	EACH	SERVICE INSTALLATION, POLE MOUNTED
5	EACH	GROUNDING EXISTING HANDHOLE FRAME AND COVER
1	EACH	UNINTERRUPTIBLE POWER SUPPLY
294	FOOT	ELECTRIC CABLE IN CONDUIT, GROUNDING, NO. 6 1C
249	FOOT	ELECTRIC CABLE IN CONDUIT, NO. 20 3/C, TWISTED, SHIELDED

NOTE:
THE TRAFFIC SIGNAL CONTROL EQUIPMENT FOR THIS PROJECT SHALL BE "ECONOLITE" TO ENSURE COMPATIBILITY WITH A FUTURE INTERCONNECT

NOTE:
THE EMERGENCY VEHICLE PREEMPTION EQUIPMENT FOR THIS PROJECT SHALL BE "3M OPTICOM" TO MEET THE TOWN OF CICERO REQUIREMENTS

I.D.O.T. TRAFFIC SIGNAL INSTALLATION ELECTRICAL SERVICE REQUIREMENTS					TOTAL WATTAGE
TYPE	NO. LAMPS	WATTAGE (INCAND.)	LED	% OPERATION	
SIGNAL (RED)	11		17	0.50	93.5
(YELLOW)	11		25	0.25	68.75
(GREEN)	11		15	0.25	41.25
ARROW	8		12	0.10	9.6
PED. SIGNAL	4		25	1.00	100.0
CONTROLLER	1		100	1.00	100.0
ILLUM. SIGN				0.05	
FLASHER				0.50	
TOTAL =					413.1

ENERGY COSTS TO:
TOWN OF CICERO
4949 WEST CERMAK ROAD
CICERO, ILLINOIS 60804
ENERGY SUPPLY CONTACT: MIKE BELL
PHONE: (708) 410-5314
COMPANY: COMED

PROJECT: **TOWN OF CICERO, ILLINOIS
CENTRAL AVENUE RESURFACING
SECTION 03-00193-00-FP**

REVISIONS			
NO.	BY	DATE	DESCRIPTION
1	THK/DMS	1-22-10	PER IDOT REVIEW
2	THK/DMS	3-03-10	PER IDOT REVIEW

**CABLE PLAN, PHASE DESIGNATION DIAGRAM, EVP SEQUENCE AND SCHEDULE OF QUANTITIES
CENTRAL AVE AT 26TH ST**

PROJECT NO. 05043	SCALE NONE	SHEET 28 OF 51 SHEETS
DRAWN/DESIGNED JFP/THK-DMS	DATE DEC., 2009	
CHECKED/APPROVED TPG/THK	FIELD BOOK NO. FILE	