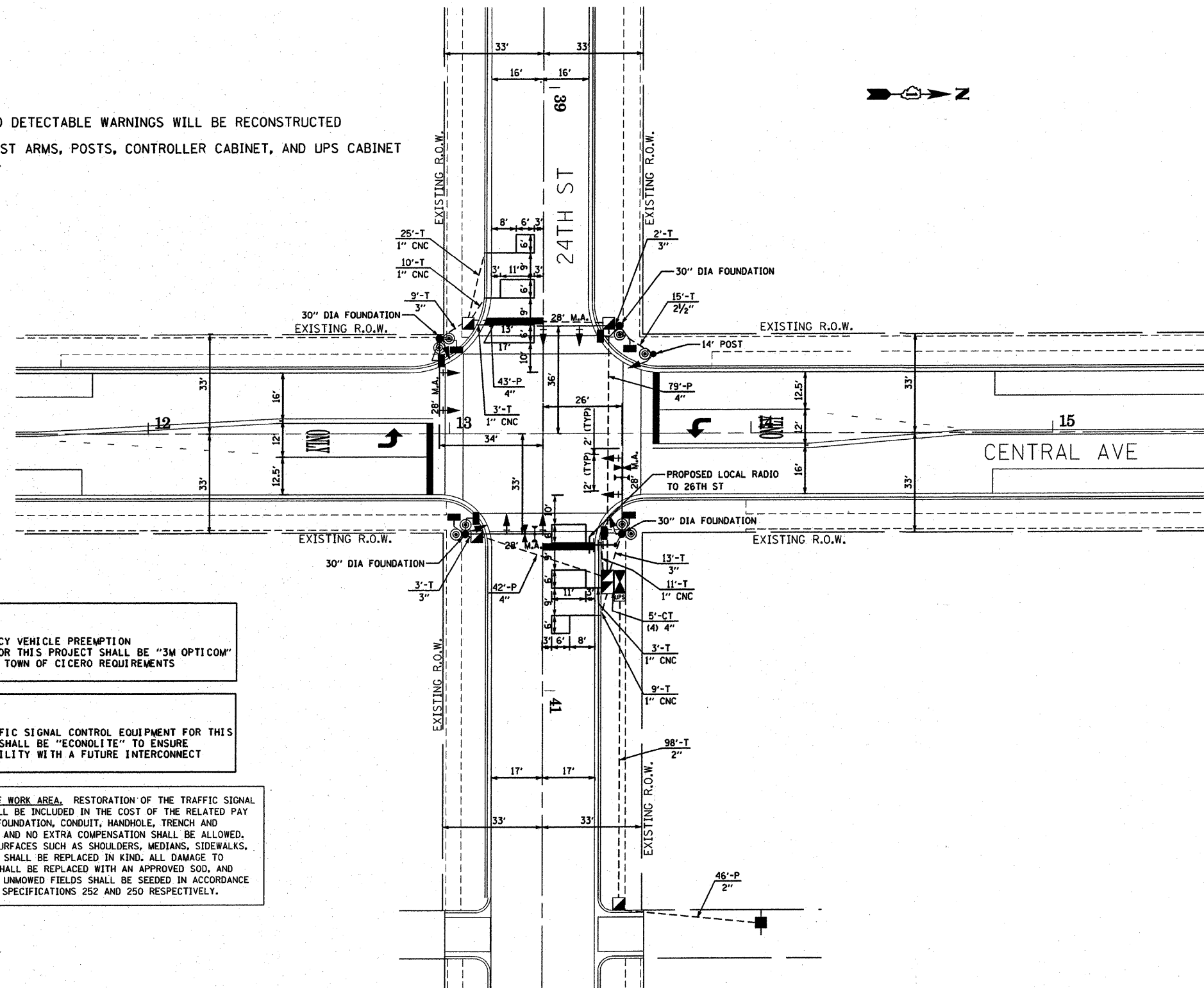


FAU RTE	SECTION	COUNTY	TOTAL SHEETS	SHEET NO.
279B	03-00193-00-FP	COOK	51	35
F.H.W.A. REG.	ILLINOIS	PROJECT	M-9003(488)	

CONTRACT NO. 63485
4

NOTE:

1. SIDEWALK, ADA RAMP AND DETECTABLE WARNINGS WILL BE RECONSTRUCTED (SEE ROADWAY PLANS)
2. ALL PROPOSED SIGNAL MAST ARMS, POSTS, CONTROLLER CABINET, AND UPS CABINET SHALL BE PAINTED BLACK



NOTE:
THE EMERGENCY VEHICLE PREEMPTION EQUIPMENT FOR THIS PROJECT SHALL BE "3M OPTICOM" TO MEET THE TOWN OF CICERO REQUIREMENTS

NOTE:
THE TRAFFIC SIGNAL CONTROL EQUIPMENT FOR THIS PROJECT SHALL BE "ECONOLITE" TO ENSURE COMPATIBILITY WITH A FUTURE INTERCONNECT

RESTORATION OF WORK AREA. RESTORATION OF THE TRAFFIC SIGNAL WORK AREA SHALL BE INCLUDED IN THE COST OF THE RELATED PAY ITEM SUCH AS FOUNDATION, CONDUIT, HANDHOLE, TRENCH AND BACKFILL, ETC., AND NO EXTRA COMPENSATION SHALL BE ALLOWED. ALL ROADWAY SURFACES SUCH AS SHOULDERS, MEDIANS, SIDEWALKS, PAVEMENT, ETC. SHALL BE REPLACED IN KIND. ALL DAMAGE TO MOWED LAWNS SHALL BE REPLACED WITH AN APPROVED SOD, AND ALL DAMAGE TO UNMOWED FIELDS SHALL BE SEEDED IN ACCORDANCE WITH STANDARD SPECIFICATIONS 252 AND 250 RESPECTIVELY.

KLOA
Kenig, Lindgren, O'Hara, Aboona, Inc.
9675 West Higgins Road, Suite 400
Rosemont, Illinois 60018
P: (847) 518-0990 F: (847) 518-9987
PROJECT # 09-168

IMPORTANT!
FULL SIZE PLANS HAVE BEEN PREPARED USING STANDARD ENGINEERING SCALES. REDUCED SIZED PLANS WILL NOT CONFORM TO STANDARD SCALES INDICATED IN TITLE BLOCK.

Frank Novotny & Associates, Inc.
Civil Engineers
825 Midway Drive ♦ Willowbrook, IL ♦ 60527 ♦ Telephone: (630) 887-8640 ♦ Fax: (630) 887-0132
Illinois Professional Design Firm No. 184-000928

PROJECT
**TOWN OF CICERO, ILLINOIS
CENTRAL AVENUE RESURFACING
SECTION 03-00193-00-FP**

REVISIONS			
NO.	BY	DATE	DESCRIPTION
1	THK/DMS	1-22-10	PER IDOT REVIEW
2	THK/DMS	2-8-10	PER IDOT REVIEW

**TRAFFIC SIGNAL
INSTALLATION PLAN
CENTRAL AVE AT 24TH ST**

PROJECT NO. 05043	SCALE 1"=20'
DRAWN/DESIGNED JFP/THK-DMS	DATE DEC., 2009
CHECKED/APPROVED TPG/THK	FIELD BOOK NO. FILE

SHEET
35
OF
51
SHEETS