

FAU RTE	SECTION	COUNTY	TOTAL SHEETS	SHEET NO.
279B	03-00193-00-FP	COOK	51	37
F.H.W.A. REG.	ILLINOIS	PROJECT	M-9003(488)	

CONTRACT NO. 63485
4

THE FOLLOWING EXISTING TRAFFIC SIGNAL EQUIPMENT SHALL BE REMOVED BY THE CONTRACTOR AND SHALL REMAIN THE PROPERTY OF THE AGENCY LISTED BELOW. THE CONTRACTOR SHALL SAFELY STORE AND ARRANGE FOR PICK UP OF ALL EQUIPMENT TO BE RETURNED TO THE LISTED AGENCY AS PER THE TRAFFIC SIGNAL SPECIFICATIONS.

AGENCY: TOWN OF CICERO

- 1 EACH CONTROLLER AND CABINET, COMPLETE
- 1 EACH LIGHT DETECTOR

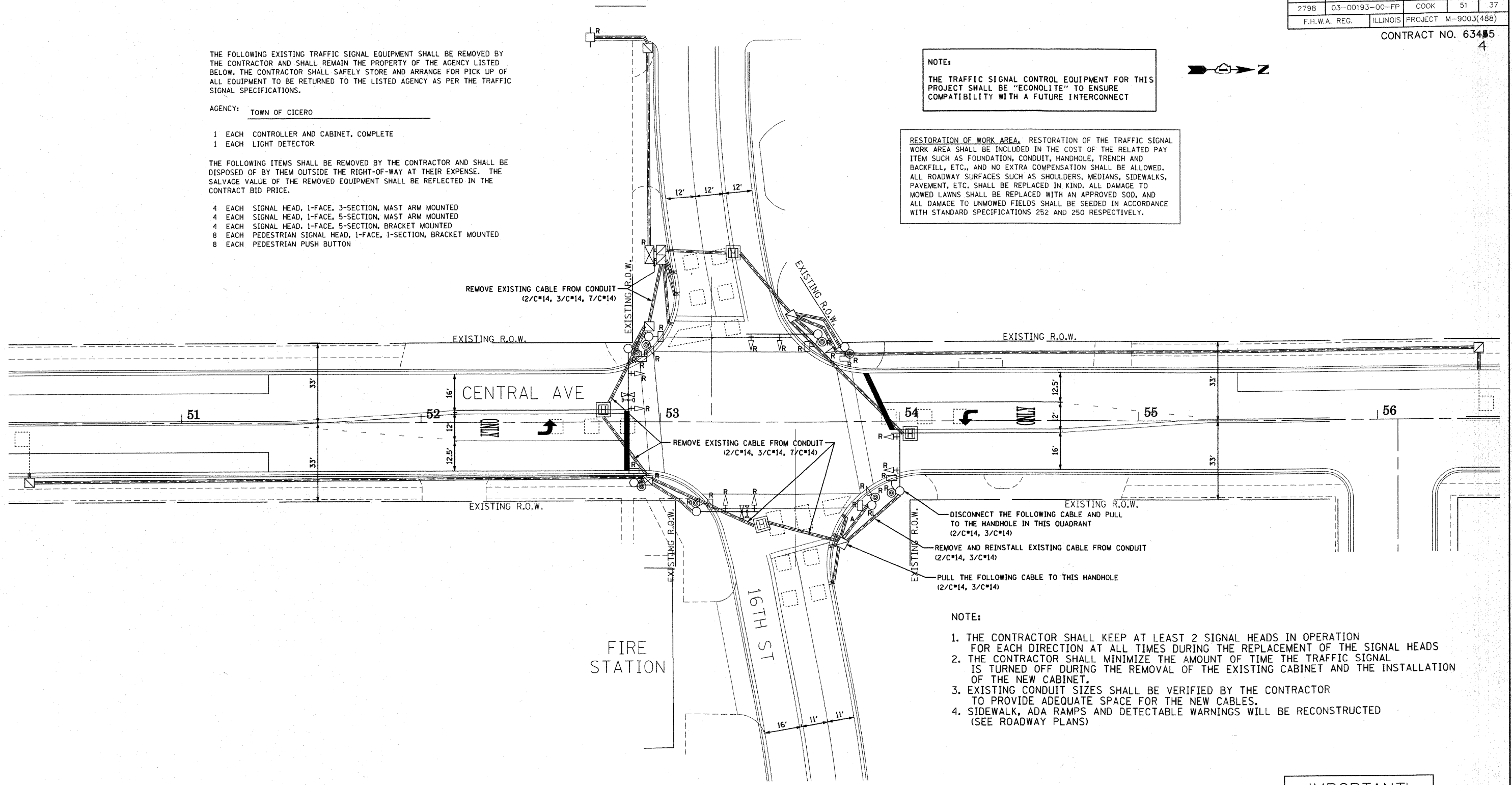
THE FOLLOWING ITEMS SHALL BE REMOVED BY THE CONTRACTOR AND SHALL BE DISPOSED OF BY THEM OUTSIDE THE RIGHT-OF-WAY AT THEIR EXPENSE. THE SALVAGE VALUE OF THE REMOVED EQUIPMENT SHALL BE REFLECTED IN THE CONTRACT BID PRICE.

- 4 EACH SIGNAL HEAD, 1-FACE, 3-SECTION, MAST ARM MOUNTED
- 4 EACH SIGNAL HEAD, 1-FACE, 5-SECTION, MAST ARM MOUNTED
- 4 EACH SIGNAL HEAD, 1-FACE, 5-SECTION, BRACKET MOUNTED
- 8 EACH PEDESTRIAN SIGNAL HEAD, 1-FACE, 1-SECTION, BRACKET MOUNTED
- 8 EACH PEDESTRIAN PUSH BUTTON

NOTE:
THE TRAFFIC SIGNAL CONTROL EQUIPMENT FOR THIS PROJECT SHALL BE "ECONOLITE" TO ENSURE COMPATIBILITY WITH A FUTURE INTERCONNECT



RESTORATION OF WORK AREA. RESTORATION OF THE TRAFFIC SIGNAL WORK AREA SHALL BE INCLUDED IN THE COST OF THE RELATED PAY ITEM SUCH AS FOUNDATION, CONDUIT, HANDHOLE, TRENCH AND BACKFILL, ETC., AND NO EXTRA COMPENSATION SHALL BE ALLOWED. ALL ROADWAY SURFACES SUCH AS SHOULDERS, MEDIANS, SIDEWALKS, PAVEMENT, ETC. SHALL BE REPLACED IN KIND. ALL DAMAGE TO MOWED LAWNS SHALL BE REPLACED WITH AN APPROVED SOD, AND ALL DAMAGE TO UNMOWED FIELDS SHALL BE SEEDED IN ACCORDANCE WITH STANDARD SPECIFICATIONS 252 AND 250 RESPECTIVELY.



- DISCONNECT THE FOLLOWING CABLE AND PULL TO THE HANDHOLE IN THIS QUADRANT (2/C*14, 3/C*14)
- REMOVE AND REINSTALL EXISTING CABLE FROM CONDUIT (2/C*14, 3/C*14)
- PULL THE FOLLOWING CABLE TO THIS HANDHOLE (2/C*14, 3/C*14)

- NOTE:
1. THE CONTRACTOR SHALL KEEP AT LEAST 2 SIGNAL HEADS IN OPERATION FOR EACH DIRECTION AT ALL TIMES DURING THE REPLACEMENT OF THE SIGNAL HEADS
 2. THE CONTRACTOR SHALL MINIMIZE THE AMOUNT OF TIME THE TRAFFIC SIGNAL IS TURNED OFF DURING THE REMOVAL OF THE EXISTING CABINET AND THE INSTALLATION OF THE NEW CABINET.
 3. EXISTING CONDUIT SIZES SHALL BE VERIFIED BY THE CONTRACTOR TO PROVIDE ADEQUATE SPACE FOR THE NEW CABLES.
 4. SIDEWALK, ADA RAMPS AND DETECTABLE WARNINGS WILL BE RECONSTRUCTED (SEE ROADWAY PLANS)

IMPORTANT!
FULL SIZE PLANS HAVE BEEN PREPARED USING STANDARD ENGINEERING SCALES. REDUCED SIZED PLANS WILL NOT CONFORM TO STANDARD SCALES INDICATED IN TITLE BLOCK.

KLOA
Kenig, Lindgren, O'Hara, Aboona, Inc.
9575 West Higgins Road, Suite 400
Rosemont, Illinois 60018
P: (847) 618-9900 F: (847) 618-9987
PROJECT # 09-158

Frank Novotny & Associates, Inc.
Civil Engineers
825 Midway Drive ♦ Willowbrook, IL ♦ 60527 ♦ Telephone: (630) 887-8640 ♦ Fax: (630) 887-0132
Illinois Professional Design Firm No. 184-000928

PROJECT
**TOWN OF CICERO, ILLINOIS
CENTRAL AVENUE RESURFACING
SECTION 03-00193-00-FP**

REVISIONS			
NO.	BY	DATE	DESCRIPTION
1	THK/DMS	1-22-10	PER IDOT REVIEW

**TRAFFIC SIGNAL REMOVAL
PLAN
CENTRAL AVE AT 16TH ST**

PROJECT NO. 05043	SCALE 1"=20'	SHEET 37 OF 51 SHEETS
DRAWN/DESIGNED JFP/THK-DMS	DATE DEC., 2009	
CHECKED/APPROVED TPG/THK	FIELD BOOK NO. FILE	