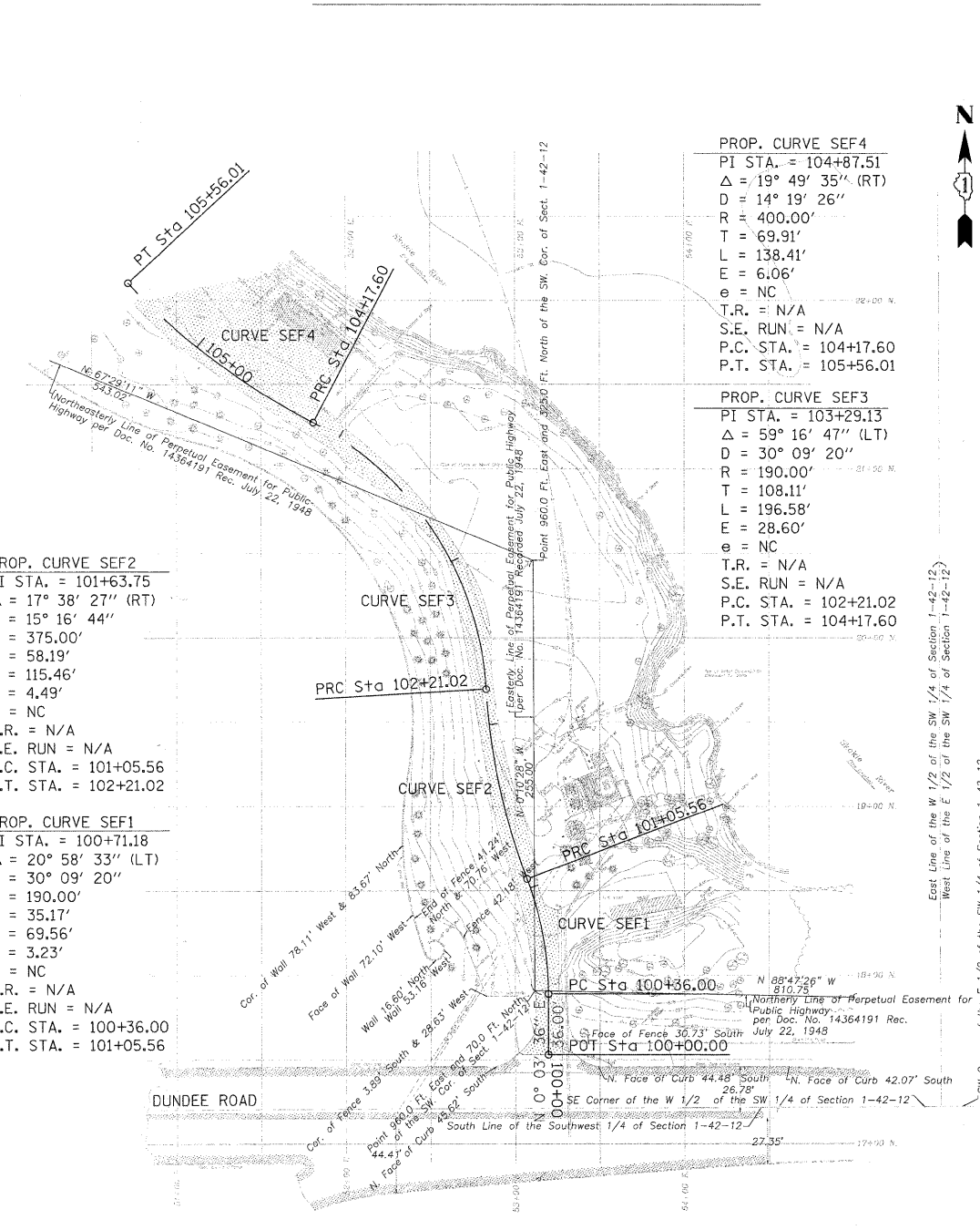
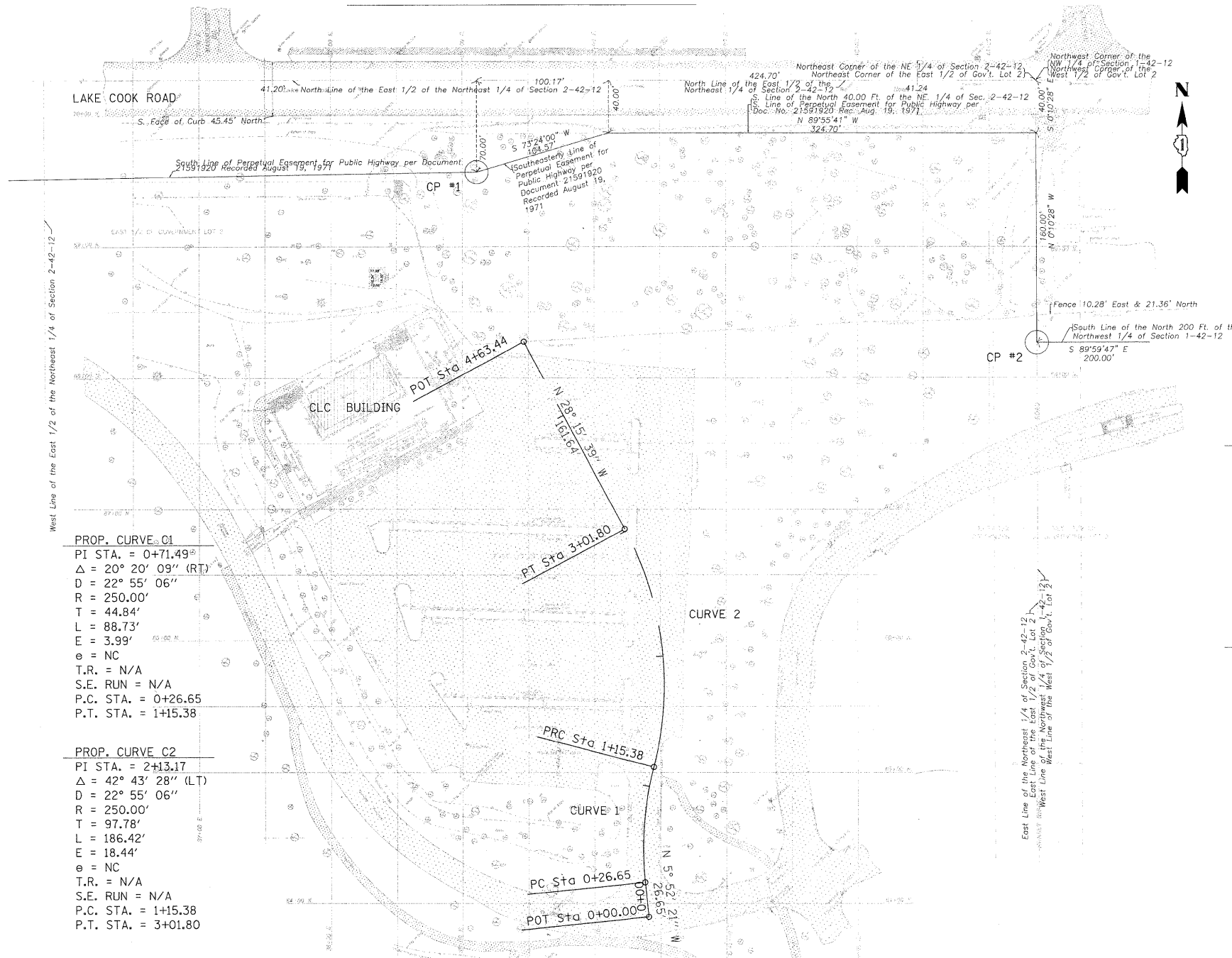


CHILDREN'S LEARNING CENTER CAMPUS

SOUTH-END FACILITY



**PROP. CURVE C1**  
 PI STA. = 0+71.49  
 $\Delta = 20^\circ 20' 09''$  (RT)  
 D = 22° 55' 06"  
 R = 250.00'  
 T = 44.84'  
 L = 88.73'  
 E = 3.99'  
 e = NC  
 T.R. = N/A  
 S.E. RUN = N/A  
 P.C. STA. = 0+26.65  
 P.T. STA. = 1+15.38

**PROP. CURVE C2**  
 PI STA. = 2+13.17  
 $\Delta = 42^\circ 43' 28''$  (LT)  
 D = 22° 55' 06"  
 R = 250.00'  
 T = 97.78'  
 L = 186.42'  
 E = 18.44'  
 e = NC  
 T.R. = N/A  
 S.E. RUN = N/A  
 P.C. STA. = 1+15.38  
 P.T. STA. = 3+01.80

**PROP. CURVE SEF2**  
 PI STA. = 101+63.75  
 $\Delta = 17^\circ 38' 27''$  (RT)  
 D = 15° 16' 44"  
 R = 375.00'  
 T = 58.19'  
 L = 115.46'  
 E = 4.49'  
 e = NC  
 T.R. = N/A  
 S.E. RUN = N/A  
 P.C. STA. = 101+05.56  
 P.T. STA. = 102+21.02

**PROP. CURVE SEF1**  
 PI STA. = 100+71.18  
 $\Delta = 20^\circ 58' 33''$  (LT)  
 D = 30° 09' 20"  
 R = 190.00'  
 T = 35.17'  
 L = 69.56'  
 E = 3.23'  
 e = NC  
 T.R. = N/A  
 S.E. RUN = N/A  
 P.C. STA. = 100+36.00  
 P.T. STA. = 101+05.56

**PROP. CURVE SEF4**  
 PI STA. = 104+87.51  
 $\Delta = 19^\circ 49' 35''$  (RT)  
 D = 14° 19' 26"  
 R = 400.00'  
 T = 69.91'  
 L = 138.41'  
 E = 6.06'  
 e = NC  
 T.R. = N/A  
 S.E. RUN = N/A  
 P.C. STA. = 104+17.60  
 P.T. STA. = 105+56.01

**PROP. CURVE SEF3**  
 PI STA. = 103+29.13  
 $\Delta = 59^\circ 16' 47''$  (LT)  
 D = 30° 09' 20"  
 R = 190.00'  
 T = 108.11'  
 L = 196.58'  
 E = 28.60'  
 e = NC  
 T.R. = N/A  
 S.E. RUN = N/A  
 P.C. STA. = 102+21.02  
 P.T. STA. = 104+17.60

**ALIGNMENT COORDINATES**

POT	STA.	N	E
POT 1	0+00.00	6,389.67	4,040.94
PC CURVE 1	0+26.65	6,416.18	4,038.21
PI CURVE 1	0+71.49	6,640.78	4,033.62
PRC	1+15.38	6,504.19	4,044.82
PI CURVE 2	2+13.17	6,598.88	4,069.24
PT CURVE 2	3+01.80	6,685.01	4,022.94
POT 2	4+63.44	6,827.38	3,946.41

**CONTROL POINTS**

CP	N	E
CP #1	6,957.06	3,910.76
CP #2	6,826.53	4,336.16

**BENCHMARK NOTE:**  
 ELEVATIONS SHOWN ARE MEASURED IN RELATION TO VILLAGE OF GLENCOE BENCHMARK NUMBER 464, ELEV. = 632.80 (NGVD 1929 DATUM)

**LOCATION OF BENCHMARK:**  
 NORTHWEST BOLT OF FIRE HYDRANT AT THE NORTHWEST CORNER OF PEBBLEWOOD LANE AND DUNDEE ROAD.

**ALIGNMENT COORDINATES**

POT	STA.	N	E
POT SEF1	0+00.00	1,752.95	5,319.49
PC SEF1	100+36.00	1,788.95	5,319.53
PI SEF1	100+71.18	1,824.12	5,319.57
PRC 1-2	101+05.56	1,856.98	5,307.01
PI SEF2	101+63.75	1,911.33	5,286.24
PRC 2-3	102+21.02	1,969.43	5,282.91
PI SEF3	103+29.13	2,077.36	5,276.73
PRC 3-4	104+17.60	2,127.19	5,180.79
PI SEF4	104+87.51	2,159.41	5,118.75
PT SEF4	105+56.01	2,210.76	5,071.32

