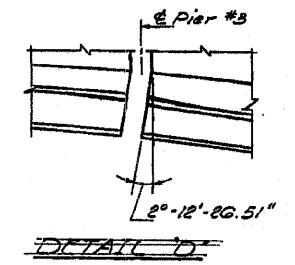
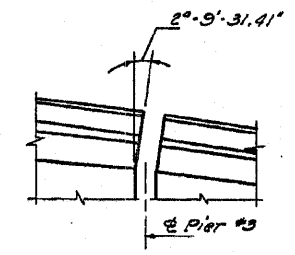
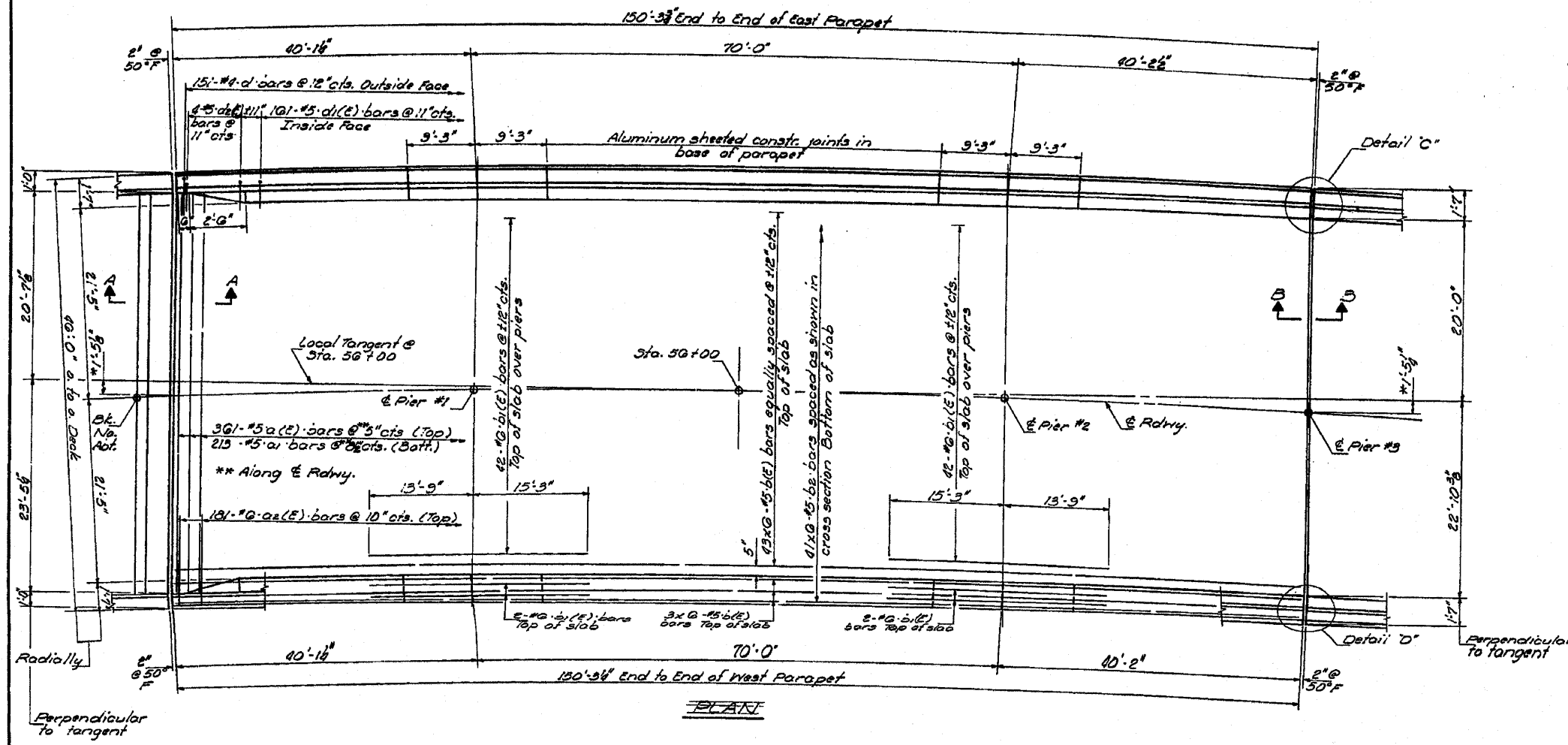


STATE OF ILLINOIS  
DEPARTMENT OF TRANSPORTATION

MINI-BAR CAPS  
#5 bars @ 1'-9"

DATE	BY	QUANTITY	TOTAL	SHEET	SHEET NO.
1/18	106BR	Carroll	46	22	19 SHEETS

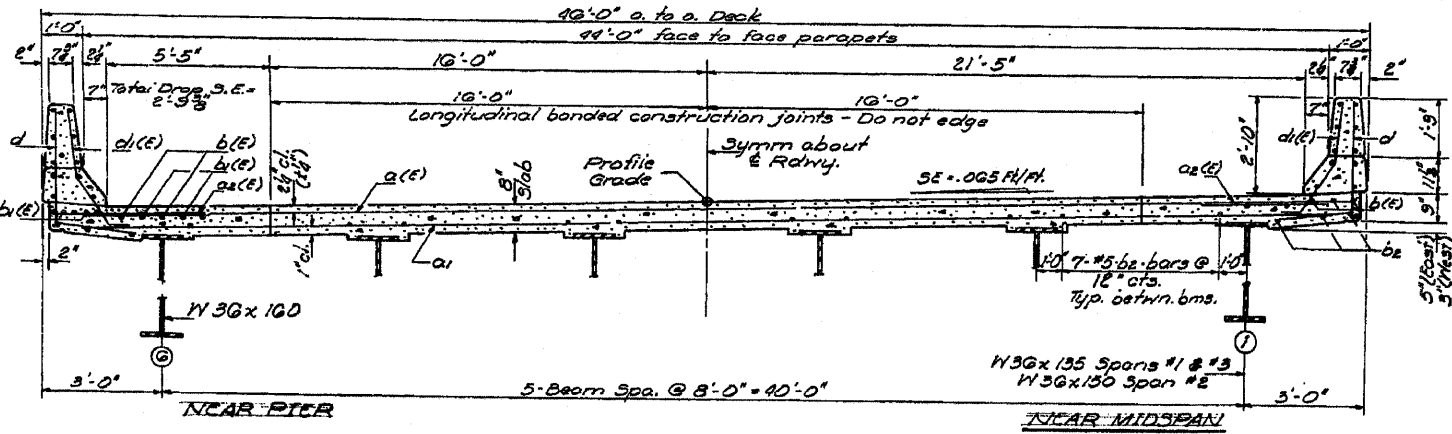
DECK POURING SEQUENCE:  
Pour Spans #4 thru #7 first in sequence from So. Abut. to Pier #3 (Spans #7, #6, #5 & #4). Then pour Spans #1 thru #3 in sequence from either end (Spans #1, #2 & #3 or Spans #3, #2 & #1).



NOTES:  
See sheet #7 for superstructure details and Bill of Material.  
Reinforcement bars designated (E) shall be epoxy coated. See Special Provisions.  
Bars indicated thus 20x3-#5 etc. indicates 20 lines of bars with 3 lengths per line.  
See sheet #7 for Section A-A & Section B-B.

DESIGNED R. F. RUSKE  
CHECKED John A. Mewis  
DRAWN J. SCHNELLER

EXAMINED *Carl E. Thompson*  
PASSED  
APPROVED



**FOR INFORMATION ONLY**

SUPERSTRUCTURE  
SPANS #1 THRU #3  
TA. RT. 18 SEC. 106BR  
CARROLL COUNTY  
STA. 36+00.0

Revised 7-29-77

FILE NAME = G:\BR\Bridg Painting\Contract\PAINTING\64F89\PLANeng.dgn	USER NAME = linkdj	DESIGNED -	REVISED -	STATE OF ILLINOIS DEPARTMENT OF TRANSPORTATION	Superstructure Spans 1 thru 3 Structure No. 008-0028	F.A. RTE. =	SECTION	COUNTY	TOTAL SHEETS	SHEET NO.
PLOT SCALE = 50,0000 / IN.	CHECKED -	REVISED -	REVISED -			D2 Bridge Painting 2010-	Various	18	6	
PLOT DATE = Wed Jan 28 08:28:09 2010	DATE -	REVISED -	REVISED -			CONTRACT NO. 64F89	ILLINOIS FED. AID PROJECT			
						SCALE: _____ SHEET NO. _____ OF _____ SHEETS STA. _____ TO STA. _____				