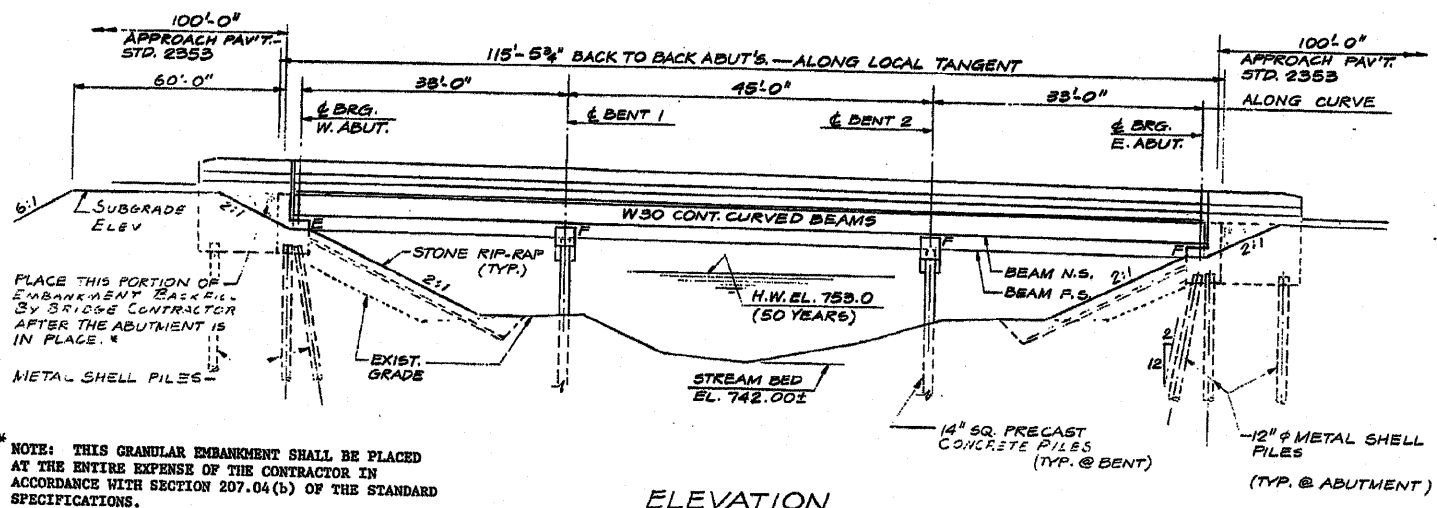
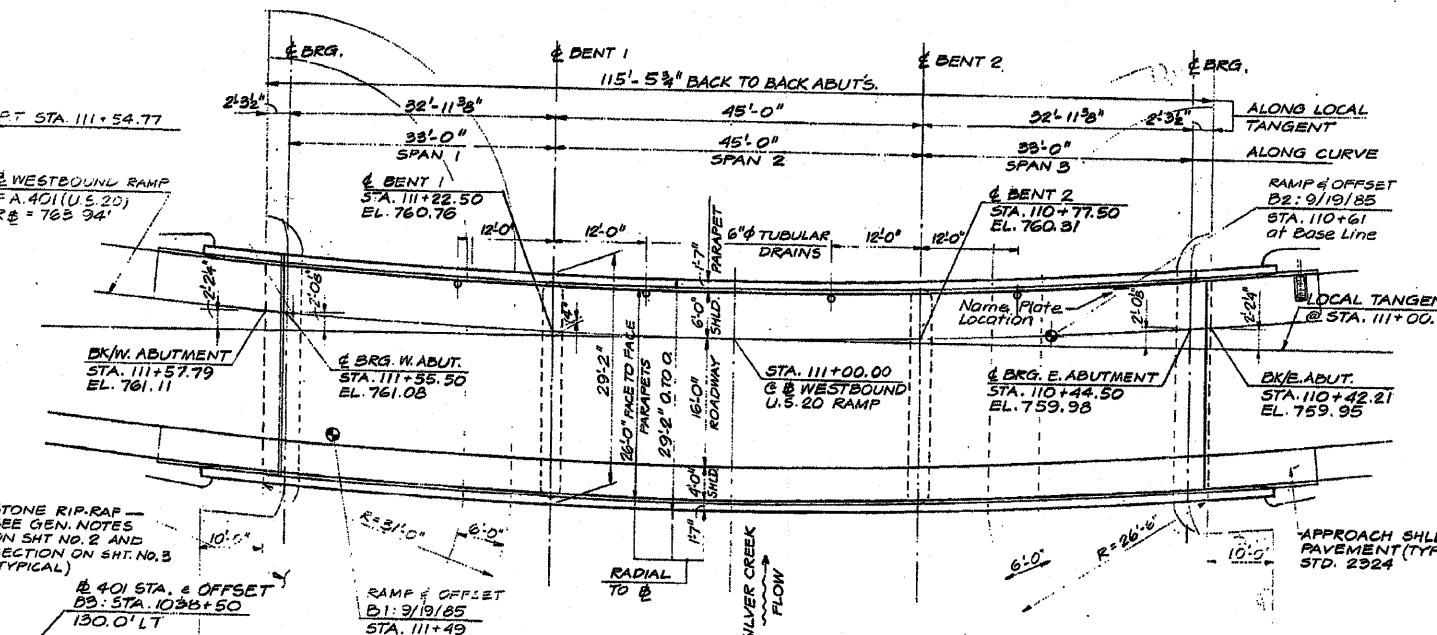


089-0060

STRUCTURE NO. 089-0060  
 D.M. #1 ELEV. 749.71 - TOP OF FIN IN MAINLINE MEDIAN  
 @ P.T. STA 104 +50.95  
 PROPOSED BY-PASS RTE. 20



\* NOTE: THIS GRANULAR EMBANKMENT SHALL BE PLACED AT THE ENTIRE EXPENSE OF THE CONTRACTOR IN ACCORDANCE WITH SECTION 207.04(b) OF THE STANDARD SPECIFICATIONS.



**CURVE DATA**  
 WESTBOUND U.S. 20 RAMP  
 P.I. STA. 109+65.92  
 $\Delta = 28^{\circ}-57'-39.60''$   
 $D = 7^{\circ}-30'-0.13''$   
 $R = 763.94'$   
 $T = 197.29'$   
 $L = 386.14'$   
 $E = 25.06'$   
 $SE = 0.08'/FT$  AND TRANS.  
 FROM STA. 110+90.77  
 TO STA. 112+82.77

STATION 111+00.0  
 BUILT 198 BY  
 STATE OF ILLINOIS  
 F.A. ROUTE 401 SECTION 177-4B-3  
 F.A. PROJECT F-401-2(21)  
 LOADING HS 20  
 STRUCTURE NO. 089-0060

NAME PLATE

**WATERWAY INFORMATION**

DRAINAGE AREA = 12.8 SQ. MI. LOW GRADE EL. 759.26 @ STA. 109+00

FLOOD	FREQ. YR.	Q. C.F.S.	OPENING SQ. FT.	NAT. EXIST.	PROP.	NAT. H.W.A.	EXIST.	PROP.	HEAD-FT. EXIST.	HEAD-FT. PROP.	HEADWATER EL.
DESIGN	50	3111	-	671	753.0	-	0.39	-	753.39		
BASE	100	3581	-	672	753.0	-	0.51	-	753.51		
OVERTOPPING											
MAX. CALC.	500	4687	-	673	753.0	-	0.88	-	754.88		

\* NOTE: ABNORMAL STAGE-WITH PECATONICA 10 YEARS DISCHARGE

**DESIGN DATA**

**DESIGN SPECIFICATIONS**  
 A.A.S.H.T.O. 1983 STANDARD SPECIFICATIONS FOR HIGHWAY BRIDGES AND 1984 INTERIM CONSTRUCTION SPECIFICATIONS

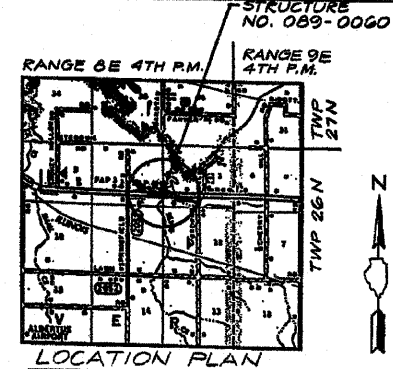
**LOADING CRITERIA**  
 LIVE LOAD: HS 20-44  
 DEAD LOAD: CALCULATED WEIGHT OF STRUCTURE PLUS 25 P.S.F. FOR FUTURE WEARING SURFACE.

**DESIGN STRESSES**  
 $f'_c = 3,500$  P.S.I.  
 $f_y = 60,000$  (REINF. BARS)  
 STRUCTURAL STEEL AASHTO M183  
 $f_y = 36,000$  P.S.I.

NON-COMPOSITE 3-SPAN

SHEET NO. 1 OF 14 SHEETS

F.A. RTE.	SECTION	COUNTY	TOTAL SHEETS	SHEET NO.
401	177-4B-3	STEPHENSON	119	44



APPROVED FOR STRUCTURAL ADMIN. ONLY  
*James J. Rayburn*

**ZEVEL BERMAN**  
 REGISTERED STRUCTURAL ENGINEER  
 STATE OF ILLINOIS NO. 2092  
 DATE \_\_\_\_\_

ILLINOIS DEPARTMENT OF TRANSPORTATION  
 DISTRICT 2  
 GENERAL PLAN AND ELEVATION  
 WESTBOUND RAMP  
 STEPHENSON COUNTY, SECTION 177-4B-3  
 F.A. 401 OVER SILVER CREEK  
 STA. 111+00.00

**REVISIONS**

NAME	DATE

**FOR INFORMATION ONLY**