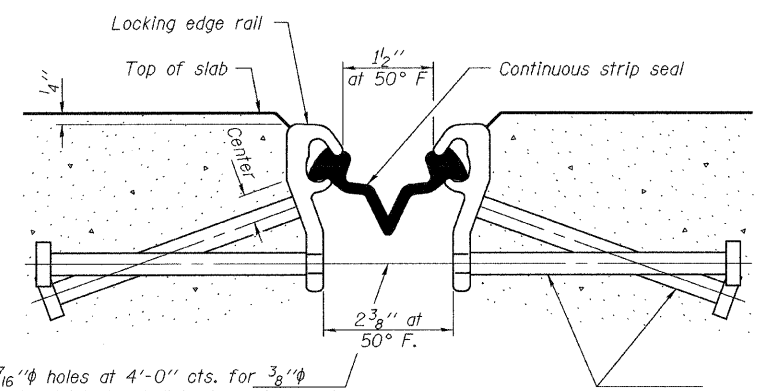


STATE OF ILLINOIS  
DEPARTMENT OF TRANSPORTATION

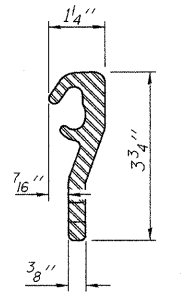
\* Omit weld at seal opening.



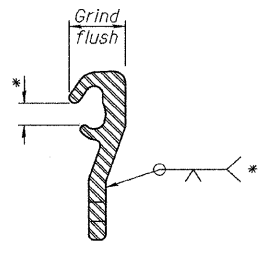
7/16"  $\phi$  holes at 4'-0" cts. for 3/8"  $\phi$  bolts. All bolts shall be burned, sawed, or chipped off flush with the plates after forms are removed, typ.

Place 1/2"  $\phi$  x 6" granular or solid flux filled headed studs conforming to Article 1006.32 of the Std. Specs., automatically end welded at 1'-0" alt. cts.

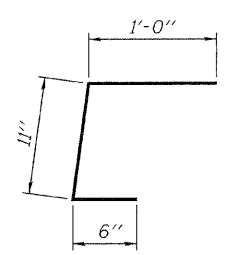
**SECTION THRU STRIP SEAL JOINT FOR OVERLAY OVER DECK BEAMS**



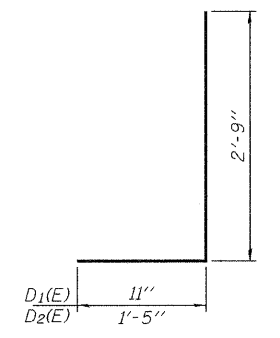
**LOCKING EDGE RAIL**



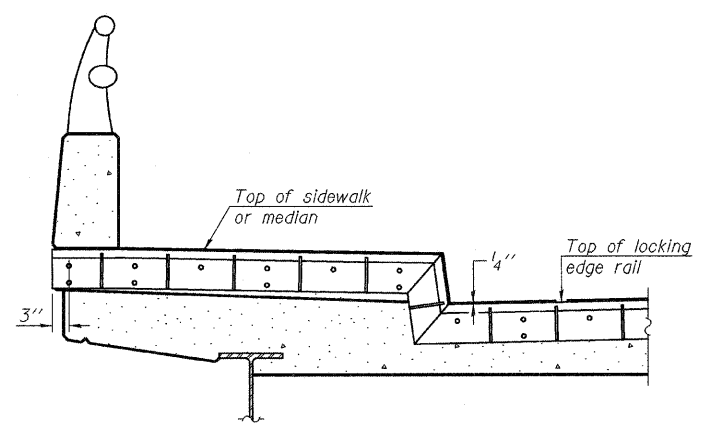
**LOCKING EDGE RAIL SPLICE**



**BAR C(E)**

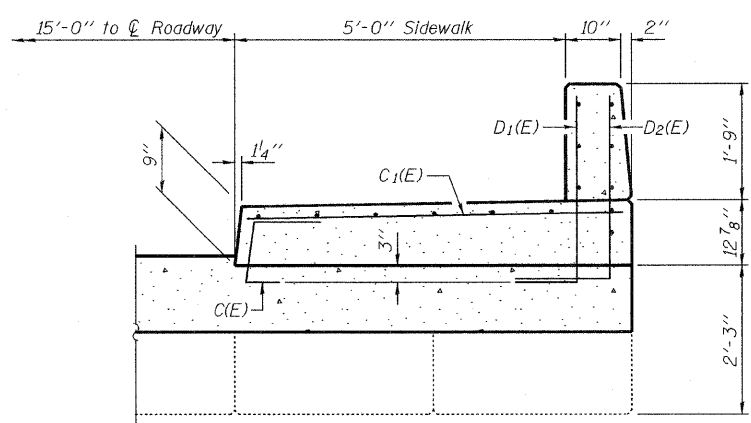


**BARS D1(E) & D2(E)**



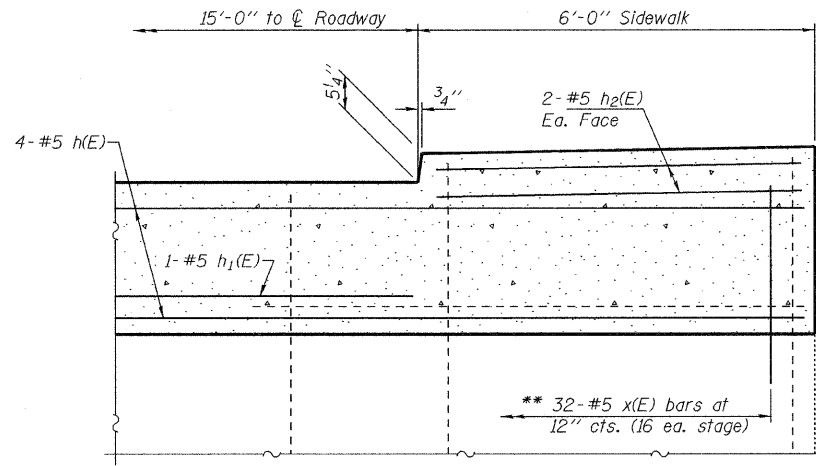
**TYPICAL END TREATMENT AT SIDEWALK**

Shorter plates with a single row of studs at 12" cts. may be necessary on medians which are shallower than 9". See manufacturer's recommendation.



**SECTION THRU DECK SIDEWALK**

Place reinforcement along skew



**SECTION THRU ABUTMENT SIDEWALK**

Place reinforcement along skew

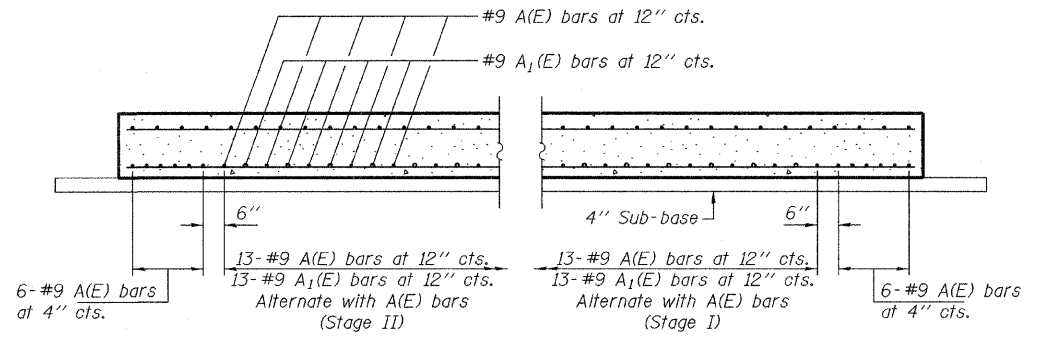
Notes:

The strip seal shall be made continuous and shall have a minimum thickness of 1/4". The configuration of the strip seal shall match the configuration of the Locking Edge Rails. Open or "webbed" strip seal gland configurations are not permitted. The gland shall be sized for a maximum rated movement of 4 inches.

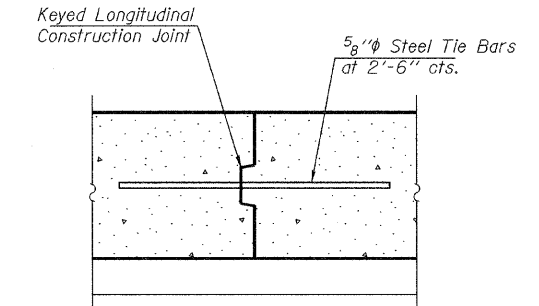
The height and thickness of the Locking Edge Rails shown are minimum dimensions. The actual configuration of the Locking Edge Rails and matching strip seal may vary from manufacturer to manufacturer. Flanged edge rails will not be allowed. Locking Edge Rails may be spliced at slope discontinuities and stage construction joints.

The manufacturer's recommended installation methods shall be followed. The joint opening and deck dimensions detailed on the superstructure are based on a rolled rail expansion joint. If the Contractor elects to use the welded rail expansion joint, the opening and deck dimensions shall be modified according to the dimensions detailed on this sheet. Required modifications shall be made at no additional cost to the State.

All steel components shall be galvanized after fabrication according to Article 520.03 of the Standard Specifications.



**SECTION C-C**



**LONGITUDINAL CONSTRUCTION JOINT**

Cost included with Reinforcement Bars, Epoxy Coated

**BILL OF MATERIAL**

Item	Unit	Total
Preformed Joint Strip Seal	Foot	44

**PREFORMED JOINT STRIP SEAL AND SIDEWALK DETAILS  
U.S. ROUTE 6 OVER GENESEO CREEK  
SN 037-0133**

SHEET NO. 3 6 SHEETS	F.A.U. RTE.	SECTION	COUNTY	TOTAL SHEETS	SHEET NO.
	5671	(4B-1)R-M	HENRY	13	8
FED. ROAD DIST. NO.		ILLINOIS FED. AID PROJECT		CONTRACT NO. 64F97	

\*\* Epoxy grout x(E) bars 9" min. into abutment cap.

DESIGNED	ATH
CHECKED	IJL
DRAWN	Kyle M. Steffen
CHECKED	ATH IJL

FEBRUARY 16, 2010  
EXAMINED *Carl Perry*  
ENGINEER OF STRUCTURAL SERVICES  
PASSED *Ralph E. Anderson*  
ENGINEER OF BRIDGES AND STRUCTURES