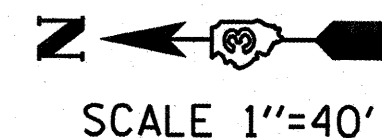
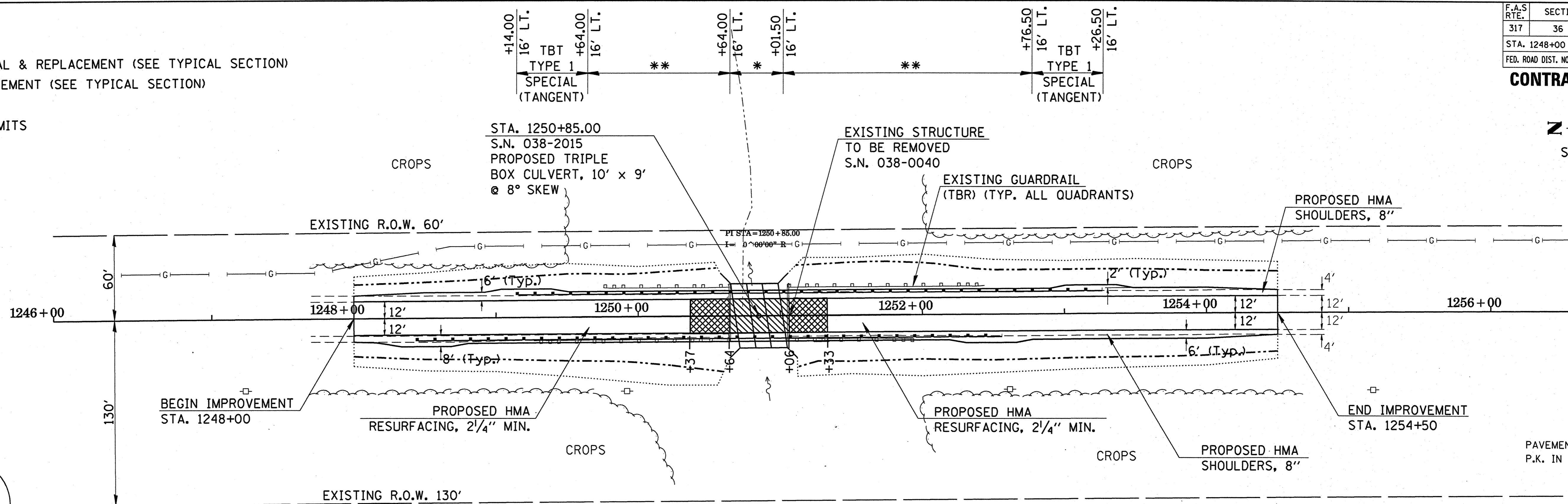


| F.A.S. RTE. | SECTION | COUNTY | TOTAL SHEETS | SHEET NO. |
|---|---------|-----------------|--------------|-----------|
| 317 | 36 BR | IROQUOIS | 21 | 6 |
| STA. 1248+00 | | TO STA. 1254+50 | | |
| FED. ROAD DIST. NO. 3 ILLINOIS FED. AID PROJECT | | | | |

CONTRACT NO. 66171

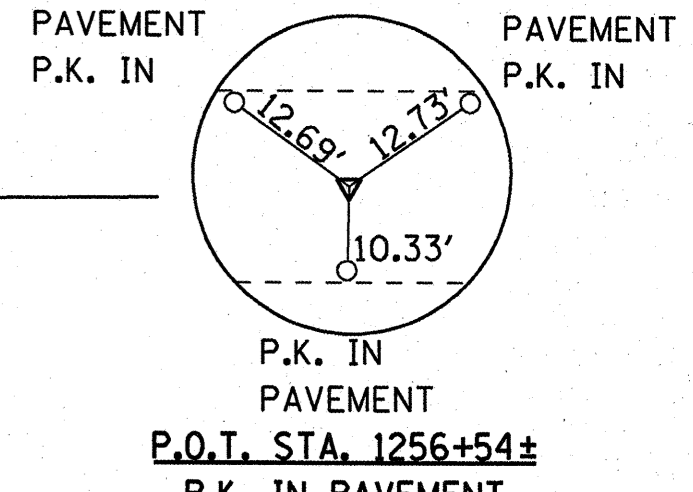
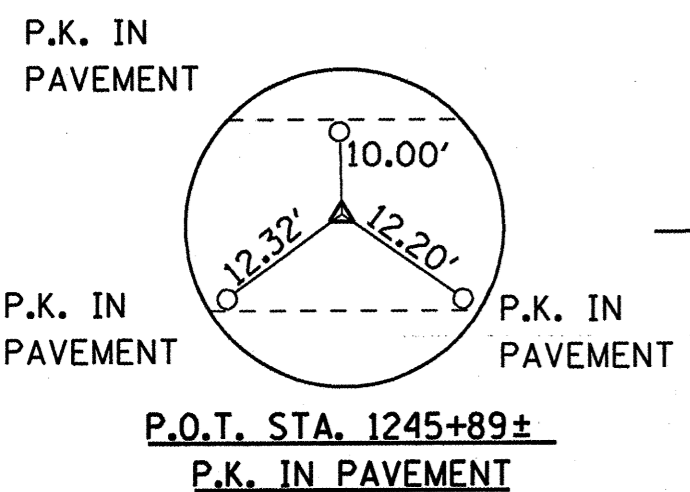


- LEGEND**
- PAVEMENT REMOVAL & REPLACEMENT (SEE TYPICAL SECTION)
 - PAVEMENT REPLACEMENT (SEE TYPICAL SECTION)
 - DITCH LINE
 - CONSTRUCTION LIMITS
 - TBR TO BE REMOVED



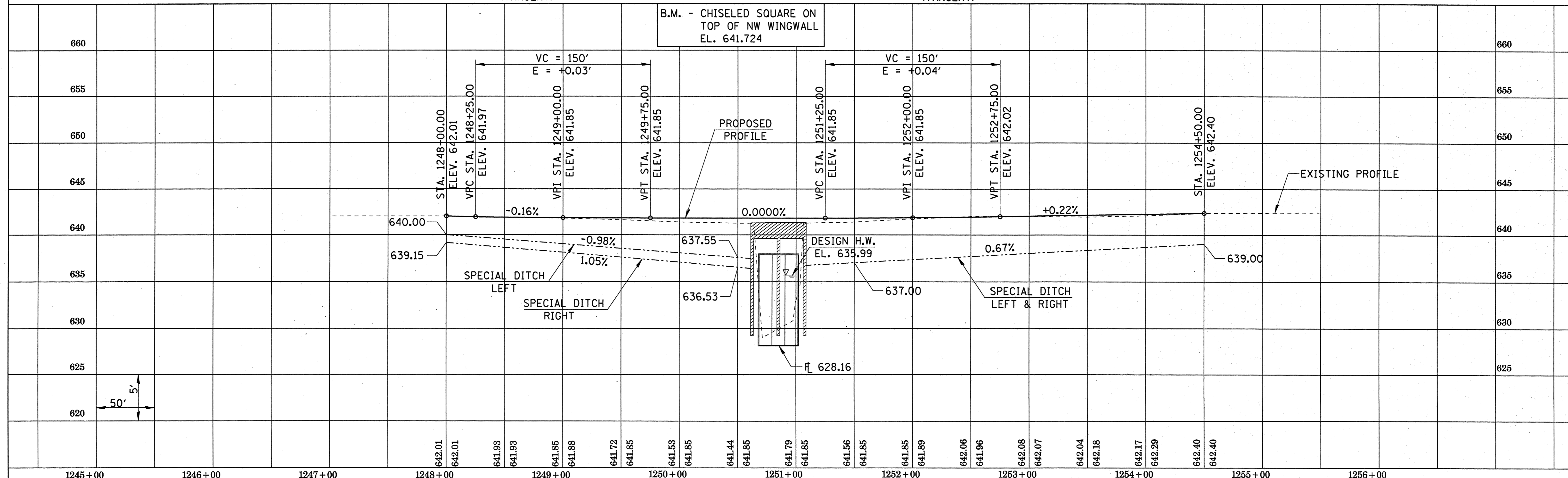
| | |
|----------|--|
| DATE | |
| BY | |
| REVISION | |
| NO. | |
| DATE | |
| BY | |
| REVISION | |
| NO. | |
| DATE | |
| BY | |
| REVISION | |
| NO. | |

| | |
|----------|--|
| PLAN | |
| NO. | |
| DATE | |
| BY | |
| REVISION | |
| NO. | |
| DATE | |
| BY | |
| REVISION | |
| NO. | |



- * STEEL PLATE BEAM GUARDRAIL ATTACHED TO STRUCTURES
- ** STEEL PLATE BEAM GUARDRAIL TYPE A 6' POST

| | |
|----------|--|
| PROFILE | |
| NO. | |
| DATE | |
| BY | |
| REVISION | |
| NO. | |
| DATE | |
| BY | |
| REVISION | |
| NO. | |



B.M. - CHISELED SQUARE ON TOP OF NW WINGWALL
EL. 641.724

1245+00 1246+00 1247+00 1248+00 1249+00 1250+00 1251+00 1252+00 1253+00 1254+00 1255+00 1256+00