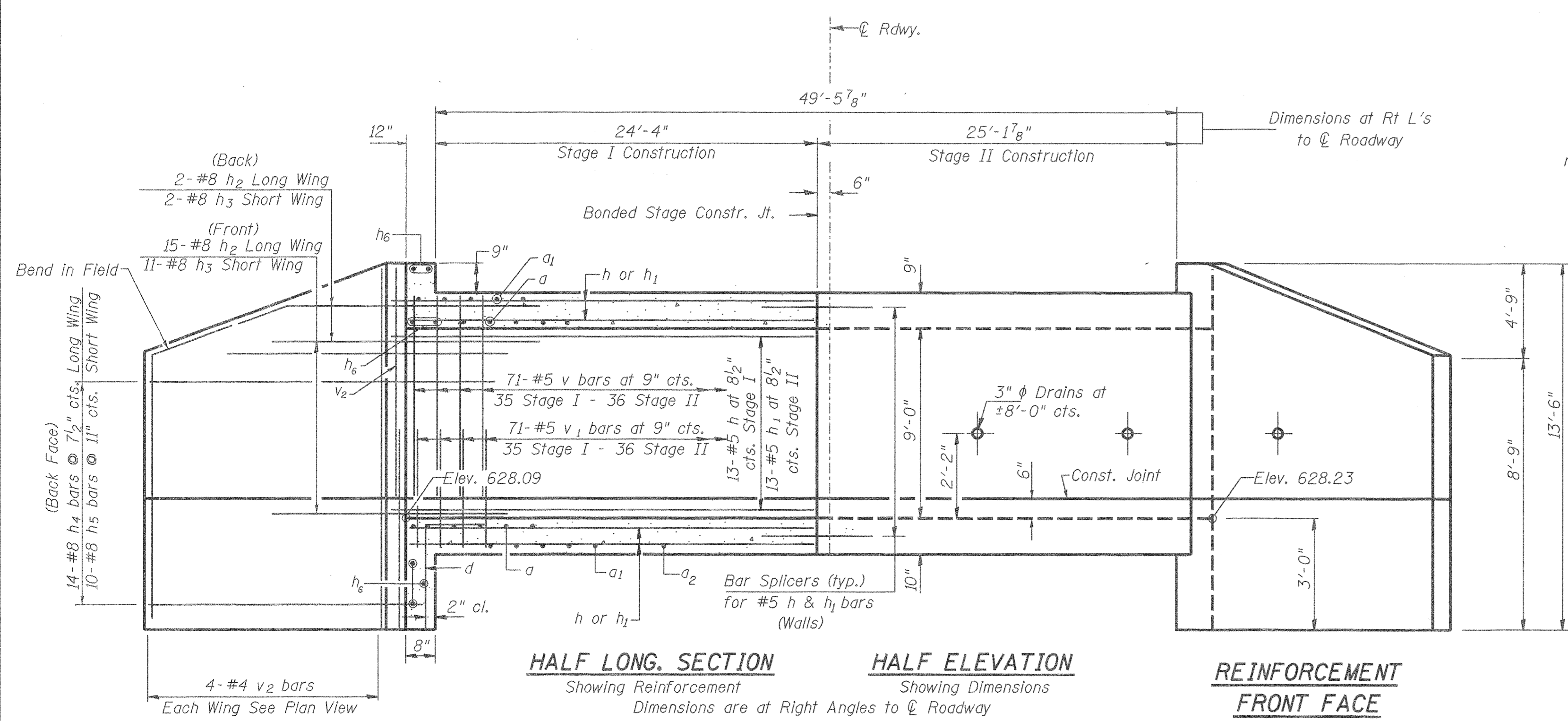


ROUTE NO.	SECTION	COUNTY	TOTAL SHEETS	SHEET NO.	SHEET NO. 5 10 SHEETS
F.A.S. 317	36-BR	IROQUOIS	21	13	
FED. ROAD DIST. NO. 7	ILLINOIS	FED. AID PROJECT-			

**CONTRACT NO. 66171**

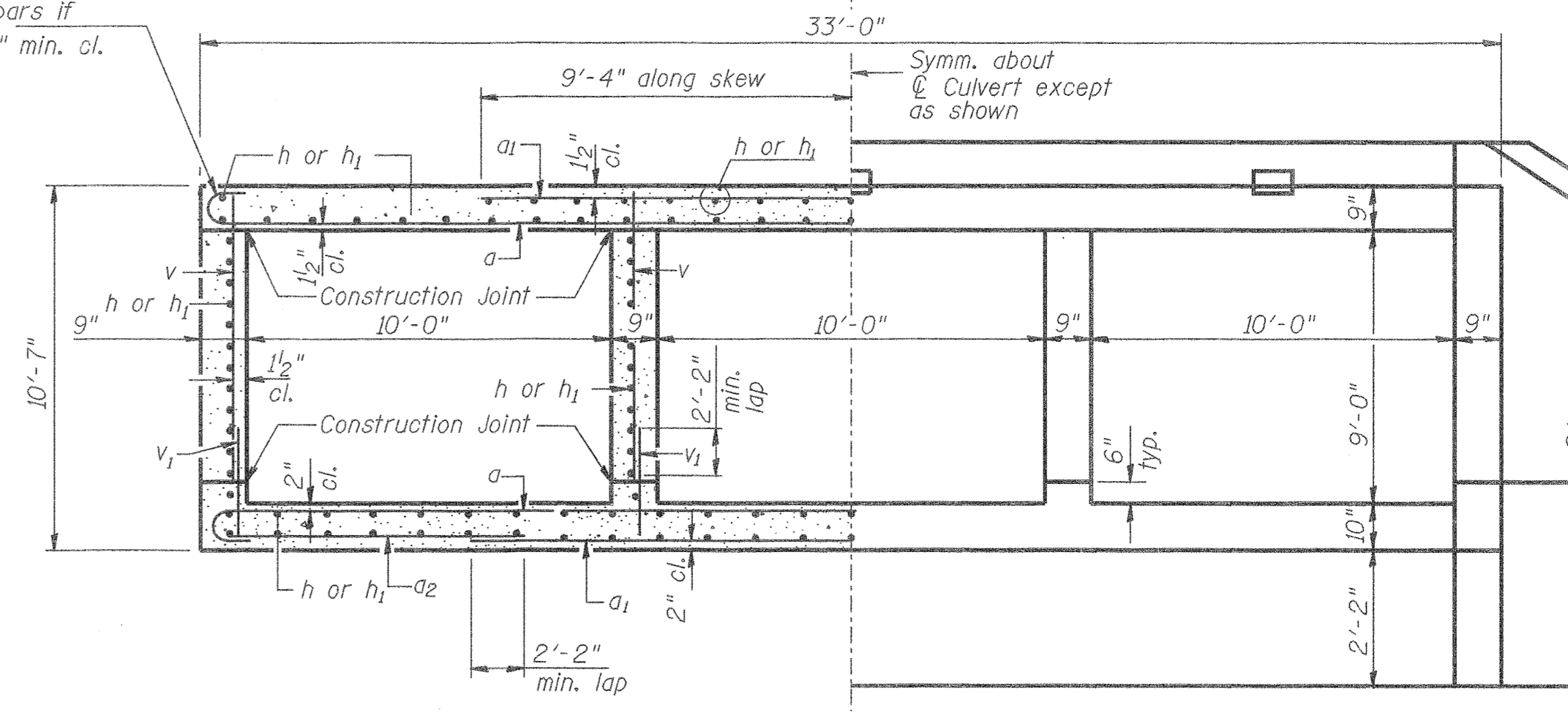


**HALF LONG SECTION**  
Showing Reinforcement  
Dimensions are at Right Angles to  $\perp$  Roadway

**HALF ELEVATION**  
Showing Dimensions  
Dimensions are at Right Angles to  $\perp$  Roadway

**REINFORCEMENT FRONT FACE**

Tilt hook of a bars if necessary for 1/2" min. cl.



**HALF SECTION THRU BARRELS**

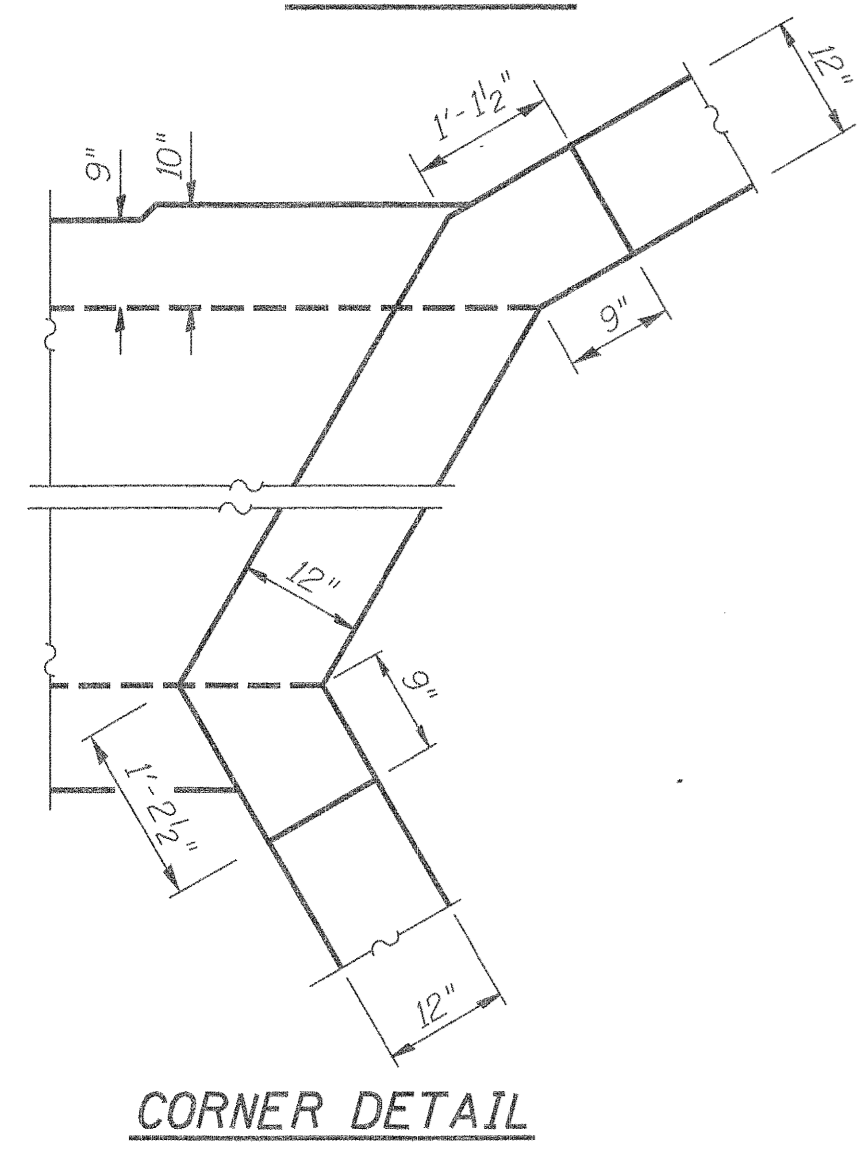
**HALF END ELEVATION**

**BILL OF MATERIAL**

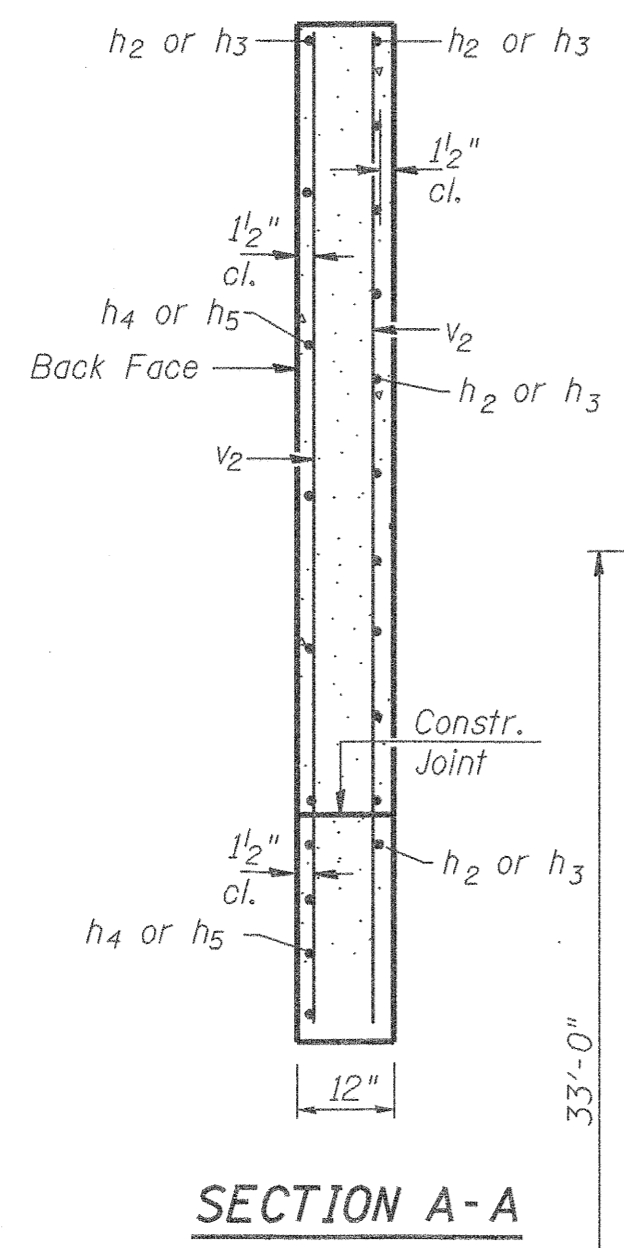
Bar	No.	Size	Length	Shape	Bar	No.	Size	Length	Shape
a	182	#6	34'-4"		v	288	#5	9'-0"	
a1	182	#6	18'-8"		v1	288	#5	3'-3"	
a2	94	#5	9'-5"		v2	16	#4	13'-3"	
d	64	#4	4'-9"						
h	154	#5	25'-4"						
h1	154	#5	26'-2"						
h2	34	#8	9'-3"						
h3	24	#8	9'-3"						
h4	28	#8	14'-7"						
h5	20	#8	13'-1"						
h6	18	#6	33'-6"						
Concrete Box Culverts									Cu. Yd. 174.7
Reinforcement Bars									Found 31,640

**Min. Bar Lap**  
#4 - 1'-8"  
#5 - 2'-2"  
#6 - 2'-7"

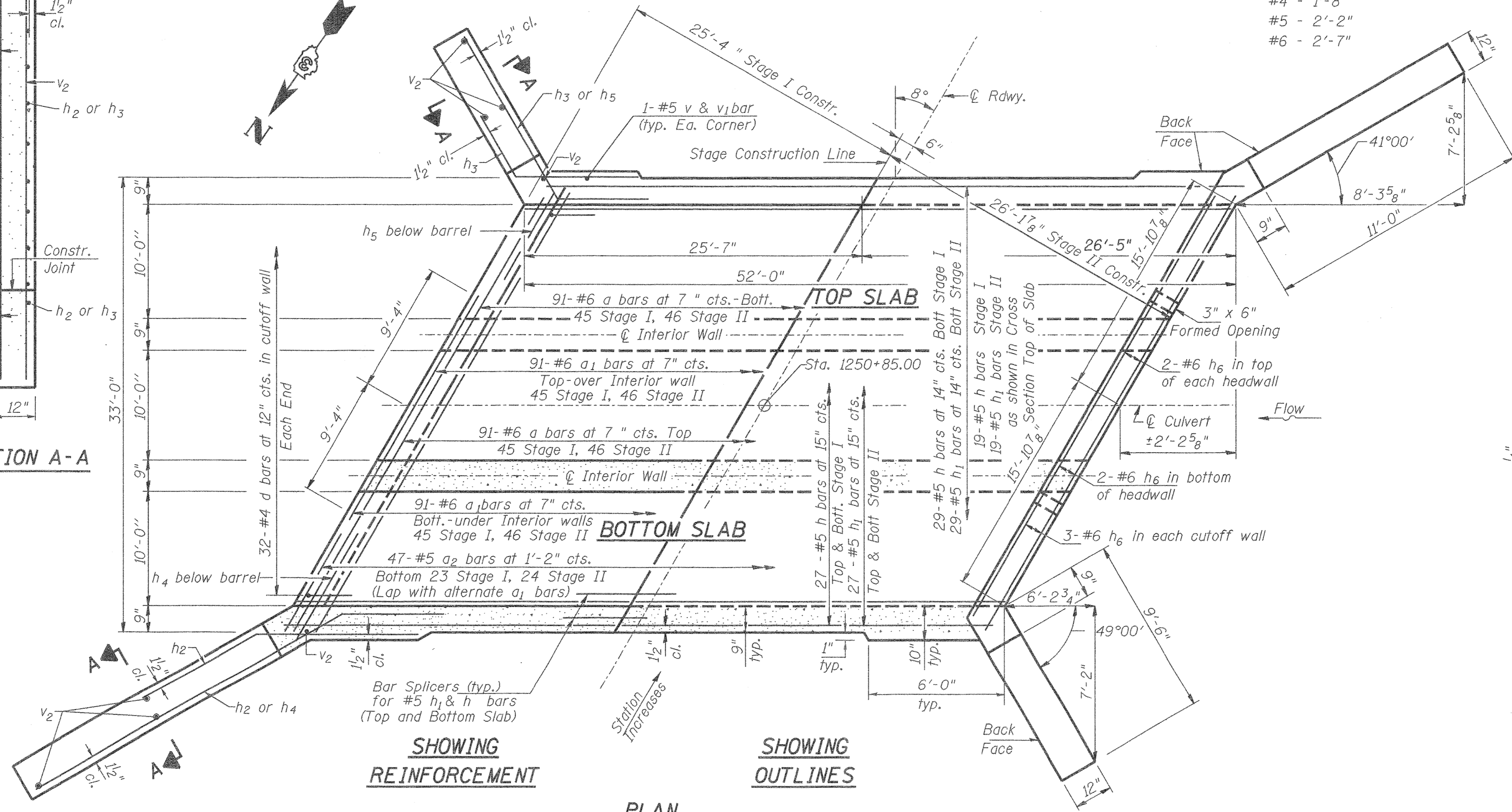
**REINFORCEMENT BACK FACE**



**CORNER DETAIL**



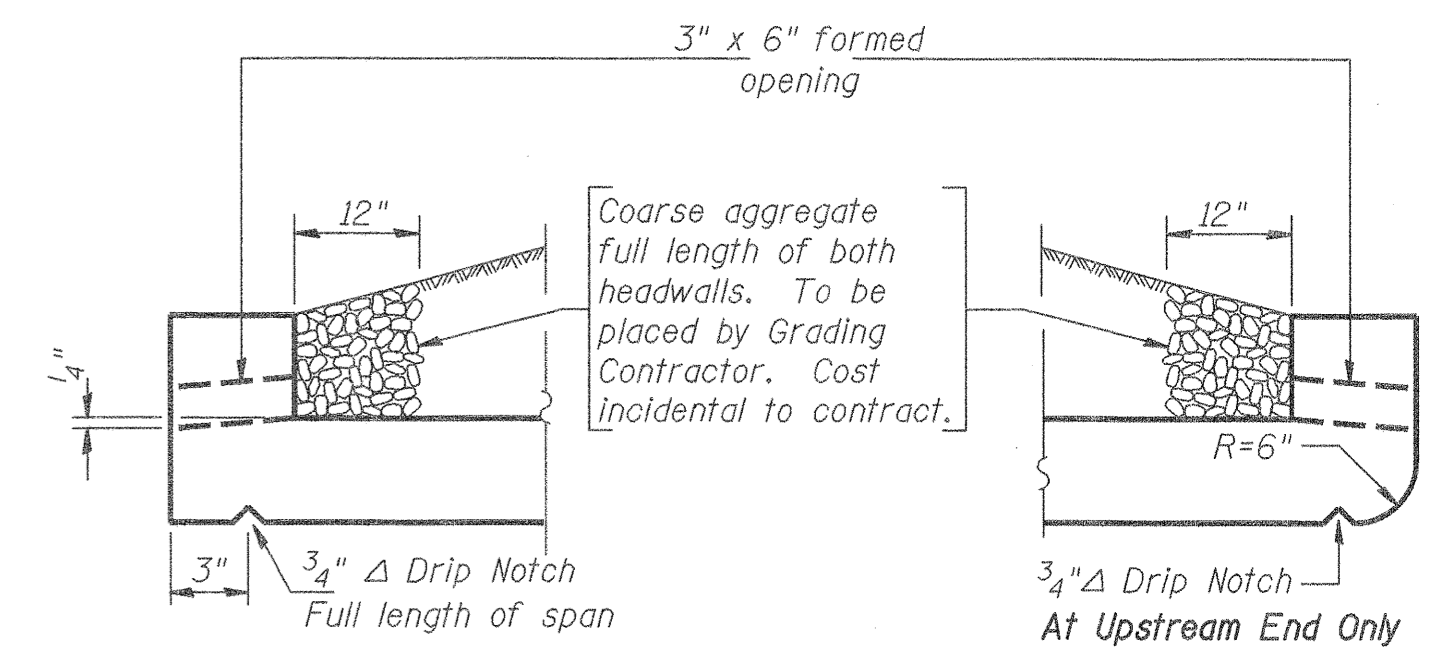
**SECTION A-A**



**SHOWING REINFORCEMENT**

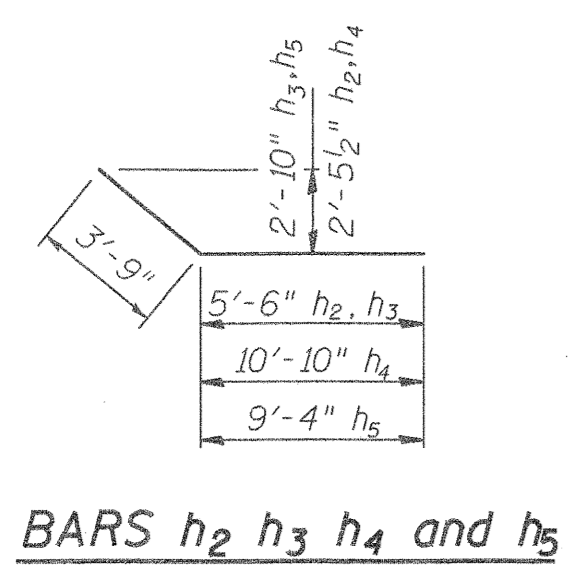
**SHOWING OUTLINES**

**PLAN**



**DRAIN DETAIL**

DESIGNED	R.K.M.
CHECKED	M.E.B.
DRAWN	M.D.
CHECKED	M.E.B.



**BARs h2 h3 h4 and h5**

**CULVERT DETAILS**  
F.A.S. ROUTE 317 (US 45) OVER  
TRIBUTARY TO SPRING CREEK  
SECTION 36-BR  
IROQUOIS COUNTY  
STA. 1250+85.00  
STRUCTURE NO. 038-2015

Note:  
A distance of not less than 6 feet of the barrel shall be poured monolithically with the wing walls.

**RC ENGINEERS, LTD.**  
CONSULTING ENGINEERS - SPRINGFIELD, ILLINOIS

98-76-038-0015/5culvertdetails.dgn