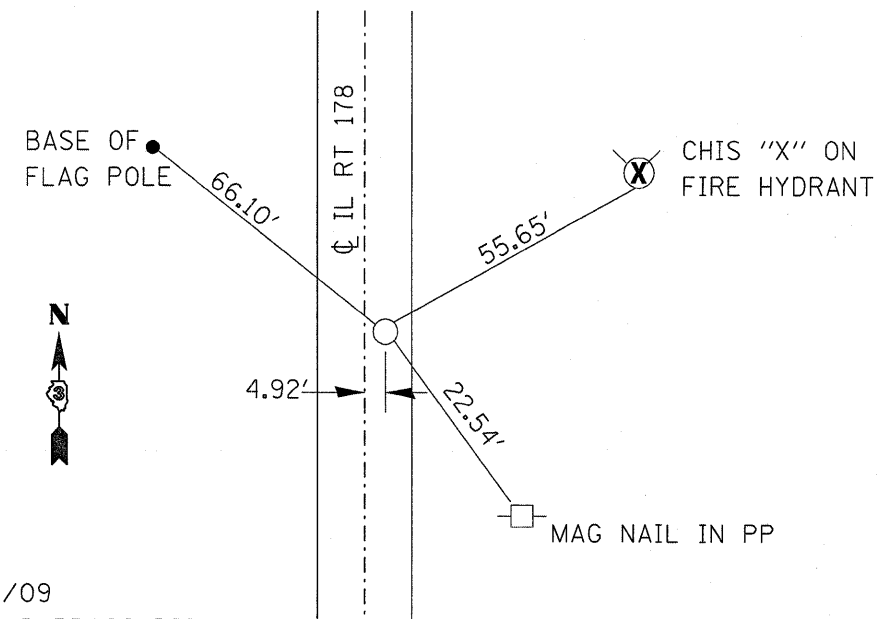


3/2/09
FOUND BRASS DISK
ON ϕ OF IL 178

TIE #1



3/2/09
FOUND BRASS DISK
4.92' E OF ϕ IL 178

TIE #2

	STATION	DESCRIPTION	EXIST MONUMENT TYPE	PROP MONUMENT TYPE	MONUMENT RECORD TO BE RECORDED	RESPONSIBILITY
TIE #1	N/A	NW COR SEC 9 T33N-R25 (VERIFIED MONUMENT)	BRASS DISK	TYPE 1	YES	2
TIE #2	N/A	SE COR SEC 8 T33N-R2E (NON-VERIFIED MONUMENT)	BRASS DISK	TYPE 1	YES	2

NOTE: FOR ALL MONUMENT LOCATIONS, SEE TIE SKETCHES

- 1) RESIDENT TO RE-ESTABLISH MONUMENT
- 2) RESIDENT TO RE-ESTABLISH MONUMENT AND FURNISH TIE SKETCHES TO D-3 PLATS AND PLANS
- 3) PROFESSIONAL LAND SURVEYOR TO RE-ESTABLISH MONUMENT, RECORD NEW MONUMENT RECORD AND PROVIDE COPY TO D-3 PLATS AND PLANS (PAY ITEM REQUIRED)

FILE NAME =	USER NAME = carpenterdj	DESIGNED -	REVISED -	STATE OF ILLINOIS DEPARTMENT OF TRANSPORTATION	TIE POINTS				F.A.S. RTE.	SECTION	COUNTY	TOTAL SHEETS	SHEET NO.		
ca:\pwork\pwidot\carpenterdj\d0172756	allahts.dgn	DRAWN -	REVISED -		SCALE:	SHEET NO.	OF	SHEETS	STA.	TO STA.	1279	(P10,P6,DRS-1)	LASALLE	19	9
	PLOT SCALE = 50.0000' / IN.	CHECKED -	REVISED -		CONTRACT NO. 66438										
	PLOT DATE = Jan 29, 2010 - 11:30:21 AM	DATE -	REVISED -		ILLINOIS FED. AID PROJECT										