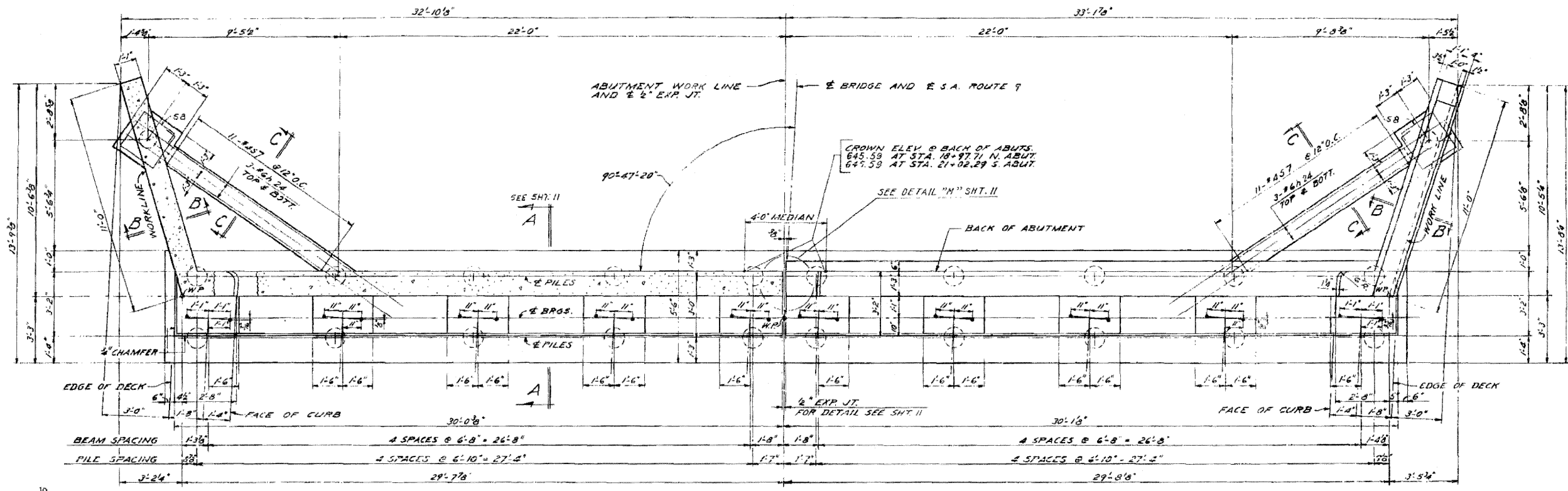


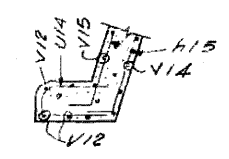
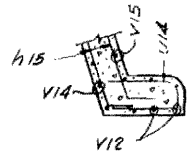
ROUTE NO.	SECTION	COUNTY	SHEET NO.	PROJECT NO.
FA 1.80	50-2HB-5	LA SALLE	492	4923
STA.	TO STA.		PROJECT	
2+0	REG NO 4		ILLINOIS	

SHEET 10 OF 16

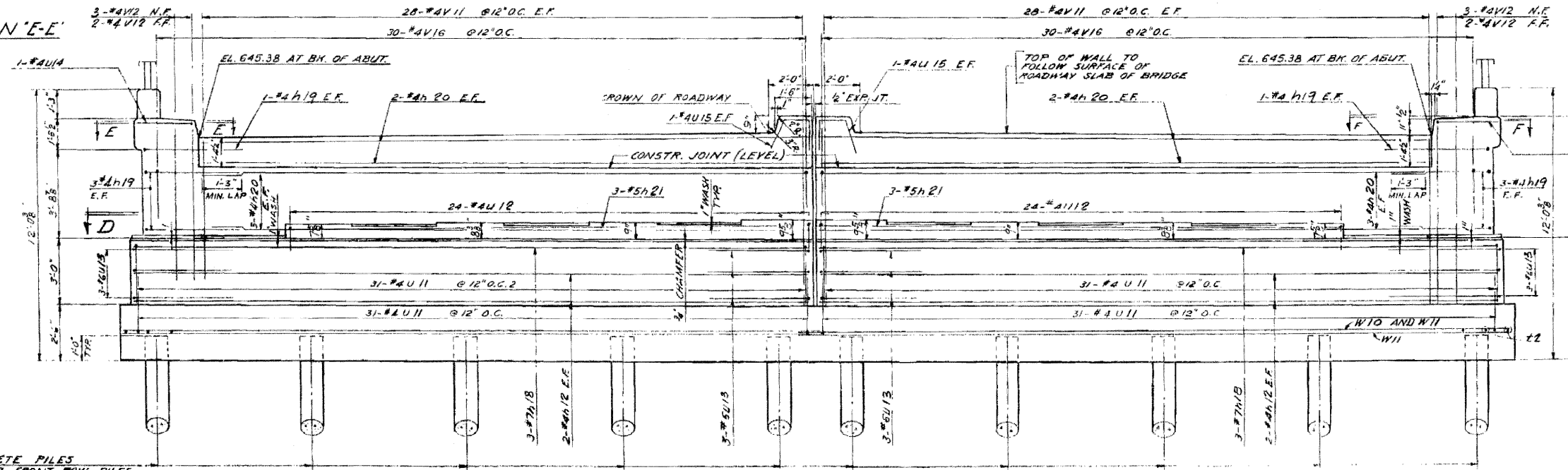


HALF SECTION "D"
SCALE: 3/8" = 1'-0"

HALF PLAN
SCALE: 3/8" = 1'-0"



SECTION "E-E"



SECTION "F-F"

FRONT ELEVATION
TWO ABUTMENTS - THUS
SCALE: 3/8" = 1'-0"

CONCRETE PILES
BATTER FRONT ROW PILES
FOR DETAILS SEE SHEET 15

FOR INFORMATION
ONLY

NORTH AND SOUTH ABUTMENTS
GRADE SEPARATION
S.A. ROUTE 9 (UTICA ROAD)
OVER I.A.I. ROUTE 80
F.A. PROJECT
FAI ROUTE 80 SECTION 50-2HB-5
LA SALLE COUNTY
STATION 895+86.16

ALFRED BINESCH & ASSOCIATES CONSULTING ENGINEERS
10 SOUTH WALASH AVENUE 706 CHICAGO, ILLINOIS

▲ SHEET ADDED 4-6-10