

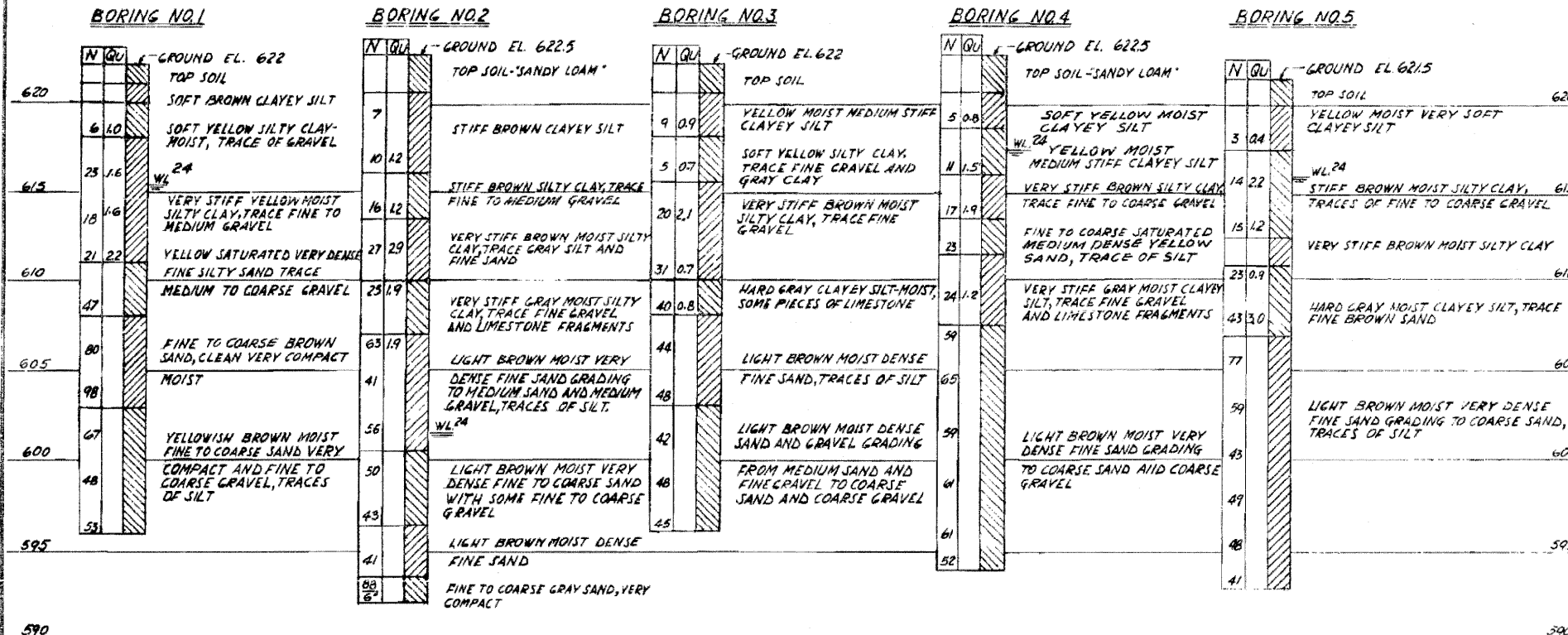
SOIL TEST BORINGS

ROUTE NO.	SECTION	COUNTY	TOTAL SHEETS	SHEET NO.
F.A. I. 80	50-2HB-5	LA SALLE	492	492B
STA.	TO STA.			
B.P. #	REG. NO. 4	ILLINOIS	PROJECT	

SHEET 2 OF 16

BILL OF MATERIAL — STATION 895+86.16

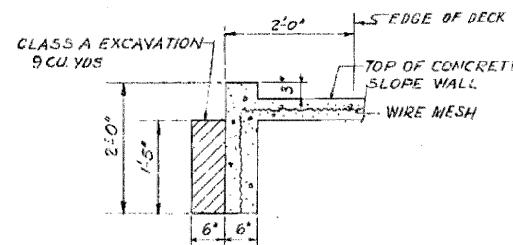
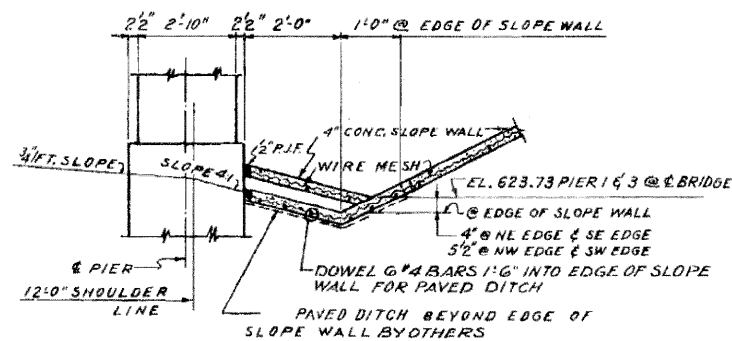
ITEM	UNIT	QUANTITY		
		SUPER	SUB	TOTAL
CLASS X CONCRETE	CU YD	353.2	464.0	817.2
REINFORCEMENT BARS	POUND	71,260	52,560	123,820
FURNISHING AND ERECTING STRUCTURAL STEEL	POUND	20,700	—	20,700
FURNISHING AND ERECTING PRECAST PRESTRESSED CONCRETE I-BEAMS, 42 IN.	LIN. FT.	1,352	—	1,352
FURNISHING AND ERECTING PRECAST PRESTRESSED CONCRETE I-BEAMS, 36 IN.	LIN. FT.	656	—	656
TEST PILE CONCRETE	EACH	—	1	1
FURNISHING CONCRETE PILES	LIN. FT.	—	1,517	1,517
DRIVING CONCRETE PILES	LIN. FT.	—	1,517	1,517
CLASS A EXCAVATION FOR STRUCTURES	CU YD	—	360	360
DRIVING TIMBER PILES	LIN. FT.	—	2,940	2,940
FURNISHING CRESOTED PILES, 20.1 TO 38 FEET	LIN. FT.	—	600	600
SLOPE WALL 4 INCH	SQ YD	—	688	688
FURNISHING AND ERECTING METAL HANDRAIL	LIN. FT.	—	440	440
NAME PLATES	EACH	—	2	2
TEST PILE TIMBER	EACH	—	1	1
METAL SHOES	EACH	—	117	117
FURNISHING CRESOTED PILES, UP TO 20 FEET	LIN. FT.	—	2,310	2,340



NOTE:

FIGURES IN COLUMN MARKED "N" INDICATE NUMBER OF BLOWS REQUIRED TO DRIVE 2" O.D. SAMPLING PIPE ONE FOOT, USING 140 LB. WEIGHT FALLING 30 INCHES, EXCEPT WHEN OTHERWISE NOTED. FIGURES IN COLUMN MARKED "QU" INDICATE UNCONFINED COMPRESSIVE STRENGTH IN TONS PER SQ. FT. BORING DATA ARE SHOWN ONLY AS A GUIDE TO THE BIDDERS IN ESTIMATING SOIL CONDITIONS WHICH MAY BE ENCOUNTERED IN THE WORK. FOR LOCATION OF BORINGS SEE GENERAL PLAN SHEET 1.

WL 24 INDICATES WATER LEVEL 24 HOURS AFTER COMPLETION OF BORING. POROSITY OF THE SOIL STRATA, VARIATION OF RAINFALL, SITE TOPOGRAPHY, ETC., MAY CAUSE CHANGES IN THESE LEVELS.



SECTION C-C
THRU EDGE OF CONCRETE SLOPE WALL

STATION 895+86.16
BUILT 196 BY
STATE OF ILLINOIS
F.A.I.R.T. 80 SEC. 50-2HB-5
F.A. PROJ. I-80-3(33)
LOADING H20-S16

SEE STATE OF ILLINOIS STD-2113
NAME PLATES EACH 2

LETTERING FOR NAME PLATES

▲ SHEET ADDED 4-6-10

GENERAL NOTES

CLASS X CONCRETE SHALL BE USED THROUGHOUT EXCEPT FOR CONCRETE IN PRECAST I-BEAMS SEE SPECIAL PROVISIONS.
COARSE AGGREGATE WHICH IS TO BE USED IN END POSTS (WINGWALLS OF ABUTMENTS) MUST BE ABSOLUTELY FREE OF CHERT, FLINT, LIMONITE, LIGNITE AND SOFT SAND STONE.
ALL CONCRETE SHALL BE CAST IN PLACE EXCEPT FOR THE PRECAST PRESTRESSED CONCRETE I-BEAMS.
THE CONCRETE FLOOR SLAB FOR EACH SPAN SHALL BE PLACED IN ONE CONTINUOUS OPERATION BETWEEN CONSTRUCTION JOINTS SHOWN AND SHALL BE FINISHED IN ACCORDANCE WITH ARTICLE 51.7 OF THE STANDARD SPECIFICATIONS.
ALL STEEL SHALL BE STRUCTURAL STEEL EXCEPT AS OTHERWISE NOTED.
BRONZE EXPANSION PLATES SHALL CONFORM TO A.S.T.M. SPECIFICATION B100, ALLOY 1, OR A.S.T.M. SPECIFICATION B22, ALLOY B, AND SHALL HAVE GRAPHITE INSERTS INSTALLED IN THE SLIDING SURFACE.
ALL STEEL BEARING PLATES, GRAPHITE BRONZE EXPANSION PLATES, LEAD PLATES AND ANCHOR BOLTS SHALL BE FABRICATED AND SET IN ACCORDANCE WITH ARTICLE 51.15 OF THE STANDARD SPECIFICATION AND ARE INCLUDED IN QUANTITY OF STRUCTURAL STEEL. ESTIMATED WEIGHT = 8,650 POUNDS.
STEEL EXPANSION DEVICES AT THE PIER AND ABUTMENTS SHALL BE FABRICATED AND SET IN ACCORDANCE WITH ARTICLE 51.18 (G) OF THE STANDARD SPECIFICATIONS AND ARE INCLUDED IN QUANTITY OF STRUCTURAL STEEL. ESTIMATED WEIGHT = 12,050 POUNDS.
STRUCTURAL STEEL SHALL BE PAINTED ONE SHOP COAT OF RED LEAD PAINT AND TWO FIELD COATS OF ALUMINUM PAINT IN ACCORDANCE WITH SECTION 56 OF THE STANDARD SPECIFICATIONS EXCEPT AS OTHERWISE SPECIFIED ON THE PLANS.

THE CONTRACTOR SHALL DRIVE ONE CONCRETE TEST PILE IN A PERMANENT LOCATION AT THE NORTH ABUTMENT AS DIRECTED BY THE ENGINEER BEFORE ORDERING THE REMAINDER OF THE CONCRETE PILES.
THE CONTRACTOR SHALL DRIVE ONE TIMBER TEST PILE NEAR PIER #2 AS DIRECTED BY THE ENGINEER BEFORE ORDERING THE REMAINDER OF THE TIMBER PILES.
SHOP INSPECTION OF STRUCTURAL STEEL AND PRECAST PRESTRESSED I-BEAMS BY ILLINOIS DIVISION OF HIGHWAYS.
JOINTS IN DECK SLAB SHALL BE FILLED WITH JOINT SEALER CONFORMING TO FEDERAL SPECIFICATION FOR SEALER; HOT POURED TYPE, FOR JOINTS IN CONCRETE, SS-5-181" CONCRETE PILES THROUGH EMBANKMENT SHALL BE DRIVEN IN PRECURED HOLES IN ACCORDANCE WITH SECTION 60.9 (C) OF THE STANDARD SPECIFICATIONS

FOR INFORMATION
ONLY

BORINGS, NAME PLATES, GENERAL NOTES,
AND QUANTITIES
GRADE SEPARATION
S.A. ROUTE 9 (UTICA ROAD)
OVER F.A.I. ROUTE 80
F.A. PROJECT
F.A.I. ROUTE 80 SECTION 50-2HB-5
LA SALLE COUNTY
STATION 895+86.16

ALFRED BENESCH & ASSOCIATES CONSULTING ENGINEERS
10 SOUTH WABASH AVENUE 766 CHICAGO, ILLINOIS