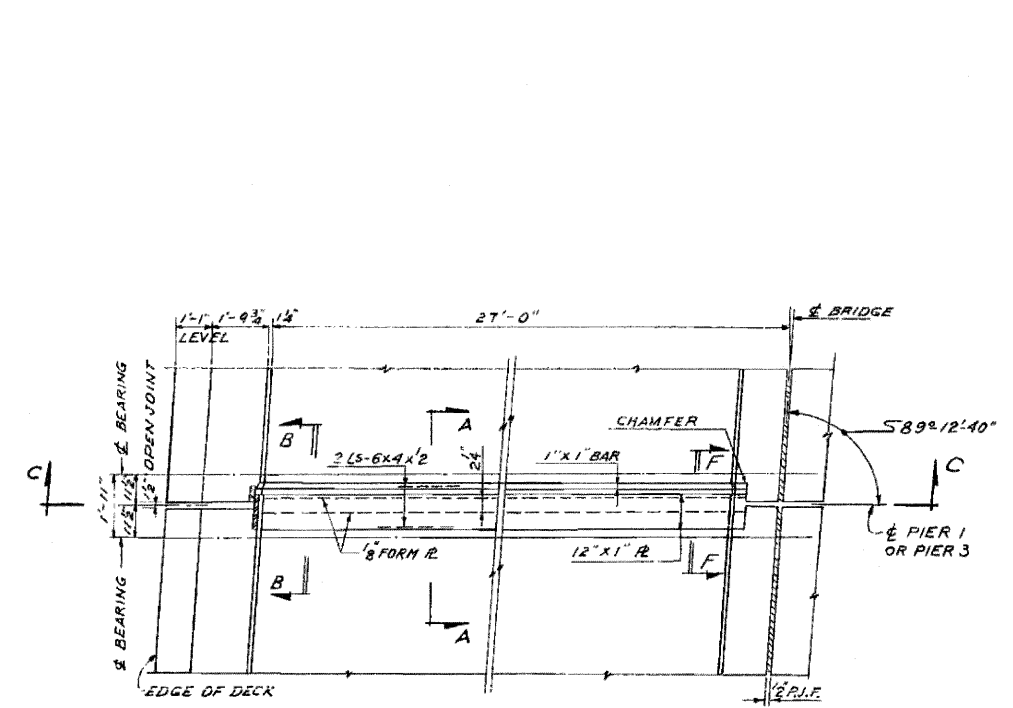
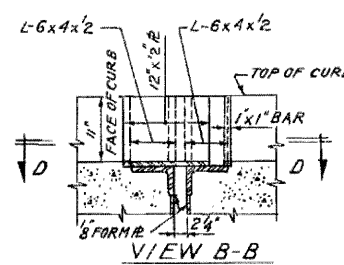


ROUTE NO.	SECTION	OWNER	TOTAL SHEETS	SHEET NO.
F.A.I. 80	50-2HB-5	LA SALLE	492	492H
STA.	50 STA.			
S.P.R. REG. NO. 4		ILLINOIS	PROJECT	

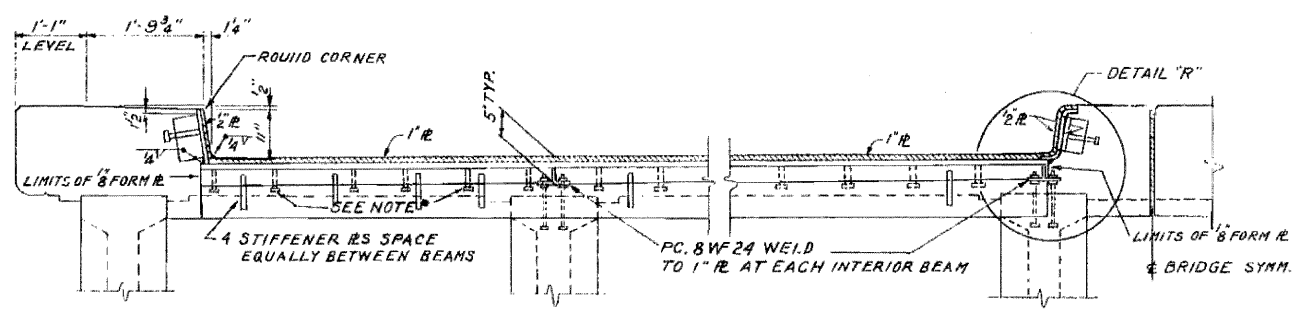
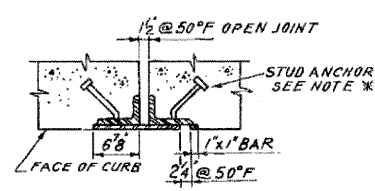
SHEET 8 OF 16



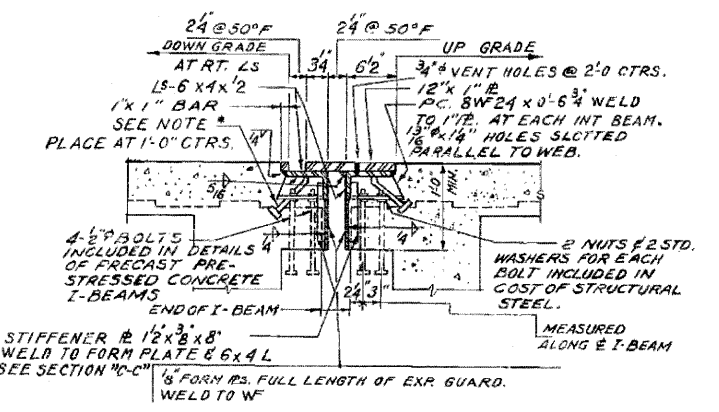
HALF PLAN OF EXPANSION JOINT DETAIL
SCALE: 3/8" = 1'-0"



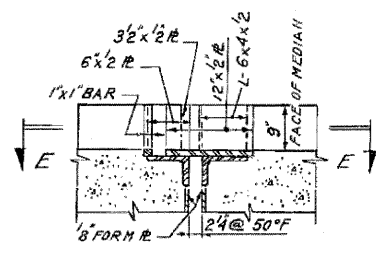
VIEW B-B
SECTION D-D
EXPANSION PLATES AT FACE OF CURB
SCALE: 1" = 1'-0"



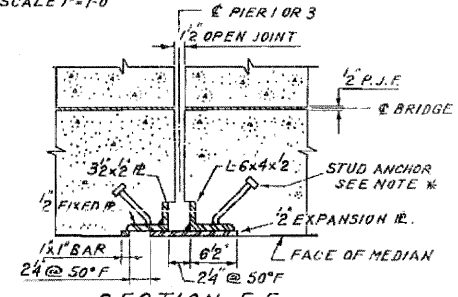
SECTION C-C
SCALE: 3/4" = 1'-0"



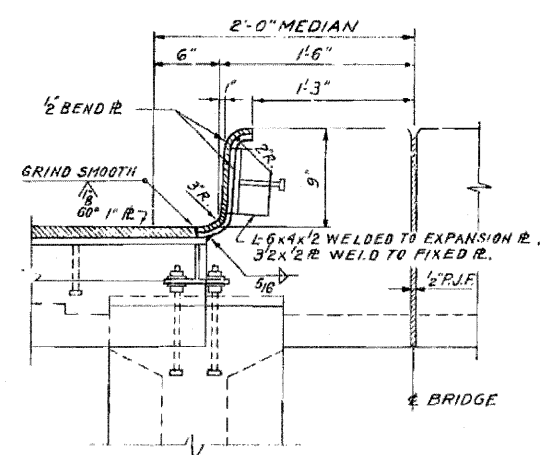
SECTION A-A
SCALE: 1" = 1'-0"



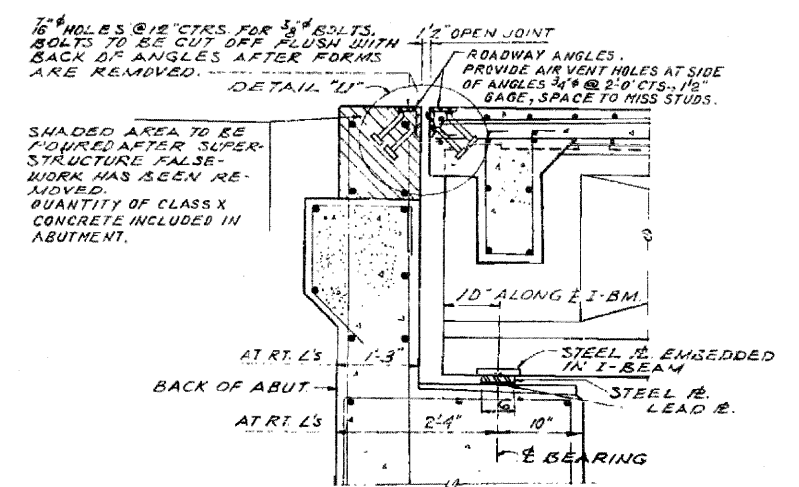
VIEW F-F
SECTION E-E
EXPANSION PLATES AT FACE OF MEDIAN
SCALE: 1" = 1'-0"



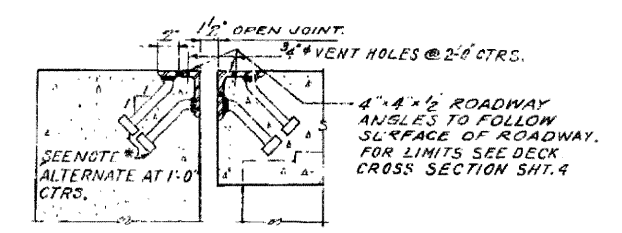
SECTION E-E
SCALE: 1" = 1'-0"



DETAIL "R"
SCALE: 1 1/2" = 1'-0"



SECTION AT ABUTMENTS



DETAIL "U"
SCALE: 1 1/2" = 1'-0"

NOTES:
* 3/4" CRIPPER STEEL GRANULAR OR SOLID FLUX FILLED HEADED STUDS AUTOMATICALLY END WELDED.
ALL MATERIAL FOR EXPANSION DEVICE SHALL BE STRUCTURAL STEEL.
DIMENSIONS NOTED AT 50°F SHALL BE INCREASED 5/8" INCH PER EACH 10° DROP IN TEMPERATURE FROM 50°F AND DECREASED 1/8" INCH FOR EACH 10° INCREASE IN TEMPERATURE FROM 50°F.
ROADWAY EXPANSION DEVICES SHALL BE FABRICATED AND ERECTED IN CONFORMANCE TO ROADWAY CR-200.
ASSEMBLY IN SHOP FOR INSPECTION.
ALL SURFACES INACCESSIBLE AFTER ERECTION SHALL RECEIVE TWO SHOP COATS OF RED LEAD PAINT EXCEPT PORTIONS EMBEDDED IN CONCRETE.

FOR INFORMATION ONLY

EXPANSION DEVICES
GRADE SEPARATION
S.A. ROUTE 9 (UTICA ROAD)
OVER F.A.I. ROUTE 80
F.A. PROJECT
F.A.I. ROUTE 80 SECTION 50-2HB-5
LA SALLE COUNTY
STATION 895 + 86.16

△ SHEET ADDED 4-6-10

ALFRED BENESCH & ASSOCIATES CONSULTING ENGINEERS
10 SOUTH WABASH AVENUE 106 CHICAGO, ILLINOIS