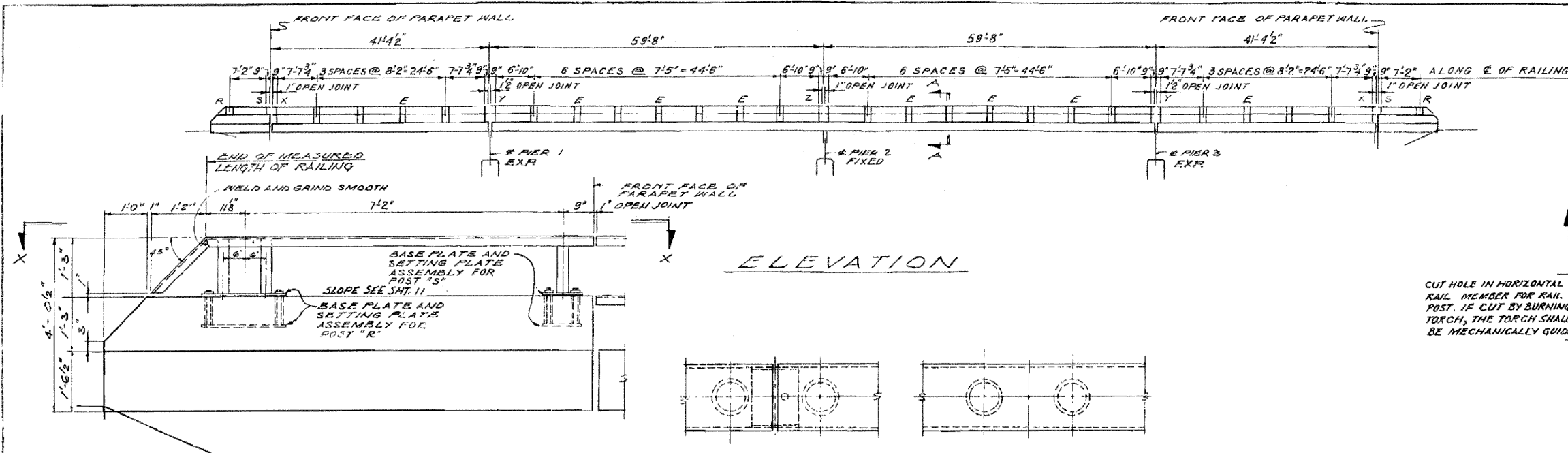


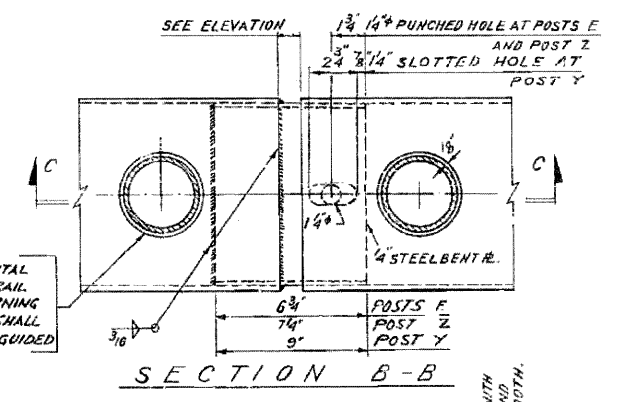
FEDERAL ROAD DISTRICT NO.	SEC.	COUNTY	TOTAL SHEETS	SHEET NO.
F.A.I. 80-50-2HB-5	LA SALLE	492	492	I
STL.	TO STA.	ALINUM	PROJECT	
B.P. REG. NO. 1				

SHEET 9 OF 16

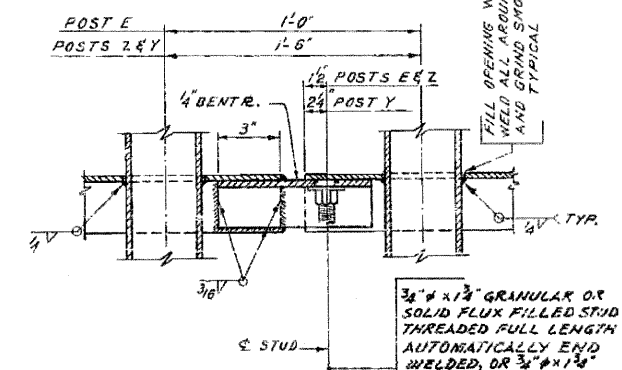


ELEVATION

TOP VIEW OF RAIL

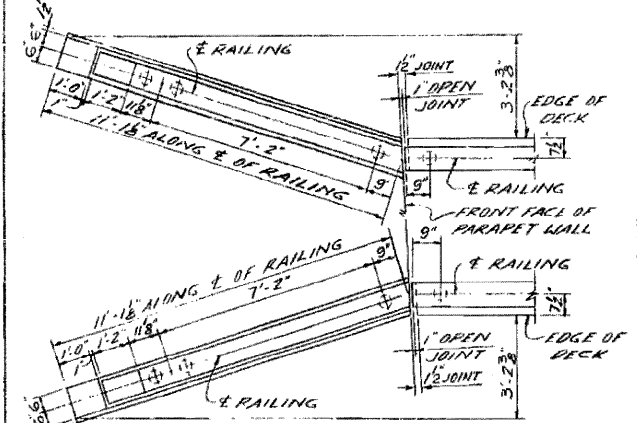


SECTION B-B

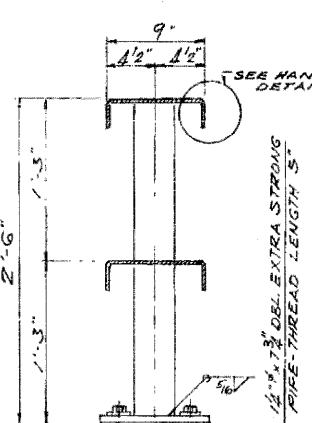


SECTION C-C

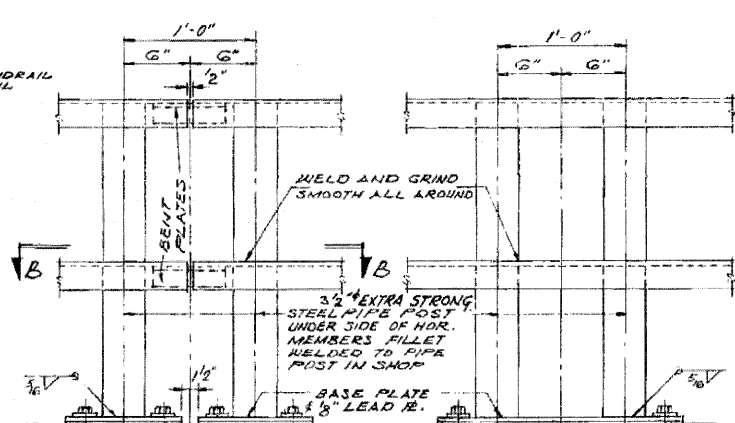
WINGWALL HANDRAIL ELEVATION



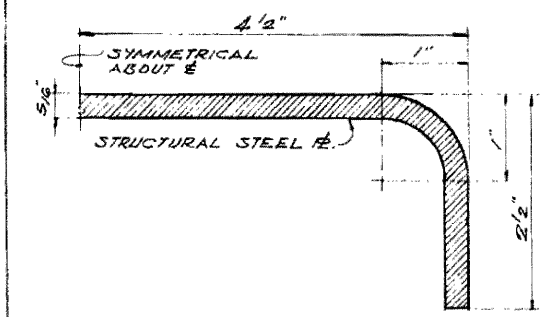
SECTION X-X



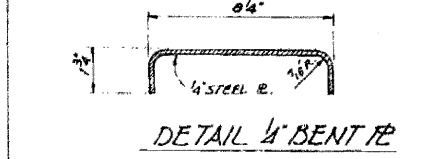
SECTION A-A



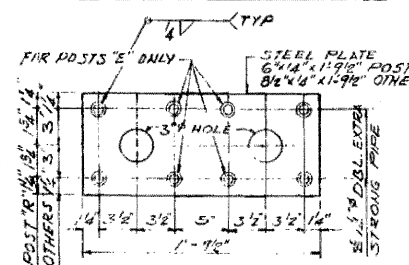
POSTS "E" INTERMEDIATE POSTS END POST "X" END POST "Y" END POST "Z" SIMILAR



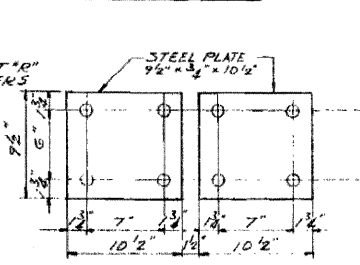
HANDRAIL DETAIL



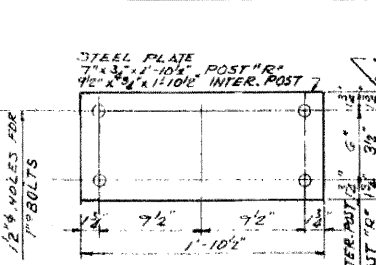
DETAIL 1/2 BENT R



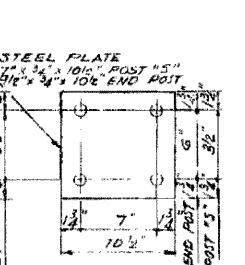
SETTING PLATE - POSTS "E", "R" & INTERMEDIATE POSTS



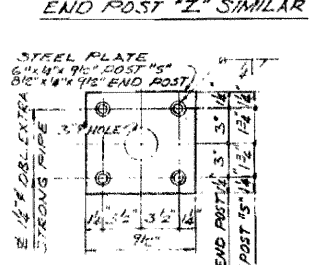
BASE PLATE POSTS "E"



BASE PLATE INTERMEDIATE POST AND POST "R"



BASE PLATE END POSTS AND POST "Y"



SETTING PLATE END POSTS AND POST "Y"

NOTES

RAIL SHALL BE FABRICATED AND ERRECTED TO CONFORM TO PROFILE OF ROADWAY.

RAIL POSTS SHALL BE TRULY VERTICAL.

WELDING OF RAIL POST TO HORIZONTAL MEMBERS AND BASE PLATES SHALL BE CONTINUOUS WELDS ALL AROUND.

RAIL POSTS SHALL CONFORM TO THE STANDARD SPECIFICATIONS FOR WELDED AND SEAMLESS STEEL PIPE ASS'N. WITH MINIMUM YIELD POINT OF 30,000 P.S.I.

HANDRAIL SHALL BE GIVEN ONE SHOP COAT OF RED LEAD AND 2 FIELD COATS OF ALUMINUM PAINT. SEE SPECIFICATIONS.

SHIM PLATES FOR RAIL POSTS: FURNISH SHIMS CONSISTING OF ONE 1/8" SHIM AND TWO 1/16" SHIMS AT 50% OF RAIL POSTS ON SUPERSTRUCTURE AND ALL POSTS ON WINGWALLS FOR VERTICAL ADJUSTMENT OF POSTS.

SIZE OF SHIM PLATES, LEAD PLATES AND SPACING OF HOLES SHALL BE SAME AS FOR BASE PLATES OF POSTS.

AFTER ERECTION ALL BOLTS AND WASHERS SHALL BE SPOT PAINTED WITH ONE COAT OF RED LEAD AND TWO COATS OF ALUMINUM PAINT.

FOR INFORMATION ONLY

HANDRAIL DETAILS
 GRADE SEPARATION
 SA. ROUTE 9 (UTICA ROAD)
 OVER ILL. ROUTE 80
 LA. PROJECT
 F.A.I. ROUTE 80 SECTION 50-2HB-5
 LA SALLE COUNTY
 STATION 895+86.16

△ SHEET ADDED

ALFRED BENECH & ASSOCIATES CONSULTING ENGINEERS
 10 SOUTH WABASH AVENUE 706 CHICAGO, ILLINOIS