

F.A.I. RTE.	SECTION	COUNTY	TOTAL SHEETS	SHEET NO.
80	(50-3)HBK	LASALLE	492	55
STA.		TO STA.		
FED. ROAD DIST. NO.		ILLINOIS FED. AID PROJECT		

PROP. CURVE F-1
PI STA. = 607+58.82
Δ = 60° 41' 37" (LT)
D = 28° 38' 52"
R = 200.00'
T = 117.09'
L = 211.86'
E = 31.75'
S.E. = 6.0%
S.E. TRANSITION = 118'
P.C. STA. = 606+41.73
P.T. STA. = 608+53.59

PROP. CURVE F-2
PI STA. = 611+30.73
Δ = 19° 03' 21" (RT)
D = 11° 27' 33"
R = 500.00'
T = 83.92'
L = 166.29'
E = 6.99'
S.E. = 4.5%
S.E. TRANSITION = 95'
P.C. STA. = 610+46.81
P.T. STA. = 612+13.10

PROP. CURVE F-3
PI STA. = 619+23.88
Δ = 25° 27' 49" (RT)
D = 18° 47' 08"
R = 305.00'
T = 68.91'
L = 135.55'
E = 7.69'
S.E. = 5.5%
S.E. TRANSITION = 111'
P.C. STA. = 618+54.97
P.T. STA. = 619+90.52

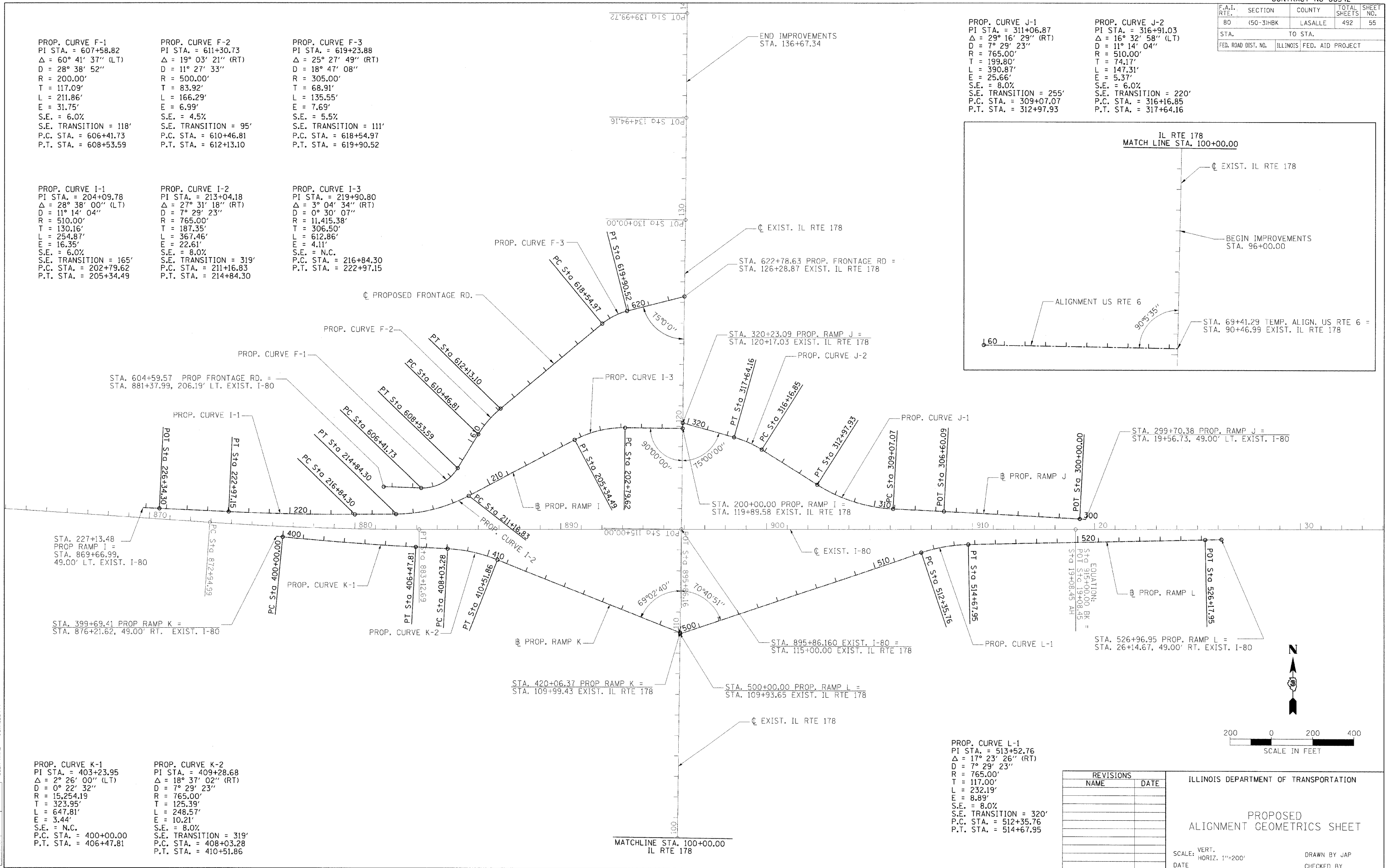
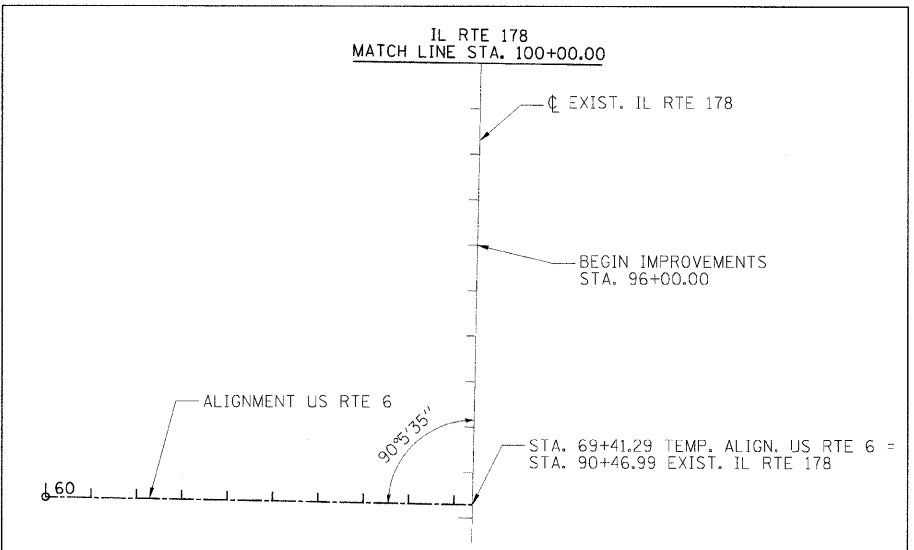
PROP. CURVE I-1
PI STA. = 204+09.78
Δ = 28° 38' 00" (LT)
D = 11° 14' 04"
R = 510.00'
T = 130.16'
L = 254.87'
E = 16.35'
S.E. = 6.0%
S.E. TRANSITION = 165'
P.C. STA. = 202+79.62
P.T. STA. = 205+34.49

PROP. CURVE I-2
PI STA. = 213+04.18
Δ = 27° 31' 18" (RT)
D = 7° 29' 23"
R = 765.00'
T = 187.35'
L = 367.46'
E = 22.61'
S.E. = 8.0%
S.E. TRANSITION = 319'
P.C. STA. = 211+16.83
P.T. STA. = 214+84.30

PROP. CURVE I-3
PI STA. = 219+90.80
Δ = 3° 04' 34" (RT)
D = 0° 30' 07"
R = 11,415.38'
T = 306.50'
L = 612.86'
E = 4.11'
S.E. = N.C.
P.C. STA. = 216+84.30
P.T. STA. = 222+97.15

PROP. CURVE J-1
PI STA. = 311+06.87
Δ = 29° 16' 29" (RT)
D = 7° 29' 23"
R = 765.00'
T = 199.80'
L = 390.87'
E = 25.66'
S.E. = 8.0%
S.E. TRANSITION = 255'
P.C. STA. = 309+07.07
P.T. STA. = 312+97.93

PROP. CURVE J-2
PI STA. = 316+91.03
Δ = 16° 32' 58" (LT)
D = 11° 14' 04"
R = 510.00'
T = 74.17'
L = 147.31'
E = 5.37'
S.E. = 6.0%
S.E. TRANSITION = 220'
P.C. STA. = 316+16.85
P.T. STA. = 317+64.16



PROP. CURVE K-1
PI STA. = 403+23.95
Δ = 2° 26' 00" (LT)
D = 0° 22' 32"
R = 15,254.19'
T = 323.95'
L = 647.81'
E = 3.44'
S.E. = N.C.
P.C. STA. = 400+00.00
P.T. STA. = 406+47.81

PROP. CURVE K-2
PI STA. = 409+28.68
Δ = 18° 37' 02" (RT)
D = 7° 29' 23"
R = 765.00'
T = 125.39'
L = 248.57'
E = 10.21'
S.E. = 8.0%
S.E. TRANSITION = 319'
P.C. STA. = 408+03.28
P.T. STA. = 410+51.86

PROP. CURVE L-1
PI STA. = 513+52.76
Δ = 17° 23' 26" (RT)
D = 7° 29' 23"
R = 765.00'
T = 117.00'
L = 232.19'
E = 8.89'
S.E. = 8.0%
S.E. TRANSITION = 320'
P.C. STA. = 512+35.76
P.T. STA. = 514+67.95

REVISIONS	
NAME	DATE

ILLINOIS DEPARTMENT OF TRANSPORTATION

PROPOSED
ALIGNMENT GEOMETRICS SHEET

SCALE: VERT. 1"=200'
HORIZ. 1"=200'

DRAWN BY JAP
CHECKED BY

MODEL NAME = Dimensions Pr.
 FILE NAME = CAPRI Export-AE-2003RFP.dgn
 PLOT SCALE = 200.0000 / in.
 USER NAME = JohnB@IDOT

LAYOUT JAP 07/22/05
 DRAWN JAP 07/22/05
 REVIEWED BJK 10/17/07

© Copyright Hanson Professional Services Inc. 2009
HANSON
 Hanson Professional Services Inc.
 1525 South Sixth Street
 Springfield, Illinois 62703-2886
 Offices Nationwide