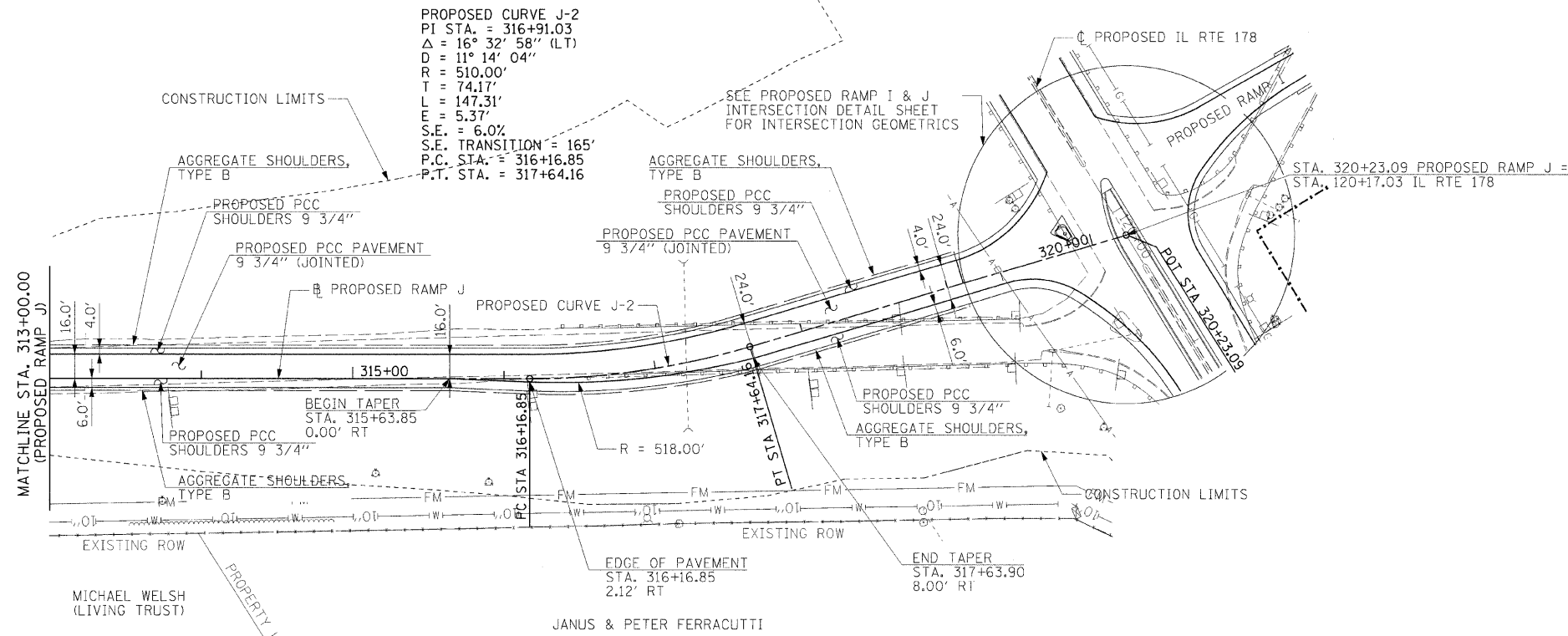
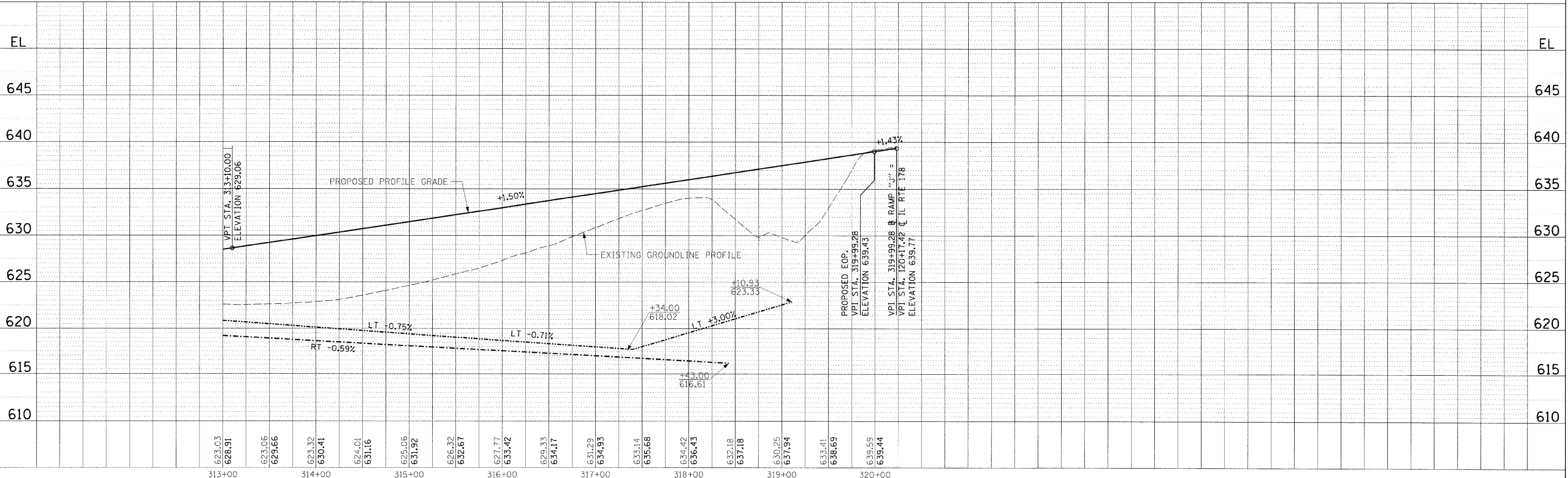
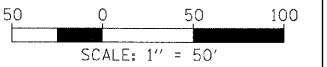


F.A.I. RTE.	SECTION	COUNTY	TOTAL SHEETS	SHEET NO.
80	(50-3)HBK	LASALLE	492	68
STA. 313+00.00		TO STA. 320+23.09		
FED. ROAD DIST. NO.		ILLINOIS FED. AID PROJECT		



NOTE: SEE DRAINAGE & UTILITIES SHEETS FOR ADDITIONAL DRAINAGE INFORMATION



PROPOSED RAMP J

DATE	BY

PLAN  
 REVISIONS  
 CHECKED  
 PLOTTED  
 NO. 1  
 NO. 2  
 NO. 3  
 NO. 4  
 NO. 5  
 NO. 6  
 NO. 7  
 NO. 8  
 NO. 9  
 NO. 10  
 HANSON PROFESSIONAL SERVICES INC.  
 2700 Springfield, Illinois 62703-2886  
 Offices Nationwide

DATE	BY

PROFILE  
 REVISIONS  
 CHECKED  
 PLOTTED  
 NO. 1  
 NO. 2  
 NO. 3  
 NO. 4  
 NO. 5  
 NO. 6  
 NO. 7  
 NO. 8  
 NO. 9  
 NO. 10  
 HANSON PROFESSIONAL SERVICES INC.  
 2700 Springfield, Illinois 62703-2886  
 Offices Nationwide

LAYOUT	DATE	BY
MEW	01/06/06	
MEW	01/06/06	
REVIEWED	08/31/06	

MODEL NAME = Ramp\_J\_Sht\_2  
 PLOT DATE = 12/23/2009  
 FILE NAME = C:\PM\_Export\1C-784\_R.dgn  
 PLOT SCALE = 50.0000 / 1" = 50'  
 USER NAME = JohnM20044