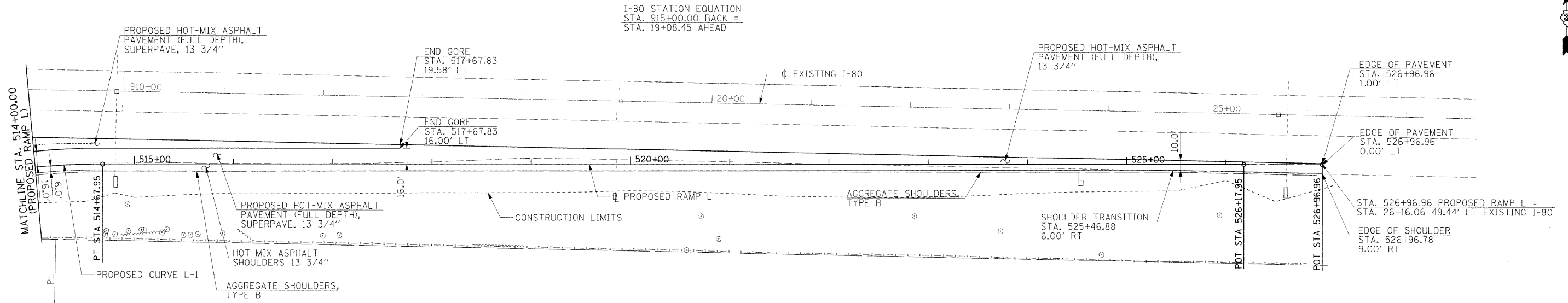


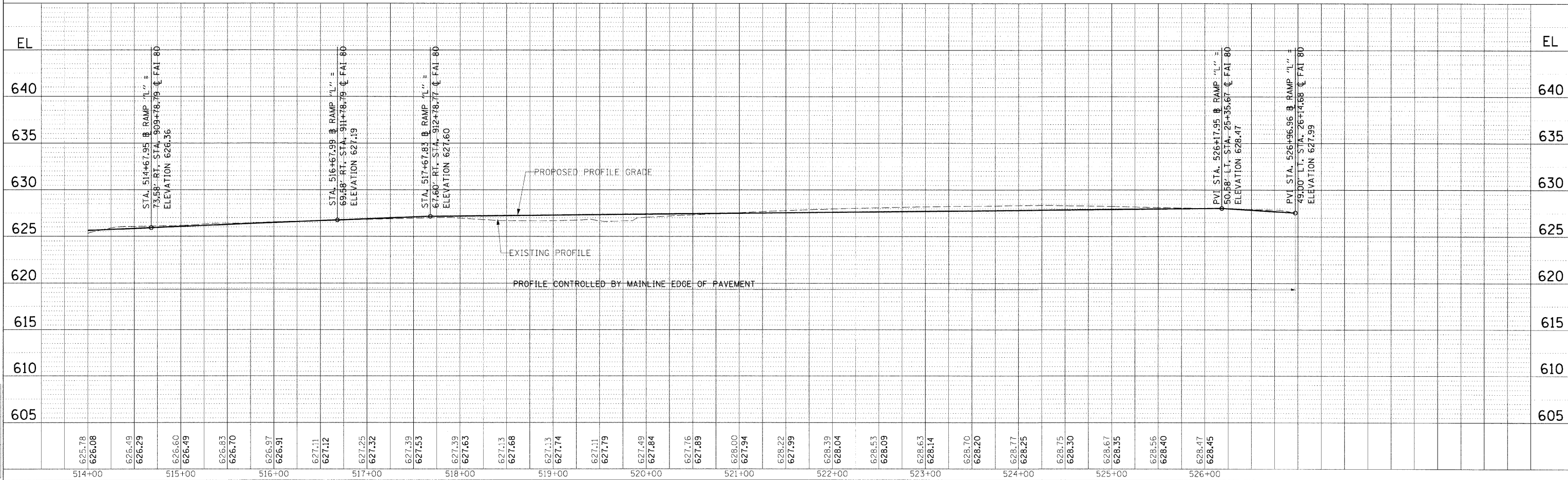
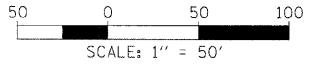
F.A.I. RTE.	SECTION	COUNTY	TOTAL SHEETS	SHEET NO.
80	(50-3)HBK	LASALLE	492	72
STA. 514+00.00		TO STA. 526+96.96		
FED. ROAD DIST. NO.		ILLINOIS	FED. AID PROJECT	



PROPOSED CURVE L-1
 P.I. STA. = 513+52.76
 $\Delta = 17^\circ 23' 26''$ (RT)
 $D = 7^\circ 29' 23''$
 $R = 765.00'$
 $T = 117.00'$
 $L = 232.19'$
 $E = 8.89'$
 $S.E. = 8.0\%$
 $S.E. TRANSITION (IN) = 319'$
 $S.E. TRANSITION (OUT) = 255'$
 $P.C. STA. = 512+35.76$
 $P.T. STA. = 514+67.95$

BONNIE BENNETT & DEE GRUSK

NOTE: SEE DRAINAGE & UTILITIES SHEETS FOR ADDITIONAL DRAINAGE INFORMATION



PLAN	DATE

HANSON Professional Services Inc.
 2700 North Lincoln Road
 Springfield, Illinois 62703-2886
 Offices Nationwide

PROFILE	DATE

LAYOUT	DATE

MODEL NAME = Ramp L_Sht 2
 PLOT DATE = 12/23/2009
 FILE NAME = C:\P\Export\1C-706_R.dgn
 PLOT SCALE = 50.0000 / 1 in.
 USER NAME = Johna0944