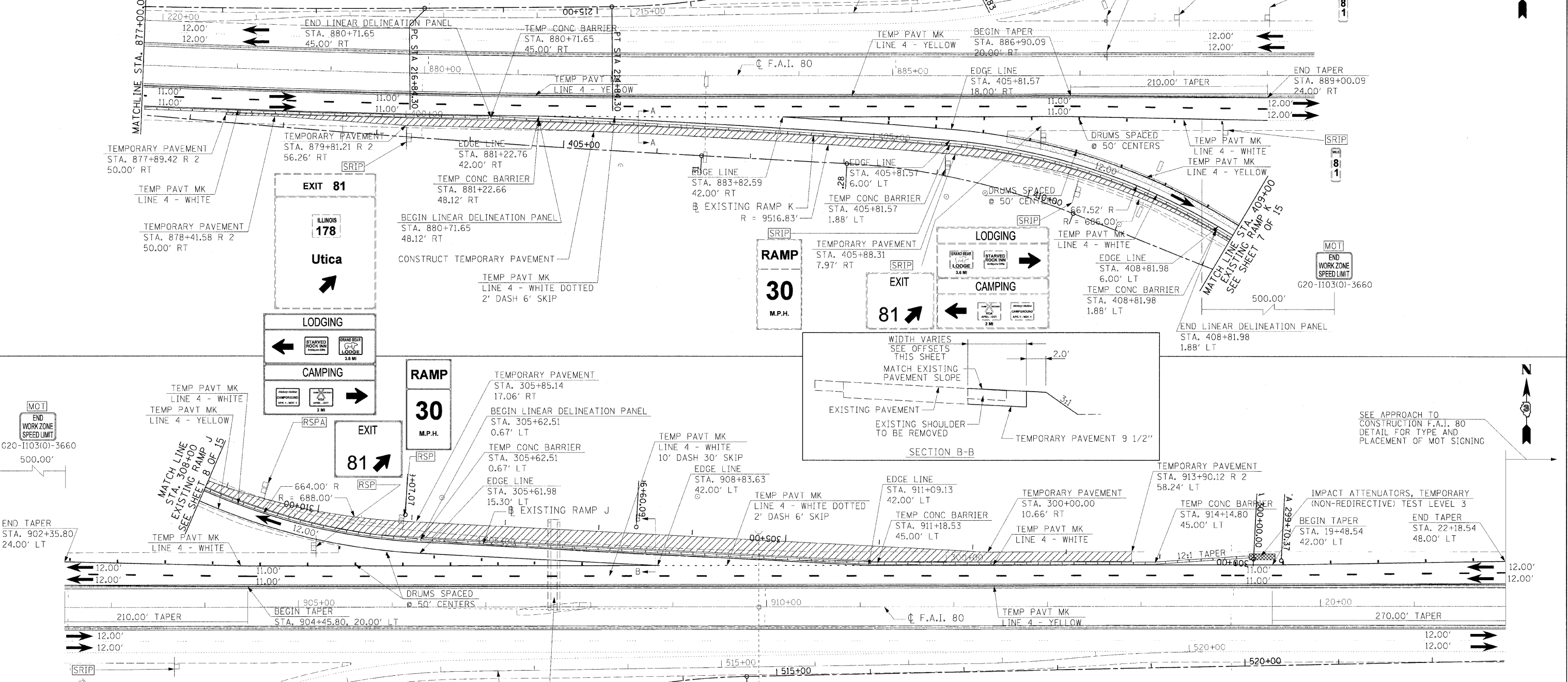
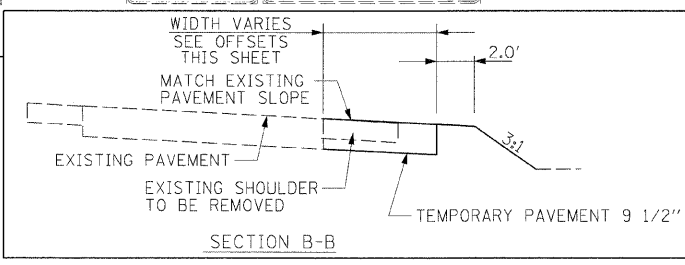
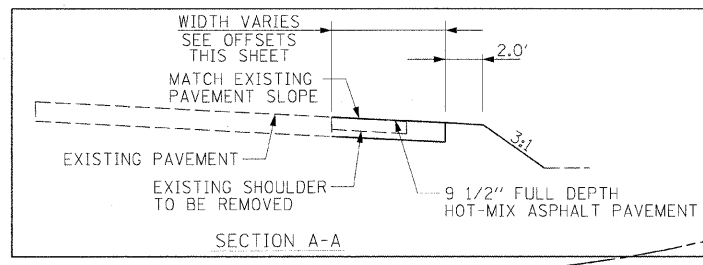


F.A.I. RTE.	SECTION	COUNTY	TOTAL SHEETS	SHEET NO.
80	(50-3)H&K	LASALLE	492	128
STA.		TO STA.		
FED. ROAD DIST. NO.		ILLINOIS FED. AID PROJECT		

SIGNING LEGEND

- [RSPA] REMOVE SIGN PANEL ASSEMBLY (AT END OF STAGE)
- [RSP] REMOVE SIGN PANEL (AT END OF STAGE)
- [RLSPA] RELOCATE SIGN PANEL
- [RLSPA] RELOCATE SIGN PANEL ASSEMBLY
- [SRIP] SIGN TO REMAIN IN PLACE
- [TAS] TEMPORARY ACCESS SIGNS
- [MOT] SIGNS TO BE PAID FOR THROUGH TRAFFIC CONTROL STANDARDS



SEE APPROACH TO CONSTRUCTION F.A.I. 80 DETAIL FOR TYPE AND PLACEMENT OF MOT SIGNING

LEGEND

- [Hatched Box] PREVIOUSLY CONSTRUCTED PERMANENT SHOULDER
- [Cross-hatched Box] CONSTRUCTION AREA
- [Dotted Box] TEMPORARY PAVEMENT
- [Barricade Symbol] DRUMS OR TYPE II BARRICADES
- [Arrow Symbol] TRAFFIC FLOW
- [Barrier Symbol] TEMPORARY CONCRETE BARRIER
- [Barricade Symbol] TYPE III BARRICADES
- [Sign Symbol] SIGN

REVISIONS	
NAME	DATE

ILLINOIS DEPARTMENT OF TRANSPORTATION

**MAINTENANCE OF TRAFFIC
PRESTAGE 1 PHASE II
SHEET 6 OF 15**

SCALE: VERT. N/A
HORIZ. 1"=50'

DRAWN BY MEW
CHECKED BY

HANSON
Hanson Professional Services Inc.
1525 South Sixth Street
Springfield, Illinois 62703-2886
Offices Nationwide

MODEL NAME: FRS 1 Phase II Sht. 6
PLOT DATE: 12/23/2009
PLOT SCALE: 50.0000
USER NAME: Janna08944

LAYOUT	DATE	BY	REVIEWED
NEW	5/27/05	MTM	
DRAWN	5/27/05		
REVIEWED	10/17/07		

