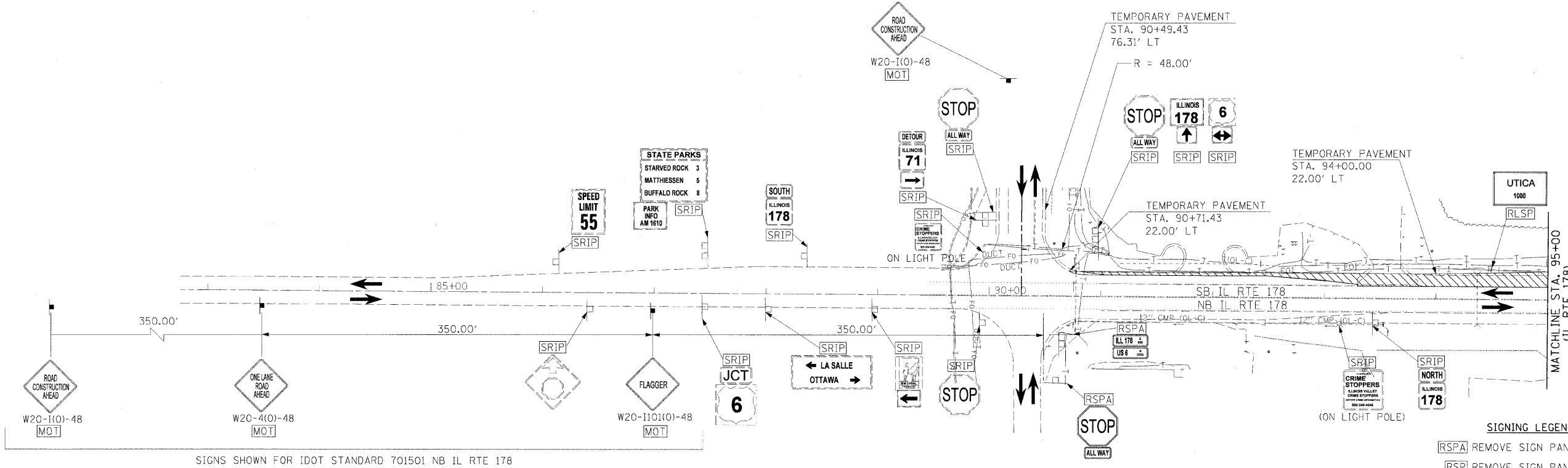


F.A.I. RTE.	SECTION	COUNTY	TOTAL SHEETS	SHEET NO.
80	150-31HBK	LASALLE	492	131
STA.		TO STA.		
FED. ROAD DIST. NO.		ILLINOIS FED. AID PROJECT		

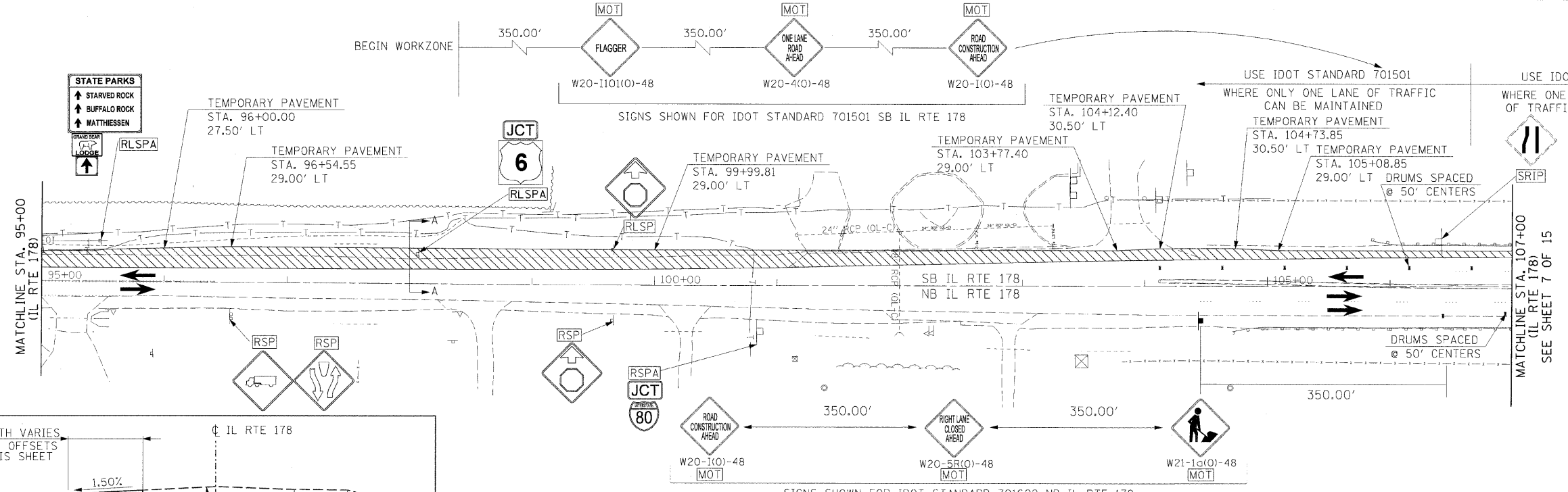


SIGNS SHOWN FOR IDOT STANDARD 701501 NB IL RTE 178

- SIGNING LEGEND**
- [RSPA] REMOVE SIGN PANEL ASSEMBLY (AT END OF STAGE)
 - [RSP] REMOVE SIGN PANEL (AT END OF STAGE)
 - [RLSP] RELOCATE SIGN PANEL
 - [RLSPA] RELOCATE SIGN PANEL ASSEMBLY
 - [SRIP] SIGN TO REMAIN IN PLACE
 - [TAS] TEMPORARY ACCESS SIGNS
 - [MOT] SIGNS TO BE PAID FOR THROUGH TRAFFIC CONTROL STANDARDS

HANSON
 Hanson Professional Services Inc.
 1525 South Sixth Street
 Springfield, Illinois 62703-2888
 Offices Nationwide

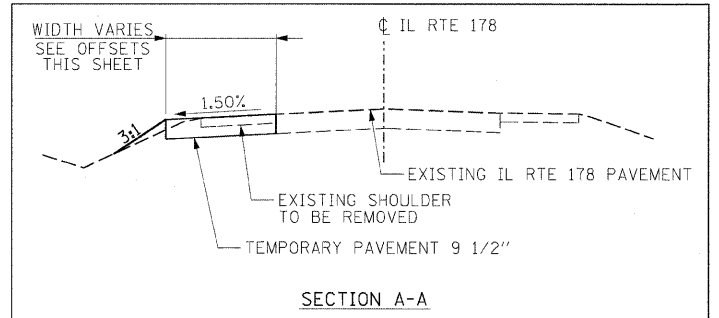
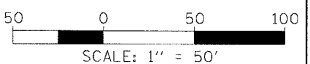
© Copyright Hanson Professional Services Inc. 2009



SIGNS SHOWN FOR IDOT STANDARD 701501 SB IL RTE 178

USE IDOT STANDARD 701501 WHERE ONLY ONE LANE OF TRAFFIC CAN BE MAINTAINED
 USE IDOT STANDARD 701602 WHERE ONE SB AND ONE NB LANE OF TRAFFIC CAN BE MAINTAINED

- LEGEND**
- [Hatched Area] CONSTRUCTION AREA
 - [Dashed Area] TEMPORARY PAVEMENT
 - [Symbol] DRUMS OR TYPE II BARRICADES
 - [Arrow] TRAFFIC FLOW
 - [Symbol] TEMPORARY CONCRETE BARRIER
 - [Symbol] TYPE III BARRICADES
 - [Symbol] SIGN



SECTION A-A

NOTE:
 STA. 107+00 TO STA 124+00 PURPOSELY NOT SHOWN HERE. USE IDOT STANDARD 701602 FOR CHANNELIZATION AND SIGNING DEVICES.

REVISIONS	
NAME	DATE

ILLINOIS DEPARTMENT OF TRANSPORTATION

**MAINTENANCE OF TRAFFIC
 PRESTAGE 1 PHASE II
 SHEET 9 OF 15**

SCALE: VERT. N/A
 HORIZ. 1"=50'

DATE: _____ DRAWN BY: _____
 CHECKED BY: _____

MODEL NAME = PS I Phase II Sht. 9	5/27/05
FILE DATE = 12/23/2009	5/27/05
FILE NAME = 150-31HBK-ASC-1007-C-PS.dwg	5/27/05
PLOT SCALE = 50.0000 1/16"	10/1/07
USER NAME = Johnm60944	
LAYOUT	
DRAWN	
REVIEWED	