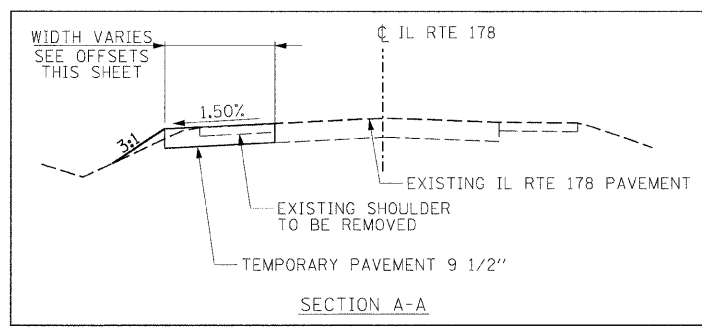
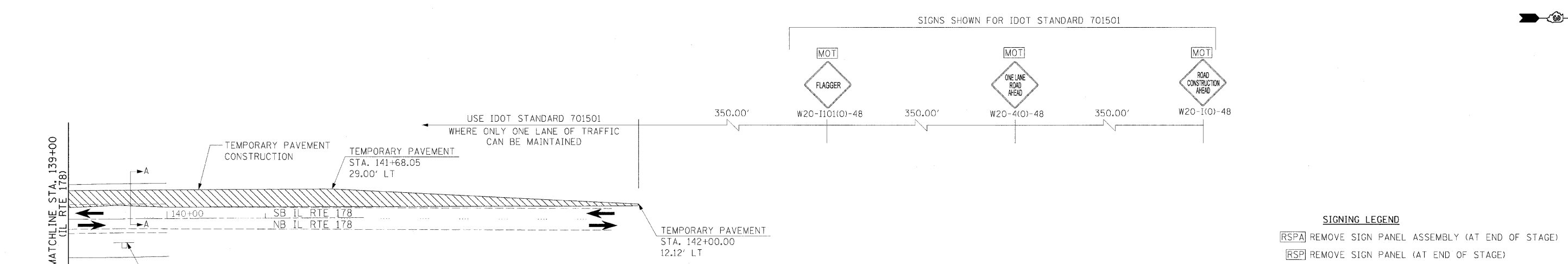
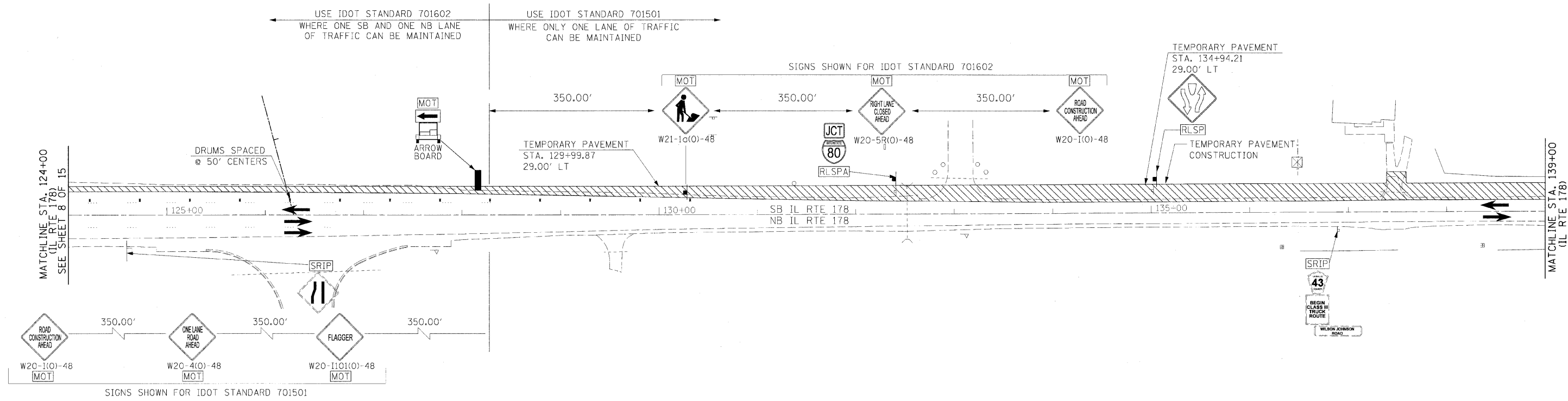
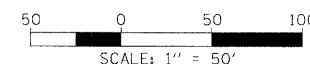


| F.A.I. RTE.         | SECTION   | COUNTY                    | TOTAL SHEETS | SHEET NO. |
|---------------------|-----------|---------------------------|--------------|-----------|
| 80                  | 150-3/HBK | LASALLE                   | 492          | 132       |
| STA.                |           | TO STA.                   |              |           |
| FED. ROAD DIST. NO. |           | ILLINOIS FED. AID PROJECT |              |           |



- SIGNING LEGEND**
- [RLSPA] REMOVE SIGN PANEL ASSEMBLY (AT END OF STAGE)
  - [RSP] REMOVE SIGN PANEL (AT END OF STAGE)
  - [RLSP] RELOCATE SIGN PANEL
  - [RLSPA] RELOCATE SIGN PANEL ASSEMBLY
  - [SRIP] SIGN TO REMAIN IN PLACE
  - [TAS] TEMPORARY ACCESS SIGNS
  - [MOT] SIGNS TO BE PAID FOR THROUGH TRAFFIC CONTROL STANDARDS

- LEGEND**
- [Hatched Box] CONSTRUCTION AREA
  - [Dotted Box] TEMPORARY PAVEMENT
  - [Arrow] DRUMS OR TYPE II BARRICADES
  - [Thick Arrow] TRAFFIC FLOW
  - [Line with Dashes] TEMPORARY CONCRETE BARRIER
  - [T-Bar] TYPE III BARRICADES
  - [Square] SIGN



| REVISIONS |      |
|-----------|------|
| NAME      | DATE |
|           |      |
|           |      |
|           |      |
|           |      |
|           |      |
|           |      |

ILLINOIS DEPARTMENT OF TRANSPORTATION

**MAINTENANCE OF TRAFFIC  
PRESTAGE 1 PHASE II  
SHEET 10 OF 15**

SCALE: VERT. N/A  
HORIZ. 1"=50'

DATE: \_\_\_\_\_ DRAWN BY MEW  
CHECKED BY \_\_\_\_\_

**HANSON**  
Hanson Professional Services Inc.  
1525 South Sixth Street  
Springfield, Illinois 62703-2886  
Offices Nationwide

MODEL NAME = PS 1 Phase II Sht 10  
PLOT DATE = 12/23/2009  
DRAWN BY = J.C. 10/27/07  
PLOT SCALE = 1/8"=1'-0"  
USER NAME = Johna00944

| LAYOUT | DATE    |
|--------|---------|
| MEW    | 5/27/05 |
| MEW    | 5/27/05 |
| MTM    | 10/1/07 |