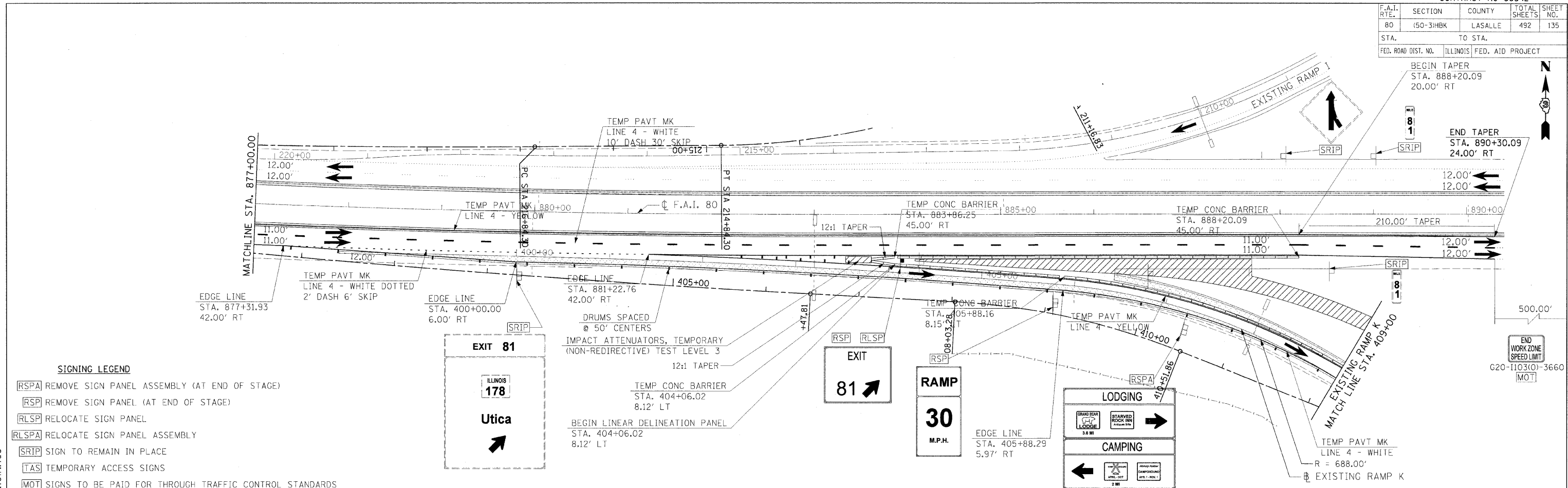


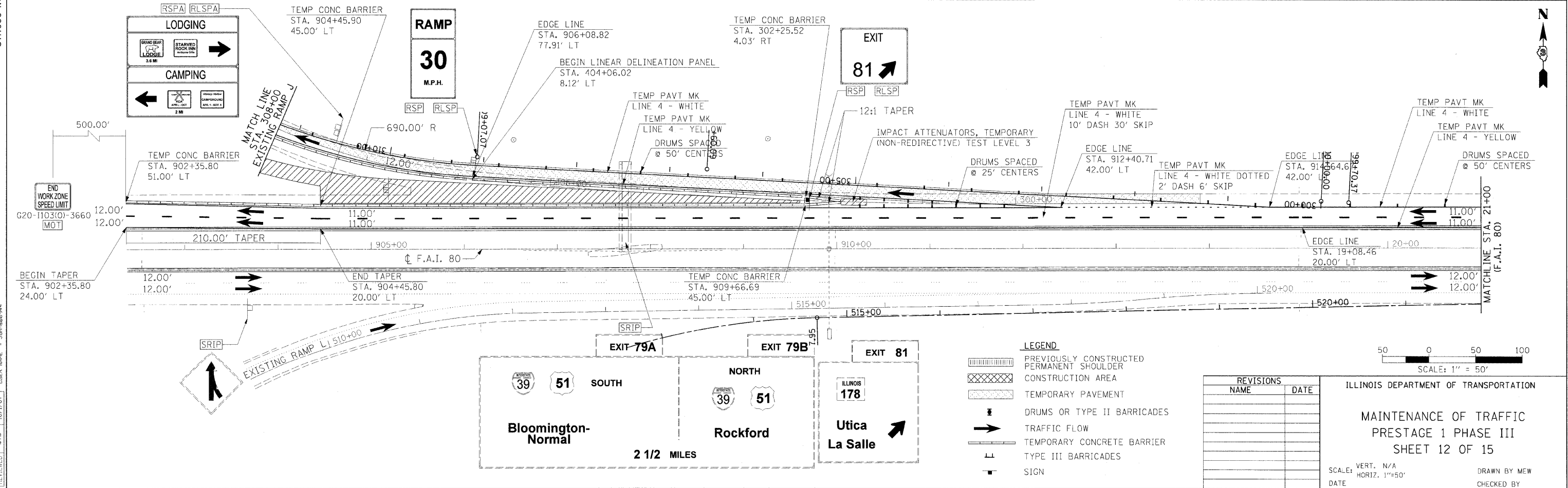
F.A.I. RTE.	SECTION	COUNTY	TOTAL SHEETS	SHEET NO.
80	150-31HBK	LASALLE	492	135
STA.		TO STA.		
FED. ROAD DIST. NO.		ILLINOIS FED. AID PROJECT		



SIGNING LEGEND

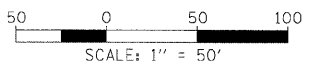
- RSPA** REMOVE SIGN PANEL ASSEMBLY (AT END OF STAGE)
- RSP** REMOVE SIGN PANEL (AT END OF STAGE)
- RLSPA** RELOCATE SIGN PANEL ASSEMBLY
- RLSP** RELOCATE SIGN PANEL
- SRIP** SIGN TO REMAIN IN PLACE
- TAS** TEMPORARY ACCESS SIGNS
- MOT** SIGNS TO BE PAID FOR THROUGH TRAFFIC CONTROL STANDARDS

HANSON
 Hanson Professional Services Inc.
 1525 South Sixth Street
 Springfield, Illinois 62703-2886
 Offices Nationwide



LEGEND

- PREVIOUSLY CONSTRUCTED PERMANENT SHOULDER
- CONSTRUCTION AREA
- TEMPORARY PAVEMENT
- DRUMS OR TYPE II BARRICADES
- TRAFFIC FLOW
- TEMPORARY CONCRETE BARRIER
- TYPE III BARRICADES
- SIGN



REVISIONS	
NAME	DATE

ILLINOIS DEPARTMENT OF TRANSPORTATION

**MAINTENANCE OF TRAFFIC
 PRESTAGE 1 PHASE III
 SHEET 12 OF 15**

SCALE: VERT. N/A
 HORIZ. 1"=50'

DRAWN BY MEW
 CHECKED BY

MODEL NAME = PS I Phase III Sh. 12
 PLOT DATE = 10/23/2009
 PLOT SCALE = 1/8"=1'-0"
 USER NAME = JohnB09044

LAYOUT	5/27/05
DRAWN	5/27/05
REVIEWED	10/1/07