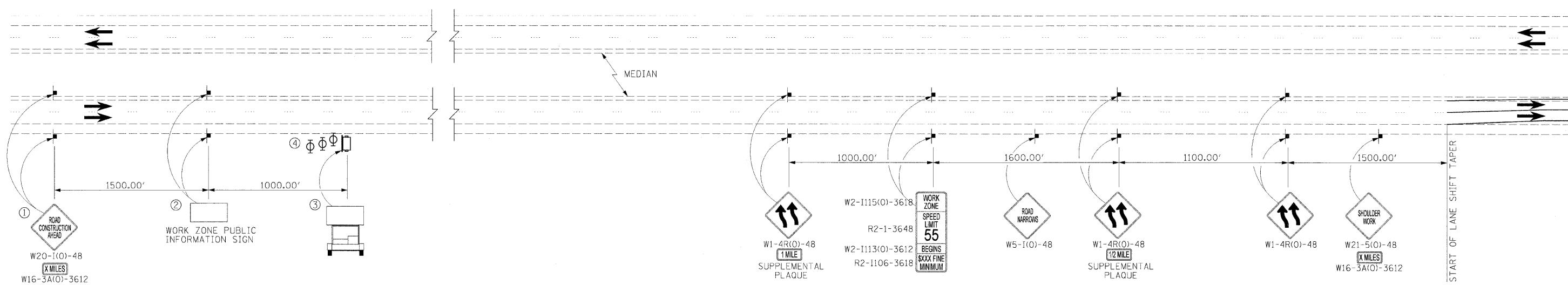


F.A.I. RTE.	SECTION	COUNTY	TOTAL SHEETS	SHEET NO.
80	150-318BK	LASALLE	492	189
STA.		TO STA.		
FED. ROAD DIST. NO.	ILLINOIS	FED. AID PROJECT		



- SYMBOLS
- PORTABLE CHANGEABLE MESSAGE SIGN
 - SIGN
 - TYPE II BARRICADE, DRUM, OR VERTICAL BARRICADE WITH MONODIRECTIONAL FLASHING LIGHT

- ① THE ROAD CONSTRUCTION AHEAD SIGN SHALL BE LOCATED 3 TO 5 MILES IN ADVANCE OF THE PROJECT LIMITS.
- ② THE MESSAGE AND SIZE OF THE WORK ZONE PUBLIC INFORMATION SIGN SHALL BE AS SPECIFIED BY THE DEPARTMENT.
- ③ THE MESSAGE BOARD WILL BE USED TO DISPLAY STATUS OF LANES WITHIN THE PROJECT. THE PRIMARY MESSAGES SHALL BE:
"RIGHT LANE CLOSED" / "X MILES AHEAD"
"LEFT LANE CLOSED" / "X MILES AHEAD"
"ALL LANES OPEN"
- ④ THREE, TYPE II BARRICADES, DURMS, OR VERTICAL BARRICADES AT 50' CENTERS.

GENERAL NOTES

THE FIRST TWO SIGNS AND THE MESSAGE BOARD ARE STATIONARY.

THE LAST FOUR SIGNS SHALL BE MOVED AS NECESSARY TO MAINTAIN THE REQUIRED DISTANCE FROM THE START OF THE LANE SHIFT TAPERS.

HANSON
 Hanson Professional Services Inc.
 1525 South Sixth Street
 Springfield, Illinois 62703-2886
 Offices Nationwide

MODEL NAME = App. Const. Signing
 PLOT DATE = 10/23/2009
 PLOT SCALE = 50/0000
 USER NAME = JohnM200944

LAYOUT	MEW	8/27/05
DRAWN	MEW	8/27/05
REVIEWED	MTM	10/1/07

REVISIONS	
NAME	DATE

ILLINOIS DEPARTMENT OF TRANSPORTATION

**MAINTENANCE OF TRAFFIC
 APPROACH TO CONSTRUCTION
 F.A.I. 80 DETAIL**

SCALE: VERT. N/A
 HORIZ. N/A

DATE: _____ DRAWN BY MEW
 CHECKED BY _____